

Fine Jewellery, Watches & Silver, 17th Dec, 2025 09:30

- 1 Of hunting interest - a late Victorian diamond-set hound and fox jabot pin, designed as a hound chasing after a fox, encrusted with rose-cut diamond points and ruby as the eye, unmarked metal surface testing as silver on 14ct, 8.0 cm in length, 4.9 grams.
Please note: Unless otherwise stated, lots have been tested using an electronic tester. This is a surface test only and is not a guarantee of metal purity. **£500-700**



- 2 An old brilliant-cut diamond and opal dress ring, centred with an oval old-cut diamond with an approximate weight of 0.30ct, in millgrained collet flanked by two precious opal oval cabochons, between trifurcated shoulders leading to shank in yellow metal stamped '18ct', ring head 1.4 x 0.9 cm, size R½, 2.8 grams. **£300-500**



- 3 A gem-set lavalier necklace, set with seed pearls and garnet-topped doublets, in a yellow metal mount to a trace link chain with a hook clasp, surface tested as 9ct gold; 3.8 grams.
Please note: Unless otherwise stated, lots have been tested using an electronic tester. This is a surface test only and is not a guarantee of metal purity. **£250-350**



- 4 An Early to Mid-19th century gem-set brooch, of floral design; the openwork surround with stylised foliate and flowerheads, set with rose-cut diamond points, highlighted with two pear-cut pink paste in cut-down mounts, brooch fittings to the reverse with replacement clasp, unmarked metal testing as silver on 14ct, 4.5 cm wide, 7.5 grams.
Please note: Unless otherwise stated, lots have been tested using an electronic tester. This is a surface test only and is not a guarantee of metal purity. **£200-300**



- 5 A pair of rose-cut diamond cluster drop earrings; the closed-back teardrop pendants with a cluster of rose-cut diamonds, claw-set within a frame of graduated rose-cut diamonds, on a later-added surmount featuring a rose-cut diamond in buttercup mount, ear post and butterfly fittings, unmarked yellow metal surface testing as 18ct, 3.5 cm drop, 11.4 grams.
Please note: Unless otherwise stated, lots have been tested using an electronic tester. This is a surface test only and is not a guarantee of metal purity. **£600-800**



Fine Jewellery, Watches & Silver, 17th Dec, 2025 09:30

- 6 An Edwardian demantoid garnet and diamond bar brooch; centred with collet-set old-cut diamonds, between a bypassing scrollwork mount set with graduated circular-cut demantoid garnets, brooch fittings to the back, unmarked yellow metal testing as 14ct, 3.4 cm wide, 3.0 grams.
Please note: Unless otherwise stated, lots have been tested using an electronic tester. This is a surface test only and is not a guarantee of metal purity. **£200-300**



- 7 A Victorian gem-set fox stick pin, composed of a fox's head set with rose-cut diamonds, with ruby cabochon eyes, in bicolour metal, leading to a yellow metal pin surface tested as 18ct, in a fitted box; 1.3 grams
Please note: Unless otherwise stated, lots have been tested using an electronic tester. This is a surface test only and is not a guarantee of metal purity. **£200-300**



- 8 A ruby and diamond panel ring, the square ring head set with five round brilliant-cut diamonds, and four square table-cut rubies, in pierced floral gallery, between tapered shoulders to a D-profile shank, yellow metal stamped '18ct', ring head 1.2 cm wide, size O, 2.8 grams. **£200-300**



- 9 A Victorian seed pearl brooch in 15ct yellow gold, of floral design, the elongated navette-shaped mount centred with a row of graduated split pearls, surround adorned with flower details, and a twisted rope border, brooch fittings to the back with replacement pin, rubbed British assay marks, 4.4 cm wide, 5.6 grams. **£150-200**



- 10 Two rings; comprising an early 20th century sapphire and diamond-set ring, in a bi-colour metal mount marked '18ct and Plat', size K1/2, together with another early 20th century diamond-set ring, with one stone deficit, in an 18ct gold mount, hallmarked Birmingham, 1915, size O1/2; 3.7 grams (2) **£200-300**



Fine Jewellery, Watches & Silver, 17th Dec, 2025 09:30

- 11 A Victorian diamond-set arrow stick pin, the angled fletching encrusted with graduated rose-cut diamonds, set to a tapering pin, unmarked metal testing as silver on 9ct, 7.5 cm long, 2.6 grams.
Please note: Unless otherwise stated, lots have been tested using an electronic tester. This is a surface test only and is not a guarantee of metal purity. **£200-300**



- 12 An Edwardian amethyst and diamond lavalier necklace and a pair of earrings; the pendant of floral design, comprising a pale octagonal-cut amethyst of 15.2 x 12.4 x 8.5 mm, in claw setting with diamond accents to the cardinal points, to a conforming surmount set with a rock crystal, 4.8 cm drop length, on a 52.0 cm long fine cable link chain; together with a pair of step-cut amethyst drop earrings, measuring 14.1 x 10.3 mm, hook fittings; unmarked white metal testing as silver; total weight of items 12.3 grams. (2)
Please note: Unless otherwise stated, lots have been tested using an electronic tester. This is a surface test only and is not a guarantee of metal purity. **£200-400**



- 13 A ruby and diamond-set openwork navette brooch, composed of a row of alternating ruby and rose-cut diamonds (with four later-added synthetic rubies), of navette form, in cut-down white metal mounts, with two additional rubies set to the inside of the ruby and diamond border, the round cabochon ruby and the marquise-shaped ruby in millegrained collet settings, brooch measuring 4.6cm x 2.6cm, with pin and C clasp fitting, pin stamped with Austrian Heron head mark indicating gold and silver, the pin fitting surface testing as 18ct, 5.0 grams
Please note: Unless otherwise stated, lots have been tested using an electronic tester. This is a surface test only and is not a guarantee of metal purity. **£500-700**



- 14 An opal and diamond-set half hoop ring, set with three precious opal cabochons, set between single-cut diamonds, in a yellow metal mount marked '18ct', size L; 4.7 grams **£300-500**



- 15 An early 19th century mourning ring, with plaited hair behind the central glass compartment, engraved to the interior: 'John Hinsum, 26 May, 1802, At 60', in a rose metal mount, surface tested as 9ct, size Q, together with a Victorian onyx and seed pearl oval brooch, in yellow metal marked '9ct'; 7.0 grams (2)
Please note: Unless otherwise stated, lots have been tested using an electronic tester. This is a surface test only and is not a guarantee of metal purity. **£200-300**



Fine Jewellery, Watches & Silver, 17th Dec, 2025 09:30

- 16 A five-stone sapphire ring, comprising three grain-set blue oval-cut sapphires interspersed with two grain-set oval-cut pink sapphires, in yellow metal surface testing as 18ct, size P, 6.0 grams.
Please note: Unless otherwise stated, lots have been tested using an electronic tester. This is a surface test only and is not a guarantee of metal purity. **£400-600**



- 17 An Edwardian amethyst-set pendant, claw-set with two oval-cut amethysts, in a yellow metal mount of scrolling and floral design, marked '9ct', to a base metal chain; total weighable: 1.4 grams **£80-120**



- 18 An opal-set half hoop ring; set with five precious opal cabochons, of graduated sizes, each displaying vivid play of colour on a light ground, accented with small polki diamonds, with one diamond deficit, the gallery of scroll design leading to an unmarked yellow metal shank, surface tested as 9ct, size O1/2; 2.3 grams
Please note: Unless otherwise stated, lots have been tested using an electronic tester. This is a surface test only and is not a guarantee of metal purity. **£200-400**



- 19 An opal-set pendant, composed of an oval-shaped precious opal cabochon, displaying strong spectral play of colour to a white background, measuring approximately 14mm x 9mm, in a bezel setting with millegrain detailing, accented by bezel-set old-cut diamonds at cardinal points, in an unmarked bi-colour metal mount surface tested as 18ct, to an 18ct yellow gold flat curb link chain, measuring approximately 45.5cm; 6.1 grams
Please note: Unless otherwise stated, lots have been tested using an electronic tester. This is a surface test only and is not a guarantee of metal purity. **£300-500**



- 20 A shell cameo brooch, depicting Nyx, the Goddess of the Night, carrying her children along with an owl, in a conforming mount surface testing as 14ct, with later-added brooch fittings, 4.3 x 3.5 cm, 10.2 grams.
Please note: Unless otherwise stated, lots have been tested using an electronic tester. This is a surface test only and is not a guarantee of metal purity. **£200-300**



Fine Jewellery, Watches & Silver, 17th Dec, 2025 09:30

- 21 A diamond, pearl and coral half-hoop ring, centred with a round brilliant-cut diamond, flanked by two split pearls and two corallium rubrum cabochons, in a scrolled mount leading to a D-profile shank, in yellow metal stamped '18ct', size L, 2.2 grams.
Diamond has been replaced **£200-300**



- 22 A pair of diamond-set floral earrings, with a central old-cut diamond, each with an estimated carat weight of 0.42ct, surrounded by nine smaller old-cut diamonds, with millegrain detailing, in bi-colour metal mounts, with later added post fittings hallmarked 18ct gold; 3.4 grams **£500-800**



- 23 A late Victorian diamond and ruby brooch, of scrolled foliate design, the openwork mount encrusted with old-cut diamonds and rose-cut diamond points, centred with a cushion-cut ruby in collet with twisted cable edge, measures 6.7 x 4.7 mm, unmarked metal surface testing as silver on 18ct, 4.6 x 2.7 cm, 12.9 grams.
Please note: Unless otherwise stated, lots have been tested using an electronic tester. This is a surface test only and is not a guarantee of metal purity. **£600-800**



- 24 An enamel and diamond Gypsy ring, the central old-cut diamond with an estimated weight of 0.40ct, bead-set to a square mount on a black enamel ground, yellow metal stamped '18', size M, 6.0 grams. **£600-800**



- 25 A hardstone cameo reliquary, the ferruginous quartz (or rhyolite?) relief-carved with the portrait of Jesus, set in an oval frame, intercardinal points adorned with brilliant-cut diamond accents, base deficient, unmarked yellow metal surface testing as 18ct, 4.4 x 3.6 cm, 32.7 grams.
Please note: Unless otherwise stated, lots have been tested using an electronic tester. This is a surface test only and is not a guarantee of metal purity. **£600-1,000**



Fine Jewellery, Watches & Silver, 17th Dec, 2025 09:30

- 26 Two bracelets and a loose charm; comprising a charm bracelet with nine charms on engraved navette links, in yellow metal stamped '585', 19.5 cm; a 9ct gold double curb link chain with heart-shaped padlock clasp, 18.0 cm long; and a loose Mezuzah charm stamped '14K'; total weight of items 13.6 grams. (3) **£300-500**



- 27 Two brooches; comprising an aquamarine and split pearl wreath-style brooch, with millegrain detailing, in a white metal mount marked '9ct', with brooch pin fitting to the reverse, together with a white enamel oval locket, with glass compartment, the glass mount tested as base metal, the border in yellow metal surface tested as 18ct; 17.8 grams (2) Please note: Unless otherwise stated, lots have been tested using an electronic tester. This is a surface test only and is not a guarantee of metal purity. **£300-500**



- 28 An emerald and diamond dress ring; centred with a square-cut emerald of 2.5 mm, within a scalloped frame surround set with single-cut diamonds, between trifurcated shoulders to D-profile shank marked '18ct', ring head measures 1.0 cm wide, size V, 3.8 grams. **£300-500**



- 29 A group of gem-set stick pins; to include an example of an old-cut diamond in buttercup mount, one set with moss agate, another one with rose-cut diamond point, together with a 9ct yellow gold tie clip; total weighable 11.6 grams. **£150-250**



- 30 A five-stone diamond ring, comprising five graduating old-cut diamonds, the stones collet-set, the setting further highlighted with rose-cut diamonds, to a yellow metal ring shank of D-profile, marked '585', size P 1/2, 4.0 grams. **£250-350**



Fine Jewellery, Watches & Silver, 17th Dec, 2025 09:30

- 31 Three signet rings; the first set with an oval bloodstone plaque of 15.3 x 11.5 mm, and another similar example set with a rounded oblong bloodstone plaque of 11.8 x 10.00 mm, both in yellow gold with British hallmarks for 9ct, ring sizes U 1/2 and P, combined weight of 14.4 g; together with a ring set with a shield-shaped carnelian of 13 x 10.7mm, to a reeded band (broken) in yellow metal surface testing as 14ct, size N approx, weight 4.7 grams.

Please note: Unless otherwise stated, lots have been tested using an electronic tester. This is a surface test only and is not a guarantee of metal purity. **£300-500**



- 32 A turquoise and diamond cluster ring, centred with an oval turquoise cabochon in collet, encircled by ten old-cut diamonds, between grooved shoulders to D-profile shank, unmarked metal testing as 18ct, ring head 1.4 x 1.1 cm, size J, 4.2 grams.

Please note: Unless otherwise stated, lots have been tested using an electronic tester. This is a surface test only and is not a guarantee of metal purity. **£200-300**



- 33 A hinged bracelet set with black star sapphires; the openwork scrolled mount with twisted rope border and beaded accents, set with three graduated oval black star sapphire cabochons, fastens with a tongue clasp with push-in thumbpiece, in yellow metal stamped '14K', cased in box signed 'Tak Heng Jewellery', inner diameter 5.5 cm, 19.8 grams. **£800-1,200**



- 34 An opal dress ring, claw-set with a precious opal cabochon of 11.0 x 8.7 mm in a closed-back mount, between tapered shoulders, in yellow metal stamped '14K', size L, 2.3 grams. **£200-300**



- 35 A panther link bracelet with padlock clasp, comprising nine rows of panther links, with textured decorations and slightly curved details, fastens with a heart-shaped padlock clasp with engraved floral scrollwork, marked '9ct', overall length 20.0 cm, 9.6 grams. **£200-300**



Fine Jewellery, Watches & Silver, 17th Dec, 2025 09:30

- 36 A sapphire and diamond cluster ring in 18ct, centred with an oval-cut sapphire of 6.7 x 4.6 x 3.2mm, encompassed by ten round brilliant-cut diamonds with an estimated total weight of 0.57ct, between foliate shoulders, ring head 1.3 x 1.1 cm, size L, 3.8 grams. **£600-800**



- 37 Three rings; comprising a diamond-set five-stone ring, with five graduated single-cut diamonds, in a yellow metal mount marked '18ct', size O, a sapphire and diamond-set half hoop ring, in a 9ct yellow gold mount, size O, and a paste and diamond-set ring, in a yellow metal mount marked '18ct', size M; 5.1 grams **£250-350**



- 38 A pair of Edwardian carved chalcedony cufflinks, of square form, carved with reeded design, centred with an old European-cut diamond in millgrained collet, estimated total weight 0.16ct for the pair, chain fittings in yellow metal marked '18ct PL', 1.1 cm wide, in an Asprey case, 6.8 grams. **£300-500**



- 39 An early 20th-century diamond-set plaque ring; composed of three central bezel-set old-cut diamonds, the largest measuring approximately 6.1mm with an estimated carat weight of 0.85ct, flanked by two old-cut diamonds measuring approximately 3mm each, in a diamond-set plaque, with chenier shoulders leading to a white metal shank marked 'Plat', size Q; 5.0 grams **£800-1,200**



- 40 A pair of mother-of-pearl cufflinks, of circular form, each set with an engraved mother-of-pearl panel, centred with a split pearl accent, within a white enamelled frame, in yellow metal surface testing as 14ct, panel measures 1.3 cm across, 4.1 grams.
Please note: Unless otherwise stated, lots have been tested using an electronic tester. This is a surface test only and is not a guarantee of metal purity. **£100-150**



Fine Jewellery, Watches & Silver, 17th Dec, 2025 09:30

- 41 A diamond-set fox brooch, sculpted as a running fox, fully encrusted with single-cut diamonds, with a ruby cabochon as eye, later brooch fittings to the reverse, unmarked white metal surface testing as 18ct, 4.0 cm wide, 4.1 grams.
Please note: Unless otherwise stated, lots have been tested using an electronic tester. This is a surface test only and is not a guarantee of metal purity. **£300-500**



- 42 An Art Deco style panel ring, centrally-set with a bezel-set round brilliant diamond, within a diamond-set openwork panel, to a white metal shank marked 'plat', size N; 3.3 grams. **£600-800**



- 43 Krementz - a pair of rock crystal and split pearl cufflinks; the round and frosted rock crystal panels with carved radiating patterns, in a millgrained frame with foliate and black enamel details, centred with an applied split pearl, bar link connections stamped '14K' with the maker's mark of Krementz & Co., 1.5 cm wide for each panel, in a Collingwood of Conduit Street case, 10.0 grams. **£300-500**



- 44 A late Art Deco diamond solitaire ring, centred with an Old-European cut diamond of 5.6 mm, estimated weight 0.70ct, in a buttercup mount between foliate shoulders, white metal stamped '18ct PLAT', size M½, 3.4 grams. **£300-500**



- 45 A double-row natural saltwater pearl necklace, comprising two strands of off-round pearls, with an average 3.5 mm in diameter, hand-knotted to a box clasp encrusted with split pearls, unmarked pink coloured metal surface testing as 14ct, overall length 38.5 cm, 13.2 grams.
Together with a GCS verbal report stating the pearl to be natural saltwater, numbered 5786-0166.
Please note: Unless otherwise stated, lots have been tested using an electronic tester. This is a surface test only and is not a guarantee of metal purity. **£700-900**



Fine Jewellery, Watches & Silver, 17th Dec, 2025 09:30

- 46 A sapphire and diamond cluster ring; the oval mixed-cut sapphire claw mounted within a border of fourteen round brilliant cut diamonds, with two calibr  cut sapphires to each shoulder. Plain D-shaped shank, unmarked, shank surface testing as 14ct and mount surface testing as 18ct. Sapphire is estimated to weigh 2.66 carats. 9.4 x 7.5 x 4.5mm, 3.46 grams. Please note: Unless otherwise stated, lots have been tested using an electronic tester. This is a surface test only and is not a guarantee of metal purity. ** 1,500-2,500**



- 47 A diamond solitaire ring, the central diamond measuring approximately 7.5mm, with an estimated carat weight of 1.70ct, flanked by two bezel-set baguette-cut diamonds, in a bi-colour metal mount marked '18ct', size L; 3.8 grams. ** 1,500-2,500**



- 48 A French Belle  poque old-cut diamond lavalier necklace, with an estimated total diamond weight of 2.50ct, consisting of a pear-shaped old-cut diamond in claw-setting, suspending from a tapered and articulated bar with millgrain details set with a row of graduated single-cut diamonds, to an old European-cut diamond surmount, 3.8 cm drop, on a 43.0 cm long Figaro link chain, unmarked white metal surface testing as platinum, 5.7 grams. Please note: Unless otherwise stated, lots have been tested using an electronic tester. This is a surface test only and is not a guarantee of metal purity. ** 3,000-5,000**



- 49 An Art Deco sapphire and diamond-set brooch, of architectural design; the rounded rectangular openwork frame centrally-set with three old-cut diamonds, with millegrain bezel surround, the largest diamond measuring approximately 4.5mm, within a navette-shaped openwork surround, set with old-cut diamonds and calibre-cut sapphires, each corner set with additional rows of calibre-cut sapphires, in a white metal mount, with brooch fitting to the reverse, the pin stem with a partially rubbed French dog's head mark indicating platinum and partially rubbed maker's mark, measuring approximately 49mm x 22mm; 10.4 grams. ** 3,000-5,000**



- 50 A sapphire and diamond panel ring, centred with an oval-cut sapphire of 6.8 x 6.2 x 3.8mm, in a millgrained pierced mount encrusted with single-cut diamonds with calibre-cut sapphire corners, white metal surface testing as platinum, ring head 1.5 x 1.2 cm, size M  , 5.9 grams. Please note: Unless otherwise stated, lots have been tested using an electronic tester. This is a surface test only and is not a guarantee of metal purity. ** 1,000-1,500**



Fine Jewellery, Watches & Silver, 17th Dec, 2025 09:30

- 51 A diamond-set ring, composed of an old European cut diamond in a six-prong setting, measuring approximately 5.7mm with an estimated carat weight of 0.70ct, flanked by two tapered baguette-cut diamonds, to an 18ct white gold mount, size L; 2.5 grams **£500-700**



- 52 A diamond-set solitaire ring, composed of an illusion-set round brilliant cut diamond, measuring approximately 4.5mm, with an estimated carat weight of 0.36ct, the high gallery leading to foliate-style shoulders, to a white metal shank marked '18ct', size M1/2; 3.6 grams. **£300-500**



- 53 Asprey - a pair of sapphire and mother-of-pearl cufflinks, the octagonal-shaped cufflinks centred with a bezel-set sapphire, to a mother-of-pearl plaque with reeded border, with chain connectors, hallmarked 18ct gold, Birmingham, 1989, with maker's marks for Deakin & Francis; 8.5 grams. **£400-600**



- 54 A matched gold, mother-of-pearl and sapphire dress set, in fitted case; together with a pair of silver, mother-of-pearl and enamel cufflinks, adapted from buttons, with later links; two sets of six gilt metal and enamel buttons in fitted cases, circa 1910; and a small quantity of further cufflinks and buttons (some a/f). **£200-300**



- 55 A mottled dark green nephrite jade panel brooch, the oval plaque carved with a sinuous dragon in cloud scrolls, in a plain 9ct yellow gold brooch frame, hallmarked for London 1975, 45mm x 33mm, 13.3g gross. **£200-400**



Fine Jewellery, Watches & Silver, 17th Dec, 2025 09:30

- 56 A gem-set floral necklace, composed of round-cut citrines and cultured pearls, set between foliate and scrolling links, to a single suspended oval-cut citrine, with a twist yellow metal chain and bolt ring clasp marked '9ct'; 16.0 grams. **£300-500**



- 57 A pearl-set spray brooch, the stylised flowerheads with a sandblast finish, mounted with a potato-shaped cultured pearl of 7.4 mm, stem finial flush-set with a round brilliant-cut diamond accent, brooch fittings to the reverse, yellow metal stamped '750', 5.5 cm wide, 8.8 grams. **£500-700**



- 58 A pair of Etruscan-style cufflinks, of hollow scroll holder form, with twisted cable and granulated details, accentuated with a line of navy enamel at the centre, toggle fittings with personal inscription, in yellow metal stamped 'K18', 2.8 cm wide, 18.5 grams. **£800-1,200**



- 59 A lion statant brooch, realistically sculpted with fur texture, adorned with a round brilliant-cut diamond by one of its paws and eyes highlighted with rubies; brooch fittings to the reverse; yellow metal stamped '18K'; 5.5 cm wide; 19.6 grams. **£1,500-2,000**



- 60 Lalaounis - a pair of lion head cufflinks, of dumbbell form, the bar terminated with a sculpted lion head on both ends, in yellow metal stamped '750', with Lalaounis maker's mark, 3.5 cm, 18.4 grams. **£1,200-1,800**



Fine Jewellery, Watches & Silver, 17th Dec, 2025 09:30

- 61 An emerald and diamond parure; comprising a necklace, a bracelet, a pair of earrings and a cocktail ring; of textured and braided design, embellished with lines of graduated circular-cut emeralds, and round brilliant-cut diamond clusters; the collar necklace consisting of graduated hinged links, and a series of links with beaded rivets, completed with a box clasp, overall length 42.5 cm; the conforming link bracelet measures 18.0 cm long; earrings with ear post and clip fittings drop length 3.0 cm; ring size L; all items in yellow metal marked '20K', with the necklace clasp stamped 'Italy 18K', total weight of items 137.3 grams.
In a London Hilton Jewellers (now Moussaieff) fitted case.
£7,000-9,000



- 62 Attributed to Paul Flato - A gem-set slipper fur clip, in the form of a babouche with pom pom, the shoe bead-set with circular-cut rubies throughout with a rose-cut diamond border, with a pom pom centred with a rose-cut diamond and circular-cut sapphires, double prong clip fitting to the back, yellow metal marked '18', 3.6 x 1.7 cm, in a Harrods London case, 5.5 grams. **£1,800-2,200**



- 63 Grima - a diamond-set bombe ring, of ribbed design, embellished with four rows of single-cut diamonds, leading to a tapering shank, yellow metal marked '18K', size Q, 8.0 grams. Unsigned. This is a bespoke piece made alongside a band ring, which was signed by Grima and not being offered into sale. Although this piece is not signed, we have a copy of email correspondence with Grima authenticating this ring.
£800-1,200



- 64 Gucci- a lapis lazuli cross-over ring in 9ct yellow gold, featuring two spherical lapis lazuli bead finials of 8.0 mm, mounted to the tapered bypass shoulders, leading to a D-profile shank, London 1976, sponsor's mark 'FJLd', size E, in original Gucci ring box, 6.0 grams.
Brand signature has been rubbed and partially removed due to resizing. **£300-500**



- 65 A Modernist diamond-set cocktail ring in the form of a textured foliate, the stylised and layered foliate mount claw-set with five old-cut diamonds, with an estimated total weight of 1.18ct, in unmarked yellow metal surface testing as 14ct, ring head 2.7 x 2.0 cm, size P, 14.0 grams.
Please note: Unless otherwise stated, lots have been tested using an electronic tester. This is a surface test only and is not a guarantee of metal purity. **£800-1,200**



Fine Jewellery, Watches & Silver, 17th Dec, 2025 09:30

- 66 A Modernist diamond-set floral pendant on chain, by Cropp & Farr, the applied foliate motif centred with a round brilliant-cut diamond cluster, with leaves adorned with single-cut diamonds, on a stylised bow mount with beaded textures, London 1973, 5.0 cm drop; integral bail suspending from a 45.0 cm long braided ball link chain in yellow metal, bearing Italian assay marks for 18ct; 26.0 grams. **£1,500-2,000**



- 67 A floral brooch set with diamonds and enamel, comprising two stylised flowerheads with textured petals, embellished with blue and green transparent enamel, stamens claw-set with round brilliant-cut diamonds, with an estimated total weight of 0.85ct, brooch fittings to verso, yellow metal stamped '18K KI', 5.8 x 4.0 cm, 27.4 grams. **£1,500-2,000**



- 68 A ruby-set dress ring, featuring a central raised domed cluster of nineteen claw-set round-cut rubies, the domed cluster tapering to a border detailed with diagonal fluting, the diagonal fluting extending to the shoulders, to a plain yellow metal band surface testing as 18ct, ring head measuring 16.0mm x 16.0mm x 12.0mm, size K, 7.03 grams. Please note: Unless otherwise stated, lots have been tested using an electronic tester. This is a surface test only and is not a guarantee of metal purity. **£300-500**



- 69 A two-tone dress ring in 18ct gold, of diagonally fluted design, bearing British import marks, size N, 8.8 grams. **£700-900**



- 70 An angelskin coral and diamond dress ring, centred with a button-shaped corallium secundum of 12.6 mm, between bow shoulders adorned with two old-cut diamonds in millgrained collets, with an estimated total weight of 0.28ct, yellow metal stamped '18K', signed 'FLUHLER', size L, 17.0 grams. **£400-600**



Fine Jewellery, Watches & Silver, 17th Dec, 2025 09:30

- 71 A diamond solitaire ring, of Modernist-style crossover design, composed of a round brilliant diamond measuring approximately 7.25mm with an estimated carat weight of 1.49ct, in a six-prong setting, to a crossover mount, with textured design, hallmarked 18ct gold, London, 2007, size P; 7.0 grams **£800-1,200**



- 72 A gem-set bracelet of floral design, centred with a stylised flowerhead set with circular-cut sapphires and diamond accents, to a woven chain of wickerwork pattern, completed with a concealed lever clasp, centrepiece stamped '800 and 585', chain bearing British assay marks for 9ct gold, overall length 17.5 cm, 40.0 grams. **£600-800**



- 73 A jadeite ring, the oval jadeite cabochon centrally set in a four-prong setting, with textured surround featuring bead detailing, to a flat-shaped shank in yellow metal marked '14K', size P; 5.7 grams **£200-300**



- 74 A cultured pearl and turquoise-set dress ring, the cultured pearl surrounded by round turquoise cabochons, with a filigree surround of floral design, to a multi-wire yellow metal shank, with Arabic marks for 18ct, size N; 6.4 grams **£200-300**

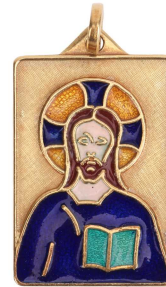


- 75 Two pairs of earrings; to include a pair of tassel earrings with cultured pearl drops, on fine serpent links to a beaded surmount with peg and butterfly fittings, in yellow metal stamped '14K', 3.5 cm drop; and another pair of stud earrings of trefoil design, each set with three glass spherical beads, in yellow metal surface testing as 14ct; total weight of items 5.2 grams. (2)
Please note: Unless otherwise stated, lots have been tested using an electronic tester. This is a surface test only and is not a guarantee of metal purity. **£100-200**



Fine Jewellery, Watches & Silver, 17th Dec, 2025 09:30

- 76 An enamel religious pendant; the rectangular pendant with Florentine finish, depicting a Medieval-style Jesus, set with polychromatic champleve enamel, suspended from a loop bail, in yellow metal bearing Italian assay marks '750', and maker's mark for Tradizione Orafa srl, 3.3 cm drop, 6.2 grams. **£300-500**



- 77 A Modernist ring; the rectangular ring head consisting of textured grooves in a wave design, to a tapering flat shank, in yellow metal marked '18ct', ring size T, ring head measures 1.6 x 0.9 cm, total weight of item 8.58 grams. **£500-800**



- 78 A large synthetic spinel dress ring; set with a round synthetic spinel in pale blue, claw set to a yellow metal mount with floral motif shoulders, to a tapered D-profile shank, marked as '14k', ring head measures 1.9 cm across, ring size M½, total weight of item 9.7 grams. **£200-300**



- 79 A large smoky quartz pendant cum brooch, containing a large oval-cut smoky quartz of 3.5 x 2.5 cm, claw-set to an oval surround with coiled edge, hinged bail and brooch fittings to the reverse, unmarked pinkish-yellow metal surface testing as 14ct, 5.0 cm wide, 37.2 grams.
Please note: Unless otherwise stated, lots have been tested using an electronic tester. This is a surface test only and is not a guarantee of metal purity. **£500-700**



- 80 A tri-coloured braided necklace, consisting of three intertwined herringbone chains with patterned textures, completed with a lobster clasp, Italian marks for 18ct, overall length 42.0 cm, 12.4 grams. **£500-700**



Fine Jewellery, Watches & Silver, 17th Dec, 2025 09:30

- 81 A braided ring in 18ct yellow gold, of woven design leading to tapering shank, London 1919, size S½, 5.4 grams. **£150-250**



- 82 A pair of double knot earrings, measuring approximately 22mm x 16mm, with post fittings and ear clips to the reverse, with Italian marks for 18ct; 18.9 grams **£800-1,200**



- 83 A tiger's eye pinky ring, featuring a large tiger's eye high dome cabochon, measuring 20.7 x 16.6 x 10.3 mm, in a collet to a wide tapering flat shank, yellow metal marked 'K14', size E, 12.8 grams. **£400-600**



- 84 A tiger's eye necklace and a bracelet; the necklace comprising a hinged tiger's eye pendant carved as a twisted horn, with applied stripe decorations, on a fine cable link chain with spring-ring clasp, in yellow metal struck with Italian assay marks for 18ct, 41.0 cm, 8.7 grams; together with a carved tiger's eye link bracelet, alternating with gilt twisted cable links, 19.5 cm long. (2) **£300-500**



- 85 A Modernist abstract ring, the rectangular ring head comprises geometrical designs on a textured ground, to tapering flat shank, yellow metal marked '18ct OBLO', ring size X, ring head measures 1.2 x 1.6 cm, total weight of item 13.31 grams. **£600-800**



Fine Jewellery, Watches & Silver, 17th Dec, 2025 09:30

- 86 A gem-set enamel heart pendant on chain, the heart-shaped pendant with red transparent enamel and embellished with star motifs, edged with a frame of round turquoise cabochons, 3.1 cm drop, with loop bail suspending on a 53.0 cm long knife-edged cable link chain, all set in 9ct yellow gold, British assay marks, 1959, 9.9 grams. **£200-300**



- 87 A pair of turquoise-set earrings, with irregular-shaped polished turquoise, bezel-set in yellow metal mounts, with ear clips to the reverse, surface tested as 9ct; 6.5 grams
Please note: Unless otherwise stated, lots have been tested using an electronic tester. This is a surface test only and is not a guarantee of metal purity. **£100-150**



- 88 A synthetic orange sapphire ring, with an emerald-cut synthetic sapphire in reddish-orange colour, double claw set on a yellow metal mount, floral details on gallery and shoulders, to a D-profile shank, marked '14k', ring size O, total weight of item 4.8 grams. **£200-300**



- 89 A Modernist ring, the quadrilateral ring head is constructed by two submerging stepped squares, carved pattern on shoulders, to tapering flat shank, yellow metal marked '18ct OBLO', ring size Y, ring head measures 1.8 x 1.5 cm, total weight of item 18.0 grams. **£900-1,400**



- 90 A citrine dress ring, claw-set with a rectangular citrine with canted corners, measures 9.9 x 8.0 x 4.9 mm, to a D-profile shank in yellow metal stamped '18ct' also surface testing as 18ct, size H, 4.8 grams.
Please note: Unless otherwise stated, lots have been tested using an electronic tester. This is a surface test only and is not a guarantee of metal purity. **£250-350**

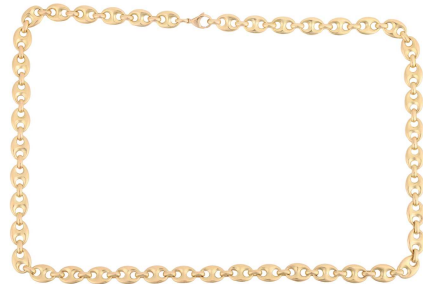


Fine Jewellery, Watches & Silver, 17th Dec, 2025 09:30

- 91 A pair of ruby-set cufflinks, of polished disc form, each centred with an applied round ruby cabochon, toggle fittings to the back, yellow metal stamped '750', signed Serkos and in respective branded case, 1.6 cm wide, 12.5 grams. **£600-800**



- 92 A long heavy anchor link chain, fastened with lobster clasp, marked as '750', link width 8.8 mm, overall measuring 61.0 cm in length, total weight of item: 97.68 grams. **£5,000-8,000**



- 93 A pair of triangular cufflinks of reeded design, fitted with swivel backs, unmarked yellow metal surface testing as 18ct, cufflink motif measures 2.4 cm across, total weight of item 46.85 grams.
Please note: Unless otherwise stated, lots have been tested using an electronic tester. This is a surface test only and is not a guarantee of metal purity. **£2,000-3,000**



- 94 A ruby and diamond line bracelet, comprising a series of oval-cut rubies in articulated claw mounts, flanked by single-cut diamond accents, concealed tongue clasp, yellow metal stamped '14K', overall length 18.0 cm, 7.7 grams. **£400-600**



- 95 An amethyst trilogy ring, centred with an oval-cut amethyst flanked by further two pear-cut amethysts, with pierced chevron shoulders to tapering shank, in yellow metal stamped '9K', size K, 2.1 grams. **£200-300**



Fine Jewellery, Watches & Silver, 17th Dec, 2025 09:30

- 96 A small group of rings comprising three matching seven-stone rings, each channel-set with calibre-cut gemstones including rubies, emeralds and sapphires, to yellow metal mounts surface tested as 14ct, size U, together with an interchangeable gem-set outer ring in yellow metal surface tested as 14ct, size U, and two blue enamel stacking rings, with Israeli marks for 14ct gold, size O1/2; 10.2 grams (6)
Please note: Unless otherwise stated, lots have been tested using an electronic tester. This is a surface test only and is not a guarantee of metal purity. **£300-500**



- 97 A large synthetic colour change sapphire pendant, claw-set to a reeded mount, on a tapered bail, unmarked metal surface testing as 9ct, 3.7 cm drop, 9.6 grams.
Please note: Unless otherwise stated, lots have been tested using an electronic tester. This is a surface test only and is not a guarantee of metal purity. **£150-250**



- 98 A pair of oblong cufflinks, with reeded details at the centre, fitted with linked torpedo backs, yellow metal marked '18ct', total weight of items 9.20 grams. **£400-600**



- 99 A small group of jewellery; The first piece a synthetic colour-change sapphire ring, in a six-claw setting, to a yellow metal ring shank surface testing as 18ct, N ½, 6.5 grams; The second a pair of paste and cubic zirconia floral cluster ear studs, to post fittings with butterfly backs, yellow metal surface testing as 9ct, 1.5 grams; The third a pair of diamond and sapphire ear studs, to post fittings and butterfly backs, yellow metal surface testing as 9ct, 1.5 grams. (3).
Please note: Unless otherwise stated, lots have been tested using an electronic tester. This is a surface test only and is not a guarantee of metal purity. **£300-500**



- 100 A signet ring with parallel ridged decoration, to a tapering flat shank stamped '18ct', size Z, 15.53 grams. **£700-900**



Fine Jewellery, Watches & Silver, 17th Dec, 2025 09:30

- 101 A Star of David pendant, with engraved striations, on a suspension loop, hallmark partially rubbed, yellow metal surface testing as 14ct, 2.7 cm wide, 7.1 grams.
Please note: Unless otherwise stated, lots have been tested using an electronic tester. This is a surface test only and is not a guarantee of metal purity. **£200-300**



- 102 A diamond-set half hoop ring, claw-set with seven single-cut diamonds, to a bi-colour metal mount marked '18ct' and 'Plat', size Q; 2.3 grams **£300-500**



- 103 A pair of diamond-set stud earrings, composed of round brilliant diamonds, with an estimated total carat weight of 0.34ct, bezel-set in 18ct white gold mounts, the unassociated white metal earring backs marked '9K' and the other '925'; 2.1 grams **£100-150**



- 104 A diamond-set eternity band, in 18ct white gold, channel-set with round brilliant diamonds, to a flat-shaped band measuring approximately 4.2mm wide, size N; 4.6 grams **£300-500**



- 105 A pair of diamond-set semi-hoop earrings, comprising bezel-set round brilliant diamonds at the surmounts, each with an estimated carat weight of 0.25ct, fixed to a curved row of claw-set diamonds, graduated in size, in 18ct white gold mounts, with post fittings and earring backs to the reverse; 4.6 grams **£300-500**



Fine Jewellery, Watches & Silver, 17th Dec, 2025 09:30

- 106 An Art Deco style diamond-set ring, centrally set with a row of four princess-cut diamonds, flanked by an additional two bezel-set princess-cut diamonds, between two scalloped rows of round brilliant-cut diamonds, to a white metal mount marked '18K' and '750', size N; 5.5 grams **£400-600**



- 107 A pair of jadeite and diamond-set cluster earrings, of foliate design, centrally-set with a round jadeite cabochon, surrounded by round brilliant diamonds, in an unmarked white metal mount, surface tested as 18ct, with post fittings to the reverse and butterfly backs; 6.5 grams
Please note: Unless otherwise stated, lots have been tested using an electronic tester. This is a surface test only and is not a guarantee of metal purity. **£300-500**



- 108 A diamond-set fringe-style necklace, composed of diamond-set openwork links with millegrain detailing, connected with round brilliant diamonds measuring between 3.2mm to 4mm each, suspending six diamond-set floral cluster drops and a larger removable diamond-set floral cluster pendant, the removable pendant with an estimated total diamond carat weight of 1.50ct, the openwork links leading to a white metal flat panther link chain, with push bar clasp and safety catch, marked '750', 29.9 grams **£1,500-2,000**



- 109 A diamond-set crossover-style ring, featuring a central round brilliant diamond, measuring approximately 9.1mm x 5.2mm, with an estimated carat weight of 3.00ct and an estimated colour and clarity grade of J/K and I2, the crossover-style shoulders each claw-set with seven graduated round brilliant diamonds, to a white metal mount surface tested as platinum, size M; 7.3 grams
Please note: Unless otherwise stated, lots have been tested using an electronic tester. This is a surface test only and is not a guarantee of metal purity. **£2,500-3,000**



- 110 A diamond line bracelet, comprising fifty-two round brilliant-cut diamonds, each measuring approximately 2.8mm x 1.7mm, with an estimated total carat weight of 4.16ct, each stone in a four claw setting and connected by articulated links, bracelet measuring approximately 18.0cm in length, all in white metal stamped '14K', 12.5 grams. **£2,000-3,000**



Fine Jewellery, Watches & Silver, 17th Dec, 2025 09:30

- 111 A diamond-set toi et moi ring, composed of two round brilliant diamonds, measuring approximately 5.8mm, with an estimated total carat weight of 1.50ct, claw-set in a crossover design, in an 18ct white gold mount, size N1/2; 5.0 grams **£1,000-1,500**



- 112 A diamond-set full eternity ring, grain-set with old-cut diamonds, of various sizes, in an unmarked white metal mount, surface tested as 18ct, size K (measured with beads); 4.7 grams
Please note: Unless otherwise stated, lots have been tested using an electronic tester. This is a surface test only and is not a guarantee of metal purity. **£500-800**



- 113 A diamond-set pendant, of rounded lozenge outline, featuring a central panel of princess-cut diamonds, in an invisible setting, within a pavé-set diamond surround, to a diamond-set bail, in white metal marked '750', measuring approximately 39mm including bail; 6.2 grams **£300-500**



- 114 A diamond-set half-eternity ring, featuring a channel of nineteen round brilliant-cut diamonds, set in platinum, size J, 3.5 grams. **£150-250**



- 115 A pair of diamond-set stud earrings in the form of swirls, centrally adorned with a round brilliant-cut diamond accent, screw-back fittings to reverse, white metal bearing Russian assay marks for 14ct, 1.0 cm wide, 2.0 grams. **£100-200**



Fine Jewellery, Watches & Silver, 17th Dec, 2025 09:30

- 116 A wedding band, of a wide flat shank forged with bark effect texture, rubbed assay marks, white metal surface testing as 14ct, size L½, 6.7 grams.
Please note: Unless otherwise stated, lots have been tested using an electronic tester. This is a surface test only and is not a guarantee of metal purity. **£250-350**



- 117 A sapphire eternity ring, featuring twenty-two square and calibre-cut blue sapphires channel-set in white metal surface testing as platinum (insert to back of ring surface testing as base metal), size P, 3.03 grams.
Please note: Unless otherwise stated, lots have been tested using an electronic tester. This is a surface test only and is not a guarantee of metal purity. **£200-300**



- 118 A pearl and diamond-set cluster ring, composed of cultured pearls of various body colours, each bezel-set with a round brilliant diamond, with attached jump rings connected to a court-shaped 18ct white gold shank, size L; 9.0 grams **£200-300**



- 119 Two 9ct gold pendant charms, including a lighthouse, the interior with a cultured pearl and signed by Litacharm, the second pendant depicting a ballerina in a glass cloche, hallmarked Birmingham 1964; 22.0 grams (2) **£200-300**



- 120 A 9ct gold fancy-link bracelet, comprising a series of interwoven oval links, completed with an integral box clasp and two additional safety catches, 19.5cm in length, 0.8cm in width, 10.5 grams. **£200-300**



Fine Jewellery, Watches & Silver, 17th Dec, 2025 09:30

- 121 Two charms; to include a whistle on a suspension loop, in yellow metal stamped '18', 5.0 grams; and a caravan with spinning wheels, testing as gilt metal. (2)
Please note: Unless otherwise stated, lots have been tested using an electronic tester. This is a surface test only and is not a guarantee of metal purity. **£200-300**



- 122 A 9ct gold charm bracelet, suspending twenty four charms, mostly 9ct gold, but including 14ct and 18ct examples; gross weight: 87.5 grams **£2,400-2,800**



- 123 A group of yellow metal charms, to include a 9ct yellow gold articulated house charm, a 9ct gold violin charm, a 9ct gold articulated shoe charm, a 9ct gold handbag charm, the four weighing 6.5 grams; as well as a teapot and a bean charm, both marked 9ct and weighing 6.0 grams together; additionally, a clam shell, a windmill and a lamp post charm in yellow metal surface testing as 18ct, 14ct and 9ct respectively and weighing 0.75 grams, 2.0 grams and 1.09 grams respectively, along with a gilt-metal fob charm engraved with a floral motif.
Please note: Unless otherwise stated, lots have been tested using an electronic tester. This is a surface test only and is not a guarantee of metal purity. **£300-500**



- 124 A spinner pendant on chain, featuring a stylised spinning top pendant engraved with levels of affection such as 'with all his heart' and 'he loves me not', surface testing as 18ct, the pendant to a yellow metal rope link chain surface testing as 9ct, measuring 67.0cm in length, completed with a spring ring clasp, total weight, 13.0 grams.
Please note: Unless otherwise stated, lots have been tested using an electronic tester. This is a surface test only and is not a guarantee of metal purity. **£250-350**



- 125 Two diamond-set rings; The first a ring grain-set with seven single-cut diamonds, in white metal (may require re-rhodium plating), with chevron border detail, to a plain tapering ring shank marked '750', size L, 2.5 grams; The second a ring grain-set with a single-cut diamond, to shoulders highlighted with engraved lozenge detail, to a white metal band marked '18Kt', size P, 5.0 grams. **£200-300**



Fine Jewellery, Watches & Silver, 17th Dec, 2025 09:30

- 126 A diamond solitaire ring, consisting of a round brilliant-cut diamond with an estimated weight of 0.35ct, mounted in a high-profile claw setting, between tapered shoulders, in unmarked white metal surface testing as 14ct, size J, 3.0 grams.
Please note: Unless otherwise stated, lots have been tested using an electronic tester. This is a surface test only and is not a guarantee of metal purity. **£250-350**



- 127 A signet ring in 18ct yellow gold, with a polished vacant rectangular head, between fluted shoulders leading to a flat shank, British import marks, size U, 6.7 grams. **£400-600**



- 128 A pair of diamond-set drop earrings, of tapering design, each claw-set with thirteen graduated round brilliant diamonds, in 18ct white gold mounts, with post fittings and earring backs to the reverse; 2.6 grams **£300-500**



- 129 An amethyst and diamond dress ring, featuring a central claw-set round mixed-cut amethyst of vivid purple colour, measuring 13.4mm in diameter, encircled by a curved border grain-set with a single row of round brilliant-cut diamonds and an additional three rows of black round brilliant-cut diamonds, the shoulders grain-set with four rows of black round brilliant-cut diamonds, extending to a plain white metal ring shank marked '18K 750', size M, 8.0 grams. **£300-500**



- 130 A diamond-set dress ring, flush-set with a round brilliant-cut diamond with an estimated weight of 0.20ct, to a band with a central indentation, Indian assay marks '750', size P, 10.0 grams. **£800-1,200**



Fine Jewellery, Watches & Silver, 17th Dec, 2025 09:30

- 131 A diamond solitaire ring, composed of a round brilliant-cut diamond, with an estimated carat weight of 0.20ct, in a six-prong setting, with tapered shoulders leading to a D-profile shank, in unmarked yellow metal surface tested as 18ct, size N1/2; 1.9 grams
Please note: Unless otherwise stated, lots have been tested using an electronic tester. This is a surface test only and is not a guarantee of metal purity. **£150-250**



- 132 A black star sapphire ring, claw-set in a four-prong setting, flanked by foliate motifs, in a yellow metal mount marked '14K', size N, together with a pair of black star sapphire drop earrings, the surmount pierced with the Chinese character for 'auspicious', with mismatched earring backs in yellow metal marked '18K' and '14K'; 6.4 grams (2)
Please note: Unless otherwise stated, lots have been tested using an electronic tester. This is a surface test only and is not a guarantee of metal purity. **£200-400**



- 133 A jadeite pendant and matching cocktail ring, the pendant of circular form comprising a pale greenish-grey jade annulet, with scrolled foliate and a temple centrepiece, set with hallow pear-shaped jade cabochons, on a tapering bail, yellow metal stamped '14K', 4.5 cm drop; together with a cocktail ring in a similar design embellished with diamond accents, ring head 2.3 x 2.0 cm, size N; total weight of items 19.6 grams. (2) **£300-500**



- 134 A pair of jade heart drop earrings, each consisting of a carved heart-shaped jadeite, on a flowerhead surmount, chain suspended from an ear post and butterfly fitting, unmarked yellow metal surface testing as 18ct, overall drop length 3.0 cm, 3.2 grams.
Please note: Unless otherwise stated, lots have been tested using an electronic tester. This is a surface test only and is not a guarantee of metal purity. **£200-300**



- 135 A long jadeite link chain, comprising a series of Figaro links, flanked by faceted jadeite bar links with a chamfered edge, suspending a carved jadeite Fuu dog seal with vacant panel, yellow metal surface testing as 14ct, with a gilt suspension loop bail, pendant drop length 3.1 cm, chain overall length 134.0 cm, 39.8 grams.
Please note: Unless otherwise stated, lots have been tested using an electronic tester. This is a surface test only and is not a guarantee of metal purity. **£500-800**



Fine Jewellery, Watches & Silver, 17th Dec, 2025 09:30

- 136 A chrome diopside and garnet cluster ring in 9ct yellow gold, the navette-shaped cluster centred with an oval-cut chrome diopside, framed by a frame of circular-cut garnets and an outer frame of circular-cut diopsides, between tapered shoulders, British hallmarks, signed 'QVC', ring head 2.4 x 2.2 cm, size O, 3.7 grams. **£200-300**



- 137 An emerald line bracelet, comprising fourteen round-cut emeralds, interspersed by stylised cross forms and a white-metal illusion panel, every other white metal panel illusion-set with a rose-cut diamond, measuring 18.0cm in length, completed with an integral box clasp with additional safety catch, in yellow metal, catch stamped '14K', 10.0 grams. **£500-700**



- 138 A large synthetic ruby pendant on chain, featuring a large oval-cut synthetic ruby of 18.0 x 13.5 x 8.5 mm, in a claw setting with tapered bail, yellow metal testing as 9ct, on a 60.0 cm long flat anchor link chain with lobster clasp, pink metal stamped '10K', 9.8 grams.
Please note: Unless otherwise stated, lots have been tested using an electronic tester. This is a surface test only and is not a guarantee of metal purity. **£200-300**



- 139 An emerald dress ring, featuring a deep green coloured emerald with sub-translucent transparency, approximately measuring 11.1 x 12.1 mm, bar set on a yellow metal mount surface tested as 18ct, with trumpeted shoulders to a court profile shank, unmarked, ring size N, total weight of item 10.3 grams. **£800-1,200**



- 140 A gem-set crucifix pendant in 18ct yellow gold, the arms decorated with star-set circular-cut emeralds, on a reeded bail, British assay marks, 7.0cm drop, 14.8 grams. **£700-900**



Fine Jewellery, Watches & Silver, 17th Dec, 2025 09:30

- 141 A multi-gem set bracelet, composed of oval mixed-cut glass-filled rubies, dyed sapphires and emeralds, claw-set in an alternating pattern, in a yellow metal mount with integrated push bar clasp and safety catch, marked '18K', measuring approximately 19.5cm; 15.5 grams **£700-900**



- 142 An agate bead necklace, comprising fourteen spherical dyed agate beads of 16.5mm, capped with graduated cups, completed with a hook clasp with twisted cable details, unmarked yellow metal surface testing as 18ct, overall length 43.0 cm, 99.6 grams.
Please note: Unless otherwise stated, lots have been tested using an electronic tester. This is a surface test only and is not a guarantee of metal purity. **£600-800**



- 143 An angular link bracelet, composed of stylised hexagonal openwork links, each connected by a domed rectangular link with Florentine finish, completed with an integral box clasp and additional safety catch, 16.5cm in length, 1.0cm in width, the clasp marked '585', 17.5 grams. **£500-700**



- 144 A yellow sapphire and diamond-set dress ring, claw-set with a heart-shaped yellow sapphire, to a diamond-set openwork ring, of lattice design, in white metal marked '18K' and '750', size M; 5.8 grams **£400-600**



- 145 A fracture-filled ruby and diamond-set bracelet, claw-set with fracture-filled rubies and round brilliant diamonds, in a yellow metal mount marked '14K', with integrated push bar clasp and safety catch; 12.3 grams **£700-900**



Fine Jewellery, Watches & Silver, 17th Dec, 2025 09:30

- 146 A gem-set floral bracelet, the crossover links with flower motifs, set with round brilliant diamonds and round pink sapphires, in an alternating pattern, to a bi-colour metal mount, with integrated push bar clasp and safety catch, marked '14K'; 8.0 grams **£400-600**



- 147 A pair of ridged cufflinks, the panels with vertical grooves, chain connected to torpedo fittings, yellow metal marked '18ct', 9.10 grams. **£500-800**



- 148 A pair of hoop earrings and matching rings; the hoop earrings of twisted chain design, with ear post and butterfly fittings, unmarked yellow metal surface testing as 9ct, 2.7 cm drop; together with two matching rings of conforming design, size P; total weight of items 15.4 grams. (3)
Please note: Unless otherwise stated, lots have been tested using an electronic tester. This is a surface test only and is not a guarantee of metal purity. **£250-350**



- 149 A gem-set fringe necklace with matching earrings, composed of twenty-one oval-cut paste, bezel-set and suspended from a figure-of-eight link chain, in yellow metal marked '750', together with a pair of paste-set drop earrings, with no earring backs; 11.0 grams **£400-600**



- 150 A diamond-set dress ring, of tapered and fluted design, with three decorative bands of round brilliant-cut diamonds, estimated total weight 0.20ct, in two-toned metal stamped '18ct', size N, 6.51 grams. **£450-650**



Fine Jewellery, Watches & Silver, 17th Dec, 2025 09:30

- 151 A diamond solitaire ring, comprising a central round brilliant-cut diamond in a six claw setting, with an estimated carat weight of 0.83ct, to tapering shoulders with circular drilled detail, to an 18ct white gold knife-edge band, size N, 4.9 grams. **£400-600**



- 152 A tanzanite and diamond-set bracelet, by Iliana, composed of a row of marquise-cut tanzanites, claw-set between round brilliant diamonds, in a yellow metal mount marked '18K', with integrated push bar clasp and safety catch, measuring approximately 20.5cm; 30.9 grams **£800-1,200**



- 153 A diamond trilogy ring, with an estimated total diamond weight of 1.00ct, comprising three graduated round brilliant-cut diamonds in claw setting, between tapered shoulders leading to a flat shank, white metal stamped '750', size J, 4.3 grams. **£700-900**



- 154 A purple sapphire crossover ring, featuring a cushion-cut purple sapphire of 7.1mm x 6.1mm x 4.5mm, set between bypass shoulders leading to a tapering shank, unmarked white metal testing as platinum, size N½, 6.4 grams.
Accompanied by a Stalwart gem report (no.: 112493) stating the stone of Mogok, Myanmar origin, with no indications of thermal treatment, dated July 2006.
Please note: Unless otherwise stated, lots have been tested using an electronic tester. This is a surface test only and is not a guarantee of metal purity. **£600-800**



- 155 An Art Deco style aquamarine and diamond-set ring, claw-set with a step-cut aquamarine, measuring approximately 15.8mm x 13.5mm, flanked by six baguette-cut diamonds, in a tapering design, to an unmarked white metal shank surface tested as 18ct; 10.0 grams
Please note: Unless otherwise stated, lots have been tested using an electronic tester. This is a surface test only and is not a guarantee of metal purity. **£1,000-1,500**



Fine Jewellery, Watches & Silver, 17th Dec, 2025 09:30

- 156 A diamond-set coil ring, by Maria Grazia Cassetti, centrally embellished with an applied zig-zag motif encrusted with diamond accents, white metal signed and bearing Italian assay marks '750' and registration marks, 1.5 cm wide, size Q, 19.7 grams. **£1,000-1,500**



- 157 A double pearl lariat necklace, composed of pocorn link chain, with two cultured pearls at each terminal, of cream and grey body colour, measuring approximately 12.2mm each, set beneath a diamond-set stylised heart motif, in white metal marked '18K', with maker's mark 'WCJ', the necklace measuring approximately 43cm, with push bar clasp and safety catch; 18.1 grams **£1,200-1,800**



- 158 A diamond-set half-hoop ring in 14ct white gold, with an estimated total diamond weight of 0.40ct, comprising three graduated round brilliant-cut diamonds, in claw settings to a tapering shank, Sheffield hallmarks, size R, 3.5 grams. **£150-250**



- 159 A long cultured pearl necklace with a Modernist centrepiece, comprising four cylinders each set with a diamond accent on both sides, attached to a hand-knotted strand of round cultured pearls, measuring 6.2 mm in diameter, metal testing as silver and 18ct, overall length 83.0 cm, 59.6 grams. Please note: Unless otherwise stated, lots have been tested using an electronic tester. This is a surface test only and is not a guarantee of metal purity. **£300-500**



- 160 A cultured pearl solitaire ring, the cultured pearl measuring approximately 8.3mm, with diamond-set crossover-style shoulders, to a white metal mount, marks rubbed, surface tested as 18ct, size P1/2; 3.7 grams. Please note: Unless otherwise stated, lots have been tested using an electronic tester. This is a surface test only and is not a guarantee of metal purity. **£150-250**



Fine Jewellery, Watches & Silver, 17th Dec, 2025 09:30

- 161 A diamond-set solitaire pendant, claw-set with a round brilliant diamond measuring approximately 4.25mm with an estimated carat weight of 0.28ct, in a teardrop-shaped pendant, to a white metal chain with bolt ring clasp, marked '14K', measuring approximately 38cm; 2.0 grams **£180-220**



- 162 A cultured pearl necklace, comprising a single row of 112 cultured pearls, alternating between cream and peacock shades, the cream pearls measuring approximately 6.8mm in diameter, the peacock pearls measuring approximately 9.2mm in diameter, hand knotted and measuring approximately 106.0cm in length, 108.0 grams. **£400-600**



- 163 A diamond solitaire ring and a band ring, the solitaire featuring a claw-set round brilliant-cut diamond of estimated 0.83ct, to a plain platinum ring shank, size T, 5.24 grams, together with a plain platinum band ring, size T ½, 3.6 grams. **£800-1,200**



- 164 A South Sea Tahitian cultured pearl necklace, comprising a single row of graduated Tahitian cultured pearls of various shades, the pearls graduating between 8.3mm and 11.0mm, completed with a ball clasp marked '750', approximately 41.5cm in length, 49.0 grams. **£300-500**



- 165 A diamond-set drop pendant, comprising a pear-shaped domed pendant, partly pierced with foliate-style motifs and pavé-set with round brilliant-cut diamonds, with beaded detail to one side, leading to a trace link chain, with additional diamond-set figure-of-eight spacers, the pendant and chain in tri-colour metal marked '750'; 15.7 grams. **£800-1,200**



Fine Jewellery, Watches & Silver, 17th Dec, 2025 09:30

- 166 A diamond-set band, featuring a gypsy-set round brilliant diamond with an estimated carat weight of 0.05ct, to a white metal band with ridged design, marked 'P950', size P1/2; 6.0 grams **£300-500**



- 167 A cultured pearl and diamond necklace and a pair of cultured pearl and diamond earrings; the necklace comprising a 8.3mm cream cultured pearl detailed with a diamond-set surmount of foliate design, to a stylized bale and suspended from an 18ct fine curb-link chain measuring approximately 46.0cm in length, completed with a lobster clasp, the setting in yellow metal surface testing as 18ct; together with a pair of cultured pearl and diamond earrings, each featuring a cream oval-shaped cultured pearl of approximately 7.4mm x 8.3mm, to a surmount collet-set with a single round brilliant-cut diamond, with post and butterfly fittings, in 18ct white gold, drop length approximately 12.7mm; Gross weight of items 8.5 grams (2). Please note: Unless otherwise stated, lots have been tested using an electronic tester. This is a surface test only and is not a guarantee of metal purity. **£400-600**



- 168 Five rings; comprising a tri-tone ring, of bamboo and bead design, tri-tone metal surface tested as 18ct gold, size M, two signet rings, in yellow metal with rubbed marks, surface tested as 18ct, sizes M1/2 and M, a sapphire-set ring, in yellow metal surface tested as 18ct, size M and an emerald-set half hoop ring, in yellow metal surface tested as 18ct, size N1/2; 10.6 grams (5)
Please note: Unless otherwise stated, lots have been tested using an electronic tester. This is a surface test only and is not a guarantee of metal purity. **£350-450**



- 169 A laboratory-grown diamond solitaire ring, centred with an oval-cut diamond of 1.51ct, between twisted diamond-set shoulders leading to shank, in unmarked yellow metal surface testing as 14ct, size K, 4.3 grams.
Diamond has been inscribed with an IGI report number, which states the stone has a colour grade G and clarity grade VS2.
Please note: Unless otherwise stated, lots have been tested using an electronic tester. This is a surface test only and is not a guarantee of metal purity. **£200-300**



Fine Jewellery, Watches & Silver, 17th Dec, 2025 09:30

- 170 A diamond-set pendant, composed of a round brilliant diamond measuring approximately 5.4mm, with an estimated carat weight of 0.60ct, bezel-set in a hexagon-shaped setting, with a diamond-set surmount, in white metal surface tested as 18ct, to a white metal trace link chain and bolt ring clasp marked '925', 3.6 grams
Please note: Unless otherwise stated, lots have been tested using an electronic tester. This is a surface test only and is not a guarantee of metal purity. **£600-800**



- 171 A sapphire and diamond-set necklace, set with three claw-set oval sapphires and four round brilliant diamonds, in a slightly curved mount featuring 'X'-style links, to a flat snake-link chain to a lobster clasp, in yellow metal marked '14K', measuring approximately 44.7cm; 8.8 grams **£400-600**



- 172 A sapphire and diamond line bracelet, comprising twenty-five square-cut sapphires channel-set in yellow metal, each sapphire interspersed with two channel-set round brilliant-cut diamonds, bracelet measuring approximately 17.5cm in length, completed with an integral box clasp (deficient) and additional safety catch, yellow metal surface testing as 14ct, 11.5 grams. Please note: Unless otherwise stated, lots have been tested using an electronic tester. This is a surface test only and is not a guarantee of metal purity. **£400-600**



- 173 A Mabé pearl and onyx necklace, comprising three rows of cultured pearls and round onyx beads, bar spacers set with rows of diamond accents, the teardrop-shaped centre piece functioning as a box clasp, centred with a mabé pearl within a conforming hardstone onyx (?) surround, further embellished with diamonds, yellow metal marked '750', overall length 38.5 cm, 38.6 grams. **£600-800**



- 174 A pair of cultured South Sea pearl drop earrings; the pearls of rounded teardrop shape, with ivory colour and silver-pink lustre, suspended from hoops of pink metal surface testing as 14ct, measuring 13mm in diameter, featuring diamond accents of approximately 1.5mm each, in alternating round and square millgrain settings, to hinged posts, total weight 10.9 grams. Please note: Unless otherwise stated, lots have been tested using an electronic tester. This is a surface test only and is not a guarantee of metal purity. **£200-300**



Fine Jewellery, Watches & Silver, 17th Dec, 2025 09:30

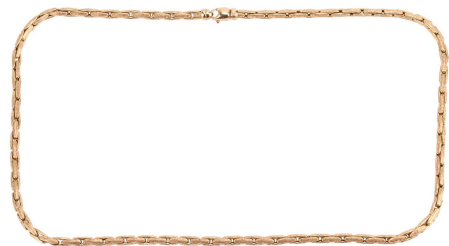
- 175 A diamond-set three-stone ring, claw-set with three round brilliant diamonds, with an estimated total diamond carat weight of 0.43ct, to a bi-colour metal mount marked '18ct' and 'Plat', size N1/2; 2.8 grams **£200-300**



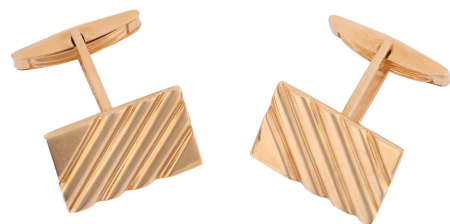
- 176 A diamond cluster ring, with an estimated total diamond weight of 2.00ct, the rhombic cluster is composed of a marquise-cut diamond and twelve round brilliant-cut diamonds, set in a wire basket and tapered shoulders, in white metal surface testing as 18ct, ring head 2.5 x 1.9 cm, 7.0 grams.
Please note: Unless otherwise stated, lots have been tested using an electronic tester. This is a surface test only and is not a guarantee of metal purity. **£600-800**



- 177 An Italian textured-link necklace, featuring a series of textured rounded-box links completed with a lobster clasp, stamped 750, 61.5cm in length, 31.5 grams. **£1,800-2,200**



- 178 A pair of cufflinks of rectangular form with striated design, the panels fitted with toggle swivels, yellow metal marked '750', panel measures 2.0 x 1.3 cm, total weight of items 16.73 grams. **£800-1,200**



- 179 A ruby and diamond dress ring, six rectangular table-cut rubies and three single-cut diamonds composing a cruciform, between bifurcated shoulders leading to an angular shank, yellow metal stamped '585', size L, 2.8 grams. **£200-300**



Fine Jewellery, Watches & Silver, 17th Dec, 2025 09:30

- 180 A sapphire and diamond crossover ring, consisting of two pear-shaped sapphires claw-set on white metal mounts, each encircled with diamond accents, to a tapered flat shank in yellow metal, marked as '750', ring size M½, total weight of item 4.6 grams. **£400-600**



- 181 A ruby and diamond-set cluster ring, centred with an oval mixed-cut ruby measuring approximately 10.2mm x 7.2mm, surrounded by sixteen round brilliant diamonds, claw-set in a yellow metal mount marked '750', size S; 5.9 grams **£500-700**



- 182 An 18ct yellow gold ball link mesh necklace and bracelet set; comprising highly flexible mesh of ball links, with concealed tongue clasp fastenings, Italian and British assay marks; necklace measures 34.0 cm laying flat (can be extended to 42.5 cm), matching bracelet measures 16.0 - 19.5 cm long; total weight of items 61.4 grams. (2) **£3,000-5,000**



- 183 A pair of triangular cufflinks of reeded design, fitted with swivel backs, yellow metal marked '750', cufflink motif measures 2.4 cm across, total weight of item 46.7 grams. **£2,000-2,500**

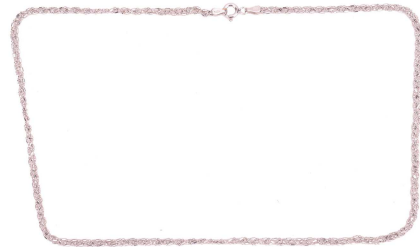


- 184 A sapphire and diamond dress ring, the egg-shaped ring head collet-set with an oval-cut sapphire of 7.0 x 5.5 x 4.2 mm, in surround bead-set with round brilliant-cut diamonds, leading to tapering shank in yellow metal marked '750', ring head 1.5 x 1.1 cm, size N, 7.2 grams. **£700-900**



Fine Jewellery, Watches & Silver, 17th Dec, 2025 09:30

- 185 A braided ball link chain, completed with a spring-ring clasp, Italian assay marks for 18ct, overall length 44.0 cm, 6.6 grams. **£300-500**



- 186 Two rings; comprising a diamond-set seven-stone ring, in a white metal mount marked '750', size N, together with a diamond-set dress ring, grain-set with round brilliant diamonds in a 9ct yellow gold mount, size L; 4.8 grams (2) **£300-500**



- 187 A ruby cabochon and diamond dress ring, comprising three graduated oval ruby cabochons, embellished with single-cut diamonds, to a shank composed of four knife-edged bands, in white metal stamped '750', size R½, 7.5 grams. **£600-800**



- 188 A single stone diamond ring, the princess-cut diamond claw-mounted in platinum above channel-set diamond shoulders, accompanied by a GIA report stating that the diamond is E, VS1 and 0.41 carats; together with a platinum and diamond set crossover wedding band en suite. Size L 1/2, Gross weight 8.1 grams
Complete with boxes and paperwork. **£400-600**



- 189 A star sapphire and diamond-set ring, centrally set with an oval sapphire cabochon, displaying asterism, in a bezel setting leading to diamond-set shoulders, in an unmarked white metal mount, surface tested as 9ct, size O; 6.7 grams
Please note: Unless otherwise stated, lots have been tested using an electronic tester. This is a surface test only and is not a guarantee of metal purity. **£600-800**

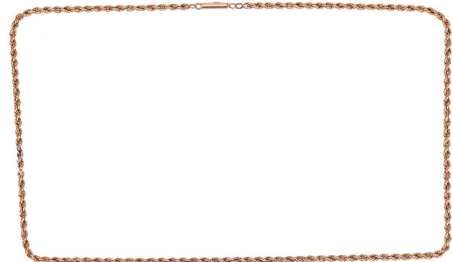


Fine Jewellery, Watches & Silver, 17th Dec, 2025 09:30

- 190 A diamond-set hinged bangle, of interlocking woven design, partly set with round brilliant diamonds, with integrated push bar clasp, marked '375', together with a matching necklace, the curved bar of similar design, and leading to a flat link chain, with box clasp marked '9ct'; 13.8 grams (2) **£300-500**



- 191 A twisted rope chain necklace, completed with a tube clasp, marked '9ct', overall length 46.0 cm, 5.1 grams. **£100-200**



- 192 A sapphire and diamond-set bracelet, with marquise-cut sapphires, set at an angle, interspersed by diamond-set links, in a yellow metal mount, with integrated clasp and safety catch, marked '14K', measuring approximately 18.9cm; 12.0 grams **£600-800**



- 193 A double-strand diamond-set feather necklace, featuring a feather pendant, grain-set with round brilliant-cut diamonds and suspended from a yellow metal cable-link chain, the second cable link chain suspending a drop of three emerald-cut diamonds, interspersed with strands of cable-link chain, the stones in four claw settings and measuring an estimated carat weight of 0.34ct, 0.21ct, 1.53ct respectively, the necklace completed with a lobster clasp marked '750', the feather pendant also marked '750', the necklace measuring 41.0cm in length, drop from longer chain 7.5cm, 13.0 grams. **£850-1,250**



- 194 A signet ring, in 9ct yellow gold, the rectangular panel engraved with monogram 'GD', to shoulders with chevron-style detailing, to a court-shaped shank, the interior engraved with the following, 'Graham 15.10.66 from Lorraine and Rochelle', hallmarked Birmingham 1964, size O1/2; 5.9 grams **£150-250**



Fine Jewellery, Watches & Silver, 17th Dec, 2025 09:30

- 195 Three band rings; The first a 9ct yellow gold band ring, with floral engraving, size R, the band 8.2mm wide, 5.19 grams; The second a diamond-set band ring, featuring rose and scrolled details, the rose motifs interspersed with a round brilliant-cut diamond of approximately 1.0mm, size K, in yellow metal surface testing as 9ct, the band 6.5mm wide, 5.09 grams; The third a band ring engraved with scrolled and geometric detail, in 9ct yellow gold, size Q, the band 7.0mm wide, 3.55 grams. (3).



Please note: Unless otherwise stated, lots have been tested using an electronic tester. This is a surface test only and is not a guarantee of metal purity. **£300-500**

- 196 A fancy link bracelet set with pearl and sapphire, comprising a series of hinged geometric links, centred with a circular-cut sapphire in a millgrained collet, flanked by two split pearls, completed with a conforming box clasp, metal stamped '585', overall length 18.0 cm, 12.4 grams. **£400-600**



- 197 A pair of ridged cufflinks, the panels with vertical grooves, chain connected to torpedo bar fittings, yellow metal marked '18ct', 9.95 grams. **£500-800**



- 198 Three rings; comprising a diamond-set floral cluster ring, in a bi-colour metal mount marked '18ct', size O1/2, a diamond-set three-stone ring, in a bi-colour metal mount marked '18ct', size N, and a diamond-set crossover ring in a yellow metal mount marked '18ct', size N; 7.0 grams (3) **£400-600**



- 199 A harlequin beaded necklace, comprising a series of briolette-cut fancy coloured sapphires, connected to a cable link and toggle clasp, in yellow metal stamped '18K', overall length 44.0 cm, 19.9 grams. **£200-300**



Fine Jewellery, Watches & Silver, 17th Dec, 2025 09:30

- 200 A diamond-set ring, of a chequerboard design, comprising three round brilliant-cut diamonds in square mounts, interspersed with smaller diamond accents, estimated total weight 0.38ct, in yellow metal stamped '750', size O, 5.49 grams. **£600-800**
- 201 An anchor link bracelet, fastened with lobster clasp, marked as '750', link width 8.6 mm, overall measuring 23.0 cm in length, total weight of item 34.85 grams. **£1,800-2,200**
- 202 An emerald, pink sapphire and diamond cocktail ring, comprising a central collet-set step-cut emerald, of yellowish-green hue and estimated at 17.70ct, the cushion-shaped ring grain-set with round brilliant-cut diamonds, round-cut pink sapphires and round-cut emeralds, the stones arranged in chevron bands, in yellow metal marked '750', accompanied by GIA and IGI reports, size M, 15.5 grams. **£3,000-5,000**
- 203 A heavy anchor link necklace and a matching bracelet; fastened with lobster clasp, marked '750', link width 8.8 mm, measuring 51.0 cm and 21.0 cm in length respectively, total weight of item 107.69 grams. (2) **£5,000-8,000**
- 204 A large heart-shaped emerald dress ring, the emerald measures 13.8 x 15.0 x 8.2 mm, claw-set to the centre between trumpeted shoulders of scroll form, embellished with baguette-cut diamonds and sapphire cabochon terminals, leading to a tapering flat shank, unmarked yellow metal testing as 18ct, size O, 11.1 grams.
Please note: Unless otherwise stated, lots have been tested using an electronic tester. This is a surface test only and is not a guarantee of metal purity. **£2,500-3,500**



Fine Jewellery, Watches & Silver, 17th Dec, 2025 09:30

- 205 A pair of 'Marine knot' cufflinks in 18ct yellow gold, textured and terminated with nautical rope knot motifs, partial British hallmarks, overall measures 2.5 cm wide, the total weight of items 14.29 grams. **£800-1,200**



- 206 A diamond three-stone dress ring, with an estimated total diamond weight of 0.87ct, comprising three round brilliant-cut diamonds of 4.3mm, in a two-toned bar setting, leading to a tapering flat shank, Italian assay marks '750', size Q, 5.6 grams. **£700-900**



- 207 A pair of earrings set with old-cut diamonds, the scalloped hook-shaped mount, each illusion-set with six old-cut diamonds, with an estimated total weight of 2.16ct for the pair, fitted with post and a hinged back, unmarked white metal testing as 9ct, 2.8 cm drop, 8.1 grams.
Please note: Unless otherwise stated, lots have been tested using an electronic tester. This is a surface test only and is not a guarantee of metal purity. **£300-500**



- 208 A three-stone diamond pendant, claw-set with three round brilliant diamonds of graduated sizes, with an estimated total diamond carat weight of 0.50ct, in a 9ct white gold mount, to a 9ct gold flat curb link chain, measuring approximately 46cm; 3.6 grams **£500-700**



- 209 A pair of diamond-set stud earrings, each consisting of three graduated round brilliant-cut diamonds, with an estimated total weight of 1.00ct for the pair, ear post fittings, butterfly backs deficient, unmarked white metal surface testing as 18ct, 1.3 cm, 1.7 grams.
Please note: Unless otherwise stated, lots have been tested using an electronic tester. This is a surface test only and is not a guarantee of metal purity. **£500-700**



Fine Jewellery, Watches & Silver, 17th Dec, 2025 09:30

- 210 A diamond-set floral ring by Renu Oberoi, featuring a rose form, fully grain-set with round brilliant-cut diamonds, to an open white metal ring shank of bypass design, the shank with segmented detail, marked '750', size L, boxed, 7.0 grams. **£300-500**



- 211 A cultured pearl necklace with gem-set clasp in 9ct gold, comprising a strand of round cultured pearls of 6.0 mm, hand-knotted to a cluster box clasp set with circular-cut sapphires and cultured pearls, British assay marks, overall length 50.0 cm, 30.4 grams. **£300-500**



- 212 A pair of cultured pearl and diamond-set earrings, the cultured pearls measuring approximately 9.5mm, each flanked by a stylised leaf design panel, pavé-set with diamonds, accented by tapered baguette-cut diamonds, in a yellow metal mount with post fittings, surface tested as 18ct, earring backs marked '750'; 8.6 grams
Please note: Unless otherwise stated, lots have been tested using an electronic tester. This is a surface test only and is not a guarantee of metal purity. **£400-600**



- 213 A diamond-set necklace, composed of a V-shaped bar, with diamond-set chevron detailing, suspending a pear-shaped diamond-set pendant, to a box-link chain measuring approximately 42cm, in white metal stamped '585'; 8.4 grams **£500-800**



- 214 A diamond eternity ring, featuring forty round brilliant-cut diamonds, with an estimated total carat weight of 0.72ct, claw-set in white metal marked '18K', size T, 1.0 grams. **£250-350**



Fine Jewellery, Watches & Silver, 17th Dec, 2025 09:30

- 215 A pair of diamond-set cufflinks, of elongated oval form with repousse design, one panel centred with a star-set old-cut diamond, the other pave-set with a row of three old-cut diamonds in a navette mount, connected by a figure of eight link, unmarked yellow metal testing as 18ct, 6.4 grams. Please note: Unless otherwise stated, lots have been tested using an electronic tester. This is a surface test only and is not a guarantee of metal purity. **£400-600**



- 216 A diamond solitaire ring, featuring a central claw-set princess-cut diamond of estimated 0.44ct, to tapered shoulders leading to a yellow metal ring shank marked '750', size H ½, 4.2 grams. **£300-500**



- 217 A pair of oblong cufflinks, with reeded details at the centre, fitted with linked torpedo backs, yellow metal marked '18ct', total weight of items 9.61 grams. **£400-600**



- 218 Two pairs of earrings; comprising a pair of paste-set earrings, of stylised foliate design, in 18ct gold mounts, with screw backs, together with a pair of faceted bead drop earrings, in yellow metal surface tested as 18ct; 5.7 grams (2) Please note: Unless otherwise stated, lots have been tested using an electronic tester. This is a surface test only and is not a guarantee of metal purity. **£200-400**



- 219 A sapphire and paste-set half-hoop ring, claw-set in an alternating pattern, to a 9ct gold mount, size Q; 1.8 grams **£200-300**



Fine Jewellery, Watches & Silver, 17th Dec, 2025 09:30

- 220 A multi gem-set bead necklace, composed of five rows of faceted beads, of various gems including emeralds, sapphires and rubies, to a multi-coloured cord clasp with tassel terminal; 66.7 grams **£100-150**



- 221 A heart-shaped pendant with diamonds, comprises a hollow heart pendant in yellow precious metal, fully pavé set with rose-cut diamonds, engraved scrollwork on the edges, pierced lattice and daisy motif at the reverse, suspending on a dove surmount with diamond and ruby accents, to a shepherd's crook bail, Syrian hallmarked '12ct', overall measuring 4.9 x 2.6 cm, total weight of item 10.0 grams. **£400-600**



- 222 A closed bangle, decorated with tiered fluting borders and bead details, yellow metal unmarked surface testing as 14ct, inner diameter 5.7 cm, 19.9 grams.
Please note: Unless otherwise stated, lots have been tested using an electronic tester. This is a surface test only and is not a guarantee of metal purity. **£600-800**



- 223 A cobra cocktail ring, sculpted as a spiralling cobra, with geometric patterns on the back, set with green and red enamel, yellow metal stamped 'K18', size L, 12.5 grams. **£500-700**



- 224 A jade pendant on chain, comprising a large jadeite bi disc, of mottled green on a bluish white ground, measuring 5.5 cm wide, to a trefoil mount embellished with rubies, suspended on a loose rope chain 77.0 cm, white metal marked '14K', 35.5 grams. **£400-600**



Fine Jewellery, Watches & Silver, 17th Dec, 2025 09:30

- 225 A Moroccan Berber necklace, comprising a single string of large pressed amber beads, of graduated barrel-shape in butterscotch colour, largest measuring 3.5 x 3.0 cm, overall length 67.0 cm, 458.5 grams. **£200-300**



- 226 A jadeite pendant and a pair of earrings; the pendant set featuring a round jade bi disc, in a conforming surround and centred with a pierced Chinese character for 'feelings', yellow metal stamped '18K', 3.1 cm drop length; the pair of stud earrings each containing an oval jadeite cabochon of 12.0 x 9.0 mm, in a wire surround with post fittings, yellow metal stamped '750'; total weight of items 7.5 grams. (2) **£200-300**



- 227 A Thai 'Noppakao' princess ring, tiered ring head encrusted with pear cabochons of various gemstones, and CZ embellishments, leading to shank, gilt metal, size M½, 3.2 grams. **£150-250**



- 228 A gem-set peacock brooch, the body set with a large pear-cut synthetic colour-change sapphire, to a mount composed of twisted cables, tail scattered with claw-set gemstones such as turquoise cabochon and circular-cut emeralds, etc., crown embellished with cultured pearls, brooch fittings to the reverse, yellow metal bearing Israeli hallmarks for 14ct, 7.5cm x 5.0cm, 16.5 grams. **£600-800**



- 229 A lattice-work dress ring, stamped with intricate decorations and beaded details, unmarked yellow metal testing as high carat, ring head 3.3 x 1.8 cm, size P, 2.5 grams. Please note: Unless otherwise stated, lots have been tested using an electronic tester. This is a surface test only and is not a guarantee of metal purity. **£200-300**



Fine Jewellery, Watches & Silver, 17th Dec, 2025 09:30

- 230 A hematite bead necklace and earrings suite; the Mughal-style necklace pendant featuring a cluster of hematite beads to the base, leading to a double-row necklace of hematite beads, interspersed with faceted gilt spacers, to a base metal screw clasp, together with a pair of matching earrings, with shepherd's hook earring backs, in yellow metal surface tested as 18ct; 66.4 grams (2)

Please note: Unless otherwise stated, lots have been tested using an electronic tester. This is a surface test only and is not a guarantee of metal purity. **£500-700**



- 231 A sapphire and diamond dress ring, consisting of eight baguette-cut sapphires, channel set in a yellow metal mount, further six brilliant diamonds with an estimated total weight of 0.36ct, pavé set on each side of the under gallery, scrolled shoulders to a tapered flat shank, marked as '18', ring size O, total weight of item 9.6 grams. **£600-800**



- 232 A diamond and enamel necklace; the central set curved panel pavé set with tonal champagne and cognac coloured diamonds around rectangular sections of alternating textured gold and enamelled ribbonwork; suspended from two cable link chains in yellow and burnished blackened metal, stamped '21'ct. Overall length 49cm. Gross weight 20.7 grams. In Al Muftah Jewellery case. **£1,500-2,000**



- 233 A sapphire and diamond cluster ring, centred with a cushion-cut blue sapphire, measuring 10.8 x 9.4 x 4.0 mm, encircled with fourteen single-cut diamonds, leading to a D-profile shank in unmarked white metal, surface testing as 18ct, ring head 1.8 x 1.6 cm, size Q, 7.6 grams.

Please note: Unless otherwise stated, lots have been tested using an electronic tester. This is a surface test only and is not a guarantee of metal purity. **£700-900**



- 234 A pair of knot cufflinks, in yellow metal marked '750', the textured knots leading to toggle fittings, with a cross-hatch pattern; 12.6 grams **£600-800**



Fine Jewellery, Watches & Silver, 17th Dec, 2025 09:30

- 235 A synthetic sapphire dress ring in 9ct gold, the square-cut synthetic sapphire of 7.9 x 7.8 mm, in a conforming illusion surround with diamond accents, British assay marks, size T, 3.7 grams. **£100-200**



- 236 A pair of cultured pearl cluster earrings, the slightly domed earrings closely-set with cultured pearls and gold beads of graduated sizes, with one pearl deficit, to an 18ct yellow gold mount with hinged ear clips, stamped with London import marks, 1988, together with an unassociated Mikimoto box; 12.1 grams **£300-400**



- 237 A keshi pearl torsade necklace, comprising a multi-strand of keshi pearls with cream and black body colour, knotted to a bow-shaped box clasp, cinched with a line of diamonds, the twisted fluting mount pave-set with circular-cut sapphires, yellow metal stamped '14K 585', overall length 38.5 cm, 75.7 grams. **£300-500**



- 238 A diamond solitaire ring, with a round brilliant-cut diamond measuring approximately 5.6mm, with an estimated carat weight of 0.65ct, in a white metal bezel setting, to tapered shoulders leading to a court-shaped shank, in 18ct yellow gold, hallmarked London, 1995, size H; 3.1 grams **£400-600**



- 239 A pair of cultured Akoya pearl and diamond drop earrings; the pearls of approximately 6.5mm each, of creamy ground with silver-pink lustre, suspended from an open heart-shaped stud, with a diamond accent, set in unmarked yellow metal surface testing as 9ct, to post and butterfly fittings, total weight 1.7 grams.
Please note: Unless otherwise stated, lots have been tested using an electronic tester. This is a surface test only and is not a guarantee of metal purity. **£150-250**



Fine Jewellery, Watches & Silver, 17th Dec, 2025 09:30

- 240 A gem-set figure-of-eight link bracelet, comprising a series of figure-of-eight links with navette-cut ruby spacers in a surround set with CZs, completed with a concealed tongue clasp, unmarked yellow metal surface testing as 18ct, overall length 18.5 cm, 10.2 grams.
Please note: Unless otherwise stated, lots have been tested using an electronic tester. This is a surface test only and is not a guarantee of metal purity. **£500-700**



- 241 A diamond-set band ring, featuring three grain-set rows of ten round brilliant-cut diamonds, with an estimated total carat weight of 0.87ct, the rows separated by millegrained bar detail, ring head measuring 7.5mm in width, to a white metal ring shank marked 'Plat', size K, 7.4 grams. **£300-500**



- 242 A pair of coin-mounted cufflinks, each set with a coin with lotus motif on the obverse inscribed '24ct fine gold / 4 grams', relief of Goddess Lakshmi to the reverse, within a bright-cut surround to fittings marked '18ct', total weight 14.76 grams. **£600-800**



- 243 An emerald and diamond line bracelet, comprising thirteen oval-cut emeralds in claw mounts, flanked by hinged links in the form of a tilde, with single-cut diamond accents in illusion settings, tongue clasp fastening, yellow metal marked '14K', 18.7 cm long, 7.2 grams. **£400-600**



- 244 A signet ring with grooved design, the rectangular ring head with vertical ridges, leading to a flat shank, yellow metal stamped '18ct', size T, 8.59 grams. **£500-800**



Fine Jewellery, Watches & Silver, 17th Dec, 2025 09:30

- 245 A fire opal and diamond half-hoop ring in 18ct gold, comprising three oval-cut fire opals, interspersed with round brilliant-cut diamond accents, to a flat shank, British hallmarks, size N, 3.4 grams. **£200-300**



- 246 A topaz half-hoop ring in 9ct white gold, comprising five oval-cut topazes, in a bar setting with millgrain details and two diamond accents, British assay marks, size P, 2.0 grams. **£80-120**



- 247 A pair of paste and diamond drop earrings, each claw-set with a purple pear-cut paste, with single-cut diamond surmount, peg and butterfly fittings, in white metal surface testing as 9ct, 1.8 cm drop, 3.5 grams.
Please note: Unless otherwise stated, lots have been tested using an electronic tester. This is a surface test only and is not a guarantee of metal purity. **£150-250**



- 248 A diamond-set link bracelet, comprising a series of square links with canted corners, with brushed texture, connected with diamond-set bar links, each grain-set with five round brilliant-cut diamonds, measuring 16.0cm in length, completed with an integral box clasp and two additional safety catches, in white metal stamped '750', 15.5 grams. **£400-600**



- 249 A pair of aquamarine and diamond stud earrings, each centred with a circular-cut aquamarine of 5.8 mm, surrounded by single-cut diamonds, peg and butterfly fittings, in white metal surface testing as 9ct, 2.9 grams.
Please note: Unless otherwise stated, lots have been tested using an electronic tester. This is a surface test only and is not a guarantee of metal purity. **£150-250**



Fine Jewellery, Watches & Silver, 17th Dec, 2025 09:30

- 250 Two rings; comprising a tanzanite and diamond-set cluster ring, in a 9ct white gold mount, size R, together with a gem-set half hoop ring in a 9ct gold mount, size Q; 5.6 grams (2) **£200-300**



- 251 A diamond floral cluster ring in 18ct white gold, with an estimated total diamond weight of 2.15ct, the daisy head cluster comprising seven round brilliant-cut diamonds of 4.4mm, claw-set between tapered shoulders, British assay marks 2000, ring head 1.5cm wide, shank soldered with sizing beads, size O, 5.3 grams. **£600-800**



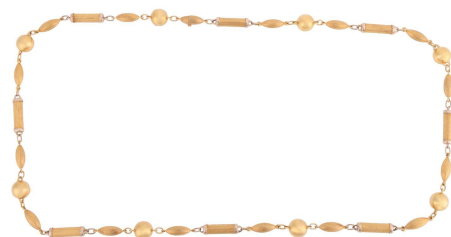
- 252 A diamond line bracelet, with an estimated total diamond weight of 9.35ct, comprising a series of carre-cut diamonds in articulated channel mounts, completed with a conforming box clasp, yellow metal stamped '750', overall length 18.0 cm, 18.3 grams. **£3,000-5,000**



- 253 A black diamond solitaire ring, comprising a large round brilliant-cut black diamond measuring 15.0 mm in diameter, claw-set to a pierced square mount, to a wide tapering shank, in unmarked yellow metal testing as 9ct, size Z+1, 11.4 grams. Please note: Unless otherwise stated, lots have been tested using an electronic tester. This is a surface test only and is not a guarantee of metal purity. **£1,500-2,000**



- 254 A long fancy link necklace, comprising a series of hollow links, alternating with a torpedo-shaped link, a tubular link and a spherical ball interval, in brush finish, completed with a conforming box clasp, yellow metal stamped 'Italy 18k', 75.0 cm long, 57.0 grams. **£3,000-5,000**



Fine Jewellery, Watches & Silver, 17th Dec, 2025 09:30

- 255 A signet ring, the rectangular head with diagonally striated design, tapering to a flat shank, yellow metal stamped '750', size Z+1, 20.2 grams. **£1,000-1,500**



- 256 A pair of 'Marine knot' cufflinks in 18ct yellow gold, textured and terminated with nautical rope knot motifs, partial British hallmarks, overall measures 2.5 cm wide, the total weight of items 13.95 grams. **£800-1,200**



- 257 Two amethyst-set rings, the first featuring a step-cut amethyst flanked by four round brilliant diamonds, to an unmarked yellow metal mount, surface tested as 14ct gold, size M, together with an amethyst-set target ring, in a 9ct yellow gold mount, size G1/2; 6.3 grams (2)
Please note: Unless otherwise stated, lots have been tested using an electronic tester. This is a surface test only and is not a guarantee of metal purity. **£200-300**



- 258 A gem-set bracelet, set with oval mixed-cut black gemstones, in a bi-colour metal mount, with integrated clasp and safety catch, marked '14K'; 10.5 grams **£700-900**



- 259 A wedding band in 18ct tri-coloured gold, the flat band with diagonal stripes alternating yellow, pink and white gold, British hallmarks, size Y½, 5.1 grams. **£200-300**



Fine Jewellery, Watches & Silver, 17th Dec, 2025 09:30

- 260 A garnet butterfly pendant, with a round colourless spinel highlight, four pear-shaped garnets and a marquise garnet, assembled as a figural butterfly, claw set on a yellow precious metal mount, to a bail, marked as '750', overall measuring 1.4 x 2.1 cm, total weight of item 4.3 grams. **£200-300**



- 261 A bi-coloured wedding band, with a recessed faceted band in the middle, edges engraved with a geometric design, personal message engraved inside the shank, stamped '18K', size Q, 5.9 grams. **£250-350**



- 262 A diamond-set belcher link necklace, the belcher chain comprising sixteen spectacle-set round brilliant-cut diamond spacers, with an estimated total weight of 0.90ct, completed with a lobster clasp, Italian assay marks '750' and registration mark '1413 RM', overall length 42.0 cm, 6.1 grams. **£300-500**



- 263 A gem-set crossover ring, each terminal bezel-set with two ruby cabochons, pavé-set with round brilliant diamonds to the shoulders, in yellow metal marked '18K', size L 1/2; 6.7 grams **£500-800**



- 264 A pair of mabé pearl earrings, each centred with a cultured mabé pearl measuring approximately 3.6mm across, in textured twist surround, with post fittings and ear clips to the reverse, in 18ct yellow gold, hallmarked Sheffield, 1998; 12.6 grams **£200-300**



Fine Jewellery, Watches & Silver, 17th Dec, 2025 09:30

- 265 A diamond trilogy ring, claw-set with three graduated round brilliant-cut diamonds, between fleur-de-lis shoulders to D-profile shank, in bi-coloured metal stamped 'PLAT 18ct', size Q½, 3.1 grams. **£300-500**
- 266 A cultured pearl choker necklace with a diamond-set clasp, comprising three rows of round cultured pearls, completed with a white metal square clasp, detailed with floral motifs and a Florentine finish, further highlighted with thirty-two round brilliant-cut diamonds, the box clasp with an additional safety catch and stamped '750', necklace measuring 33.5cm in length, 88.0 grams. **£800-1,200**
- 267 A pair of South Sea cultured pearl and diamond drop earrings, each comprising a large egg-shaped white South Sea pearl of 13.0 mm, to an articulated bar surmount, paved with round brilliant-cut diamond accents, peg and butterfly fittings, white metal marked '18K', drop length 3.7 cm, 10.2 grams. **£600-800**
- 268 A diamond-set cluster ring, composed of eleven round brilliant-cut diamonds, of graduated sizes, with an estimated total carat weight of 2.04ct, claw-set in a stepped asymmetrical design, to a flat-shaped white metal shank, marked '18ct', size I with beads; 7.3 grams. **£600-800**
- 269 A Tahitian cultured pearl necklace, comprising a string of baroque pearls in graduated shades of grey to white colour, completed with a pin clasp marked silver top GSV bottom patent, 48.5 cm long, 67.8 grams. **£100-200**

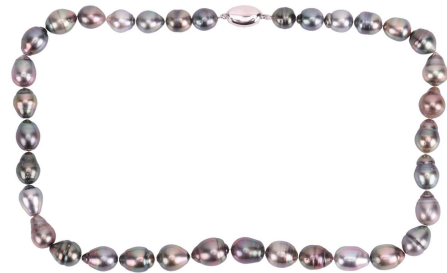


Fine Jewellery, Watches & Silver, 17th Dec, 2025 09:30

- 270 An emerald and diamond-set cluster ring, of angular form, centrally-set with a step-cut emerald measuring approximately 8.8mm x 8.4mm, within a diamond-set surround, to diamond-set shoulders, leading to a ridged white metal shank, surface tested as 9ct, size O; 8.6 grams
Please note: Unless otherwise stated, lots have been tested using an electronic tester. This is a surface test only and is not a guarantee of metal purity. **£400-600**



- 271 A Tahitian cultured pearl necklace, comprising a string of baroque pearls in different shades of grey colour, completed with a pin clasp marked silver top GSV bottom patent, 45.0 cm long, 49.7 grams. **£100-200**



- 272 A diamond solitaire ring, centred with a claw-set round brilliant-cut diamond of 0.70ct, E colour and SI1 clarity, accompanied by a GIA Diamond Dossier, to shoulders of woven design, the overlapping strands each grain set with six round brilliant-cut diamonds, to a platinum ring shank, size J ½, 4.0 grams **£500-700**



- 273 Two opera-length cultured pearl necklaces; the first featuring oval-shaped cultured pearls of approximately 9.0 x 7.75 mm each, of cream body colour with silver pink lustre, length approximately 332 cm; the second featuring off round, oval and teardrop shaped cultured pearls, ranging from 8.0 to 14.0 mm each, individually knotted to a toggle clasp in unmarked yellow metal, surface testing as 14ct, length approximately 165cm.
Please note: Unless otherwise stated, lots have been tested using an electronic tester. This is a surface test only and is not a guarantee of metal purity. **£400-600**



- 274 A ruby dress ring, comprising a central collet-set round-cut ruby, measuring approximately 4.9mm x 3.3mm, to shoulders grain set with six single-cut diamonds, in yellow metal marked '18ct', size K, 4.0 grams. **£300-500**

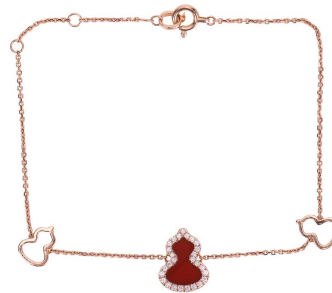


Fine Jewellery, Watches & Silver, 17th Dec, 2025 09:30

- 275 A grooved dress ring, the rectangular ring head and shoulders decorated with vertical ridges, to a tapering flat shank, yellow metal stamped '18ct', size T, 8.44 grams. **£500-800**



- 276 A Qeelin 'Wulu' bracelet set with carnelian and diamonds, featuring Chinese Hulu gourd motifs, set with an agate panel and diamond accents, signed and numbered, in pink metal stamped 'Au750', overall length 18.0 cm, 2.2 grams. **£200-300**



- 277 A gem-set cluster pendant, claw-set with round-cut rubies and round brilliant diamonds in a floral design, to a stepped square-shaped pendant mount, in white metal marked '585'; 4.1 grams **£200-300**



- 278 A diamond-set dress ring, the raised circular setting, pavé-set with round brilliant cut diamonds, flanked by two diamond-set panels with millegrain detailing, in a white metal mount marked '750', size N; 6.5 grams **£400-600**



- 279 A diamond-set initial pendant on chain, in the form of a cursive letter D, pave-set with graduated round brilliant-cut diamonds, with an integral bail, 2.2 cm drop, suspended on a 45.0 cm long box link chain in white metal; all marked '18ct', 4.6 grams. **£300-500**



Fine Jewellery, Watches & Silver, 17th Dec, 2025 09:30

- 280 A three-stone diamond-set ring, composed of three round brilliant-cut diamonds, with an estimated total carat weight of 0.70ct, claw-set in a white metal mount, with tapered shoulders leading to a D-profile shank, marked '18ct', size K1/2; 2.6 grams **£200-300**



- 281 A sapphire-set bracelet, composed of seven oval mixed-cut sapphires, interspersed by open oval-shaped links, leading to a lobster clasp, in yellow metal marked '14K', measuring approximately 18.3cm; 7.8 grams **£500-700**



- 282 A dress ring with screw-motifs, the grooved rectangular head, with four screw motifs to the sides, leading to a flat shank in yellow metal stamped '18ct', size V, 9.36 grams. **£500-800**



- 283 A diamond-set hinged bangle, featuring a central woven design alternating between plain yellow metal and a white metal panel grain-set with three single-cut diamonds, the bangle completed with an integral box clasp and additional safety catch, inner circumference approximately 16.5cm, yellow metal surface testing as 9ct, 9.0 grams. Please note: Unless otherwise stated, lots have been tested using an electronic tester. This is a surface test only and is not a guarantee of metal purity. **£300-500**



- 284 A princess-cut diamond half eternity ring, with an estimated total diamond weight of 0.66ct, comprising eleven princess-cut diamonds in a channel setting, to a tapering shank in white metal marked '14K', size Q, 4.5 grams. **£250-350**



Fine Jewellery, Watches & Silver, 17th Dec, 2025 09:30

- 285 A pair of diamond-set drop earrings, of abstract design, each collet-set with a 4.5 mm round brilliant-cut diamond and a 2.5 mm diamond to the surmount, with an estimated total weight of 0.77ct for the pair, 4.9 cm drop, yellow metal testing as 18ct, 7.67 grams.
Please note: Unless otherwise stated, lots have been tested using an electronic tester. This is a surface test only and is not a guarantee of metal purity. **£600-800**



- 286 A diamond half-eternity ring, featuring a channel of twelve round brilliant-cut diamonds of graduating sizes, to a ring shank marked '750', size I, 3.1 grams. **£150-250**



- 287 A pair of 'Marine knot' cufflinks, textured and terminated with nautical rope knot motifs, yellow metal marked '750', overall measures 2.5 cm wide, the total weight of items 13.8 grams. **£800-1,200**



- 288 Boodle & Dunthorne - a two-toned Amaré ring in 18ct gold; the central recessed band set with three round brilliant-cut diamonds, estimated total weight 0.30ct, signed, London 2000, size L, 7.5 grams.
Boxed, no papers. **£700-900**



- 289 A signet ring with parallel ridged decoration, to a tapering flat shank stamped '18ct', size V, 9.14 grams. **£400-600**



Fine Jewellery, Watches & Silver, 17th Dec, 2025 09:30

- 290 A pair of diamond stud earrings, each claw-set with a round brilliant-cut diamond of 3.0 mm, with an estimated total weight of 0.20ct for the pair, fitted with ear posts and screw-on backs, in white metal marked '14K', 0.8 grams. **£200-300**



- 291 A gate-link bracelet, comprising three-row gate links completed with a heart padlock clasp, in rose coloured metal, the heart padlock marked '15ct', 15.0cm in length, 12.0 grams **£600-800**



- 292 A textured signet ring in 18ct gold, the cushion-shaped ring head cast with abstract design, leading to a tapering shank, British import marks, ring head 1.8 x 1.6 cm, ring size Z+1, 25.89 grams. **£1,200-1,800**



- 293 A group of yellow metal jewellery; comprising a pendant depicting Ganesh, marked '22c', suspended from a yellow metal figaro chain testing as 22ct, 49cm in length, pendant 2.5cm in length, completed with a S hook clasp, 33.0 grams; A plain band ring of D profile, testing as 22ct, size S, 9.5 grams; a namesake bracelet engraved 'Maria', the reverse engraved '25-5-80', the bracelet composed of the central engraved panel and stylised brick-link chain, completed with a lobster clasp, in yellow metal marked '750', 18.25cm in length, 7.0 grams; a figaro-link chain bracelet, completed with a fold-over clasp, in yellow metal marked '750', 20.0cm in length, 4.0 grams; a panel bracelet, comprising a central vacant yellow metal panel, the bracelet composed of tri-colour oval engraved links and completed with a lobster clasp, marked '750' 13.25cm in length, 1.5 grams.



Please note: Unless otherwise stated, lots have been tested using an electronic tester. This is a surface test only and is not a guarantee of metal purity. **£4,000-6,000**

Fine Jewellery, Watches & Silver, 17th Dec, 2025 09:30

- 294 A wide fancy link bracelet, comprising a series of navette-shaped links, with propeller motifs and reeded details, completed with a tongue clasp and safety catches, Italian assay marks for 18ct, overall dimension 3.8 x 19.6 cm, 62.8 grams. **£3,000-5,000**



- 295 A diamond cluster pendant on chain, with an estimated total diamond weight of 3.00ct, the teardrop cluster centred with a pear-cut diamond, surrounded by graduated round brilliant-cut diamonds, and on a bail set with a marquise-cut diamond, 2.4 cm drop length, on a 38.0 cm long cable link chain, in unmarked white metal surface testing as 18ct, 6.4 grams. Please note: Unless otherwise stated, lots have been tested using an electronic tester. This is a surface test only and is not a guarantee of metal purity. **£1,000-1,500**



- 296 A diamond and sapphire trilogy ring, featuring a central claw-set emerald-cut diamond of 0.91ct, E colour and VVS2 clarity, the diamond flanked each side by a claw-set emerald-cut blue sapphire of vivid purplish-blue colour, to a platinum ring shank of D profile, the inside of the ring shank flush-set with a ruby, size M, 5.5 grams. **£1,500-2,000**



- 297 An unheated colour-change Ceylon sapphire solitaire ring, featuring an oval-cut sapphire of medium purplish-blue colour, measuring 12.2mm x 8.4mm x 8.0mm, with an estimated carat weight of 7.61ct, claw-set between triangular shoulders set with diamond accents with an estimated total weight of 0.12ct, to D-profile shank in unmarked yellow metal surface testing as 18ct, size T½, 6.6 grams. Accompanied by a verbal report from the Gemmological Certification Services confirming the colour-change sapphire to be Sri Lankan in origin, with no indications of heating. (Ref: 5786-0602) Please note: Unless otherwise stated, lots have been tested using an electronic tester. This is a surface test only and is not a guarantee of metal purity. **£3,000-5,000**



Fine Jewellery, Watches & Silver, 17th Dec, 2025 09:30

- 298 A diamond solitaire ring, composed of a round brilliant diamond, measuring approximately 8.1mm, with an estimated carat weight of 1.95ct, and an estimated colour and clarity grade H, VS, the girdle inscribed with 'Hearts on Fire 160813', in a four-prong setting leading to a D-profile shank marked '950PT', size L; 6.1 grams **£4,000-6,000**



- 299 An unheated Burmese sapphire and diamond dress ring, centred with a cushion-cut sapphire of vivid blue colour, approximately 9.6 x 8.0 x 5.6 mm, claw-set within a diamond frame, between shoulders further adorned with diamond accents and 'T' motifs channel-set with calibre-cut sapphires, estimated total diamond weight 2.35ct, the bi-coloured metal stamped '18K 750', ring head 1.8 x 1.5 cm, size N, 8.8 grams. Accompanied by an AnchorCert jewellery report, stating the sapphire to be Myanmar in origin, with no indications of heat treatment. (no.: 327355/20069890) **£12,000-14,000**



- 300 A single stone emerald-cut diamond ring, the diamond measuring approximately 8.8 x 6.6 x 4.6mm, in double four claw corner mounts, above a plain angled shank; Inscribed to the inside of the band 2.55 as stated weight and '750', size K, 4.7 grams.
Please note: This stone has been graded in its mount, and the grading is intended as an opinion only. Results are subject to change following the stone being unset. **£4,000-6,000**



- 301 A heart-shaped diamond pendant, the heart shaped brilliant-cut diamond measuring approximately 8.2mm x 7mm x 4.2mm, with an estimated carat weight of 1.42ct, claw-set in an unmarked white metal mount, to a trace link chain with bolt ring clasp marked '750', measuring approximately 46.5cm, with additional jump ring for shorter length; 3.3 grams **£2,500-3,000**



- 302 David Morris - a diamond-set flexible torque bangle, of quatrefoil design, comprising a series of graduated floral links, central segment encrusted with round brilliant-cut diamonds, with an estimated total weight of 1.65ct, white metal signed and stamped '18ct', inner diameter 5.6 cm, 42.6 grams. **£2,500-3,500**



Fine Jewellery, Watches & Silver, 17th Dec, 2025 09:30

- 303 A pearl and diamond necklace in 18ct white gold, of undulating design, featuring a large teardrop-shaped cultured pearl of 16.3 x 13.4 mm, with a diamond-set cap of foliate design, articulated centrepiece attached to segments of bar links and diamond spacers, completed with a modified box clasp signed 'Chaumet Paris', London import marks 1983, sponsor's mark 'AILd', overall length 42.0 cm, 36.8 grams. **£7,000-9,000**



- 304 Dior - a 'Deux Epices' multi-gem dress ring, composed of two bands flanking an oval-cut tourmaline, peridot and aquamarine in collets, with diamond accents and further decorated with articulated teardrop fringe to the border, signed and numbered, white metal bearing the French eagle head assay mark for 18ct, size L½, 13.6 grams.
No box no papers. **£1,000-1,500**



- 305 Bucherer - a pair of blue topaz earrings, each bezel-set with a rose-cut cushion-shaped blue topaz drop, suspended from a surmount with lever back, in yellow metal marked 'Au750', with maker's mark for Carl Bucherer, in a branded box; 3.5 grams **£800-1,200**



- 306 A pair of drop earrings set with aquamarine and topaz, the wire pendant drop claw-set with a pear-cut aquamarine, suspending from a surmount collet-set with a circular-cut topaz, hook fittings, white metal marked '750' and surface testing as 18ct, 6.0 cm drop, in a Mappin & Webb case, 6.1 grams.
Please note: Unless otherwise stated, lots have been tested using an electronic tester. This is a surface test only and is not a guarantee of metal purity. **£500-700**



- 307 Messika - a diamond-set kinetic ring in titanium, collet-set with a round brilliant-cut diamond with an estimated weight of 0.05ct, to a brush-finished flat band with a sliding aperture, signed and numbered, marked 'titanium', size P (EU size 56), 3.0 grams.
No box no papers.
RRP £720 **£200-300**



Fine Jewellery, Watches & Silver, 17th Dec, 2025 09:30

- 308 Louis Vuitton - a Colour Blossom Mini Sun ring in 18ct rose gold, set with mother-of-pearl and diamond, the blossom motif set with a polished white mother-of-pearl, and a round brilliant-cut diamond accent of 0.04ct, to an open shank, signed and numbered, French and British hallmarks, size O½ (EU size 55), 3.4 grams.
No box no papers.
RRP £2,590 **£500-700**



- 309 Cartier - a 'Love' pendant on chain, set with three brilliant-cut diamond accents, the annulet pendant engraved with screw motifs, signed and numbered, pink metal marked 'Au750', 2.5 cm wide, on a 42.0 cm fine trace link chain, 12.7 grams.
With travel pouch, no papers.
RRP £4,800 **£1,500-2,000**



- 310 Cartier - An 18ct gold 'Trinity Vendome Louis' tricolour band ring, featuring three 1.0mm wide bands of yellow, white and rose gold, the ring signed 'Cartier' and marked '977103', dated 1988, size T, 3.93 grams. **£300-500**



- 311 Boucheron - 'My First Four' quatre ring, the polished flat band of tri-coloured metal with a segment of PVD coating, signed and numbered, Swiss assay marks for 18ct, size P (EU size 56), 5.3 grams. **£500-700**



- 312 Tiffany & Co. - A pair of diamond stud earrings in platinum, with an estimated total diamond weight of 0.60ct, each containing a brilliant-cut diamond of 4.3mm in a claw setting, screw-back fittings to the reverse, signed and numbered, London 2004, 1.4 grams.

Accompanied by Tiffany & Co diamond certificates and a travelling pouch. **£300-500**



Fine Jewellery, Watches & Silver, 17th Dec, 2025 09:30

- 313 Tiffany & Co. - An Atlas Tapered bangle in silver, the closed round bangle set with Roman numerals to the cardinal points, signed and hallmarked, London 2014, inner diameter 6.5cm, 29.6 grams.
No box. No papers. **£150-200**



- 314 Tiffany & Co - A 'Diamonds by the Yard' bracelet in 18ct yellow gold, designed by Elsa Peretti, set with one round brilliant-cut diamond weighing 0.08ct, in a spectacle setting on a fine cable link chain, completed with spring-ring clasp, signed, London hallmarked, 19.0cm in length, 1.0 grams. No box. No papers. In travel pouch. **£300-500**



- 315 Tiffany & Co. - A 'Diamonds by the Yard' necklace in 18ct yellow gold, designed by Elsa Peretti, set with one round brilliant-cut diamond weighing 0.05ct, in a spectacle setting on a fine cable link chain, completed with spring-ring clasp, signed, London hallmarked, 40.0cm in length, 1.6 grams. No box. No papers. In travel pouch. **£500-700**



- 316 Tiffany & Co. - a diamond-set pendant necklace in platinum, with an estimated total diamond weight of 0.70ct, comprising seven round brilliant-cut diamonds, in collets of alternating sizes, 4.5 cm drop, on a 41.0 cm long fine cable link chain with lobster clasp, signed and London hallmarked, 4.3 grams. **£1,000-2,000**



- 317 Tiffany & Co - a diamond solitaire ring, composed of a princess-cut diamond, with a carat weight of 0.87ct, and an estimated colour and clarity grade of H, VS2, in a four-prong setting, to a knife-edge shank in white metal stamped 'PT950' and 'Tiffany & Co', size I1/2, together with branded box, outer box and bag; 4.4 grams **£2,500-3,500**



Fine Jewellery, Watches & Silver, 17th Dec, 2025 09:30

- 318 Tiffany & Co. - a 'Tiffany Soleste' double row ring, claw-set with one cushion modified brilliant-cut diamond weighing 0.45ct, surrounded by and set on the shank with bead-set round brilliant-cut diamonds weighing approximately 0.32ct total, in white metal marked 'PT950', signed and numbered, size K½, 5.3 grams.

Accompanied by a Tiffany diamond certificate, stating the principal diamond has a colour grade of F, and clarity grade VVS2.

With box and papers. **£1,500-2,000**



- 319 Christian Dior - A gold-plated necklace and earrings suite, the necklace composed of three step-cut blue and pink paste, bezel set and flanked by paste-set accents, to a flat curb link chain, clasp with maker's mark, together with a pair of matching earrings, with a step-cut blue paste, bezel-set with additional paste accents, post fitting and earring back to the reverse, not signed, in a branded box; 46.7 grams **£200-300**



- 320 Georg Jensen - A heart pendant on a hematite bead necklace, designed by Allan Scharff, comprising a stylised heart pendant threaded onto a necklace of hematite beads, each measuring 7.3mm in diameter, completed with a lobster clasp, the heart pendant stamped '925', model 247B, necklace measuring 45.0cm in length, boxed, 95.0 grams. **£200-300**



- 321 A gem-set signet ring, composed of an oval bloodstone plaque, the intaglio motif depicting a crowned lion, bezel-set in a yellow metal mount marked '9ct', size N1/2; 2.8 grams **£100-150**



- 322 A Roman carnelian intaglio ring, the oval carnelian panel carved with a female deity, possibly Justice, holding scales, with a whip in the other hand, collet-set to a later shank, unmarked bi-coloured metal surface testing as 18ct and silver, ring head 1.3cm x 1.0cm, size G½, 7.1 grams.
Please note: Unless otherwise stated, lots have been tested using an electronic tester. This is a surface test only and is not a guarantee of metal purity. **£200-300**



Fine Jewellery, Watches & Silver, 17th Dec, 2025 09:30

- 323 A Victorian gold and carnelian seal, foliate engraved seal with intaglio carved monogram, 23mm high; a further 9ct gold and chalcedony seal with a surmount of St George and the dragon, 37mm high; a modern 9ct gold and bloodstone seal in Victorian style and another set with an oval black onyx. Gross weight 29.4 grams. **£200-300**



- 324 Five yellow metal seals; including a rose coloured seal with an engraved monogram to the base plate, surface testing as 14ct, 5.66 grams; a swivel triple seal, testing as 18ct; a seal set with a bloodstone plaque, topped with a fish motif, surface testing as 9ct; a small monogram engraved seal testing as 14ct and a 19th century gilt metal seal with crest engraved intaglio. **£300-500**



- 325 A pink metal swivel seal cum locket, set to either side with a carnelian and a bloodstone; together with two 19th century seals, one with a carnelian intaglio of a classical male bust figure, a further with an intaglio monogram and a 19th century gilt metal seal. **£200-300**



- 326 A 9 carat gold and smoky quartz seal, decorated with shields; together with a further seal set with a dyed blue chalcedony, and a 19th century gilt metal seal with carnelian. (3) **£150-250**



- 327 A large collection of over forty seals, mostly 19th century. Many stone set with engraved intaglios, three desk seals and a watch key mount; also including a gilt metal chain suspending four seals and a Victorian compass fob. **£400-600**



Fine Jewellery, Watches & Silver, 17th Dec, 2025 09:30

- 328 A Victor Emmanuel III, 1918 yellow metal, Italian Rosa Croce, 50 lire coin medallion/ coin minted in support of the works of the Italian Red Cross, the obverse with enamel red cross logo and bearing the legend Novembre 1918, stamped 657, the reverse with a stylised portrayal of peace with olive branch against a background of heavy field guns, in a claw-mounted twisted yellow metal wirework frame, surface testing as 18ct, 18.5 grams combined weight, 4.5 cm overall height.
Please note: Unless otherwise stated, lots have been tested using an electronic tester. This is a surface test only and is not a guarantee of metal purity. **£800-1,200**



- 329 A collection of gentlemen's accessories and stick pins, including a cased fox and hunting motif stick pin (tests as 14 carat gold), a single stone pearl stick pin in the form of a floral sprig, a sterling silver riding crop hunting pin, several unusual stud boxes and cases, button boxes and a top hat pin cushion.
Please note: Unless otherwise stated, lots have been tested using an electronic tester. This is a surface test only and is not a guarantee of metal purity. **£200-300**



- 330 **Gucci - A Lady's Dive Wristwatch**
Reference: 136.4
Serial: 15129454
Bezel: Uni-Directional
Case Material: Stainless Steel
Case Diameter: Approximately 32mm
Dial: White, Luminous Arrow Hands
Numerals: Luminous Baton, Minute Track
Crown: Signed, Fluted
Movement: Quartz
Complication: Date Aperture at six o'clock
Strap: Stainless Steel
Inner Circumference: Approximately 16.0cm
Buckle: Signed, Stainless Steel Double Push-Button Fold-Over Clasp
Box: No
Papers: No
Gross Weight: Approximately 94.0 grams
Please note this watch has not been opened. The movement has not been checked and therefore cannot be guaranteed. No long-term tests have been performed and accuracy cannot be guaranteed. A full service is advised on all watches and pocket watches once purchased.
It is also important to note that we cannot guarantee the authenticity or originality of individual components, such as wheels, hands, crowns, crystals, screws, bracelets, and wrist bands, since subsequent repairs and restoration may have changed the original components. Also, we cannot guarantee the authenticity or originality of any engraving or re-engraving on watch cases, case backs, bracelets, straps or internal movements. **£150-250**



Fine Jewellery, Watches & Silver, 17th Dec, 2025 09:30

331

Gucci - Lady's Wristwatch

Reference: 6000.2.L

Bezel: Smooth

Year: 1990s

Case Material: Electroplated Stainless Steel

Case Diameter: Approximately 22mm

Dial: Gold-Tone, Dauphine Hands

Numerals: Black Roman Numerals

Crown: Signed, Fluted

Movement: Gucci-1 (ETA Calibre 980.003) Seven-Jewel

Quartz Movement

Strap: After-Market Brown Leather Strap

Inner Circumference: Approximately 17.0cm at smallest,
20.5cm at widest

Buckle: After-Market Gold-Plated Buckle

Box: No

Papers: No

Gross Weight: Approximately 16.0 grams

No long-term tests have been performed and accuracy cannot be guaranteed. A full service is advised on all watches and pocket watches once purchased.

It is also important to note that we cannot guarantee the authenticity or originality of individual components, such as wheels, hands, crowns, crystals, screws, bracelets, and wrist bands, since subsequent repairs and restoration may have changed the original components. Also, we cannot guarantee the authenticity or originality of any engraving or re-engraving on watch cases, case backs, bracelets, straps or internal movements. **£300-500**



Fine Jewellery, Watches & Silver, 17th Dec, 2025 09:30

332

Longines - A 9ct Gold Dress Watch

Reference: 86037 (Case marked '6037')

Serial: 6446114 (To Movement)

Year: Hallmarked Birmingham 1942

Bezel: Smooth

Case Material: 9ct Yellow Gold

Case Diameter: Approximately 30mm x 30mm

Dial: White Porcelain, Blued Plume Hands

Numerals: Arabic, Minute Track

Crown: Fluted

Movement: Longines 15-Jewel Manual Wind Movement, numbered '6446114'

Complication: Seconds Subsidiary Dial at six o'clock

Strap: After-Market Brown Leather Strap

Inner Circumference: Approximately 17.5cm at smallest, 22.0cm at widest

Buckle: After-Market Gold-Plated Buckle

Box: No

Papers: No

Gross Weight: Approximately 33.5 grams

No long-term tests have been performed and accuracy cannot be guaranteed. A full service is advised on all watches and pocket watches once purchased.

It is also important to note that we cannot guarantee the authenticity or originality of individual components, such as wheels, hands, crowns, crystals, screws, bracelets, and wrist bands, since subsequent repairs and restoration may have changed the original components. Also, we cannot guarantee the authenticity or originality of any engraving or re-engraving on watch cases, case backs, bracelets, straps or internal movements. **£200-300**



Fine Jewellery, Watches & Silver, 17th Dec, 2025 09:30

333

Omega - A 9ct Gold Dress Watch

Reference: 9945655

Serial: 32300173 (To Movement)

Year: Hallmarked Birmingham 1964

Bezel: Smooth

Case Material: 9ct Gold

Case Diameter: Approximately 16mm

Dial: Silvered, Brushed, Pointed Baton Hands

Numerals: Baton

Crown: Signed, Fluted

Movement: Omega Calibre 485 17-Jewel Manual Wind Movement, numbered '32300173'

Strap: Integral 9ct Gold Mesh Strap, with Foliate Texture

Inner Circumference: Approximately 16.5cm

Buckle: Signed, 9ct Gold Fold-Over Clasp with additional safety catch

Box: No. Accompanied by an unassociated Asprey & Co. Box

Papers: No

Gross Weight: Approximately 17.5 grams

No long-term tests have been performed and accuracy cannot be guaranteed. A full service is advised on all watches and pocket watches once purchased.

It is also important to note that we cannot guarantee the authenticity or originality of individual components, such as wheels, hands, crowns, crystals, screws, bracelets, and wrist bands, since subsequent repairs and restoration may have changed the original components. Also, we cannot guarantee the authenticity or originality of any engraving or re-engraving on watch cases, case backs, bracelets, straps or internal movements. **£400-600**



Fine Jewellery, Watches & Silver, 17th Dec, 2025 09:30

334

A 9ct Gold Dress Watch

Reference: 64348

Year: Hallmarked London 1920

Bezel: Smooth

Case Material: 9ct Yellow Gold

Case Diameter: Approximately 25mm

Dial: White Enamel, Breguet Hands

Numerals: Black Arabic, Red Arabic at twelve o'clock, Minute Track

Crown: Fluted

Movement: Swiss 15-Jewel Manual Wind Movement

Strap: After-Market Brittanica-Link Strap, marked '9ct'

Inner Circumference: Approximately 15.5cm (not expanded)

Buckle: Integral Box Clasp and additional safety catch

Box: Yes

Papers: Original Warranty (1921) and Receipt Only.

Gross Weight: Approximately 19.5 grams

No long-term tests have been performed and accuracy cannot be guaranteed. A full service is advised on all watches and pocket watches once purchased.

It is also important to note that we cannot guarantee the authenticity or originality of individual components, such as wheels, hands, crowns, crystals, screws, bracelets, and wrist bands, since subsequent repairs and restoration may have changed the original components. Also, we cannot guarantee the authenticity or originality of any engraving or re-engraving on watch cases, case backs, bracelets, straps or internal movements. **£200-300**



Fine Jewellery, Watches & Silver, 17th Dec, 2025 09:30

335

Rolex - An Art Deco Silver Wristwatch

Reference: 54810

Serial: 16

Year: Glasgow Import Marks for 1926

Bezel: Smooth, Tonneau-Form

Case Material: Silver

Case Diameter: Approximately 20mm x 20mm

Dial: Silvered, Scalloped Texture

Numerals: Black Arabic Numerals, Minute Track

Crown: Fluted

Movement: Rolex 15-Jewel Manual Wind Movement, timed six positions and for all climates

Strap: Brittanic-Link Strap, surface testing as base metal

Inner Circumference: Approximately 15cm (Not Expanded)

Buckle: None

Box: No

Papers: No

Gross Weight: Approximately 19.5 grams

No long-term tests have been performed and accuracy cannot be guaranteed. A full service is advised on all watches and pocket watches once purchased.

It is also important to note that we cannot guarantee the authenticity or originality of individual components, such as wheels, hands, crowns, crystals, screws, bracelets, and wrist bands, since subsequent repairs and restoration may have changed the original components. Also, we cannot guarantee the authenticity or originality of any engraving or re-engraving on watch cases, case backs, bracelets, straps or internal movements. **£100-200**



Fine Jewellery, Watches & Silver, 17th Dec, 2025 09:30

336

Garrard - A 9ct Gold Dress Watch

Reference: 56757

Year: Hallmarked London 1976

Bezel: Smooth

Case Material: 9ct Yellow Gold

Case Diameter: Approximately 34mm

Dial: Silvered, Pointed Baton Hands

Numerals: Arabic, Minute Track

Crown: Fluted

Movement: Unites Calibre 6325 17-Jewel Manual Wind Movement

Complication: Seconds Subsidiary Dial at six o'clock

Strap: After-Market Black Leather

Inner Circumference: Approximately 18.0cm at smallest, 22.0cm at widest

Buckle: After-Market Gold-Plated Buckle

Box: No

Papers: No

Gross Weight: Approximately 36.0 grams

Presented to E. H. Burton in 1977 in appreciation of 25 years' service for the London Brick Company. Records show E. H. Burton was a director of London Brick Landfill Ltd, a subsidiary firm of the London Brick Company Ltd. Both firms were based in Bedfordshire.

No long-term tests have been performed and accuracy cannot be guaranteed. A full service is advised on all watches and pocket watches once purchased.

It is also important to note that we cannot guarantee the authenticity or originality of individual components, such as wheels, hands, crowns, crystals, screws, bracelets, and wrist bands, since subsequent repairs and restoration may have changed the original components. Also, we cannot guarantee the authenticity or originality of any engraving or re-engraving on watch cases, case backs, bracelets, straps or internal movements. **£200-300**



Fine Jewellery, Watches & Silver, 17th Dec, 2025 09:30

337

Dunhill - An Octagonal Wristwatch

Reference: 114

Serial: 10114

Bezel: Smooth

Case Material: Stainless Steel

Case Diameter: Approximately 27mm x 32mm

Dial: Silvered, Blued Breguet Hands

Numerals: Black Arabic, Minute Track

Crown: Fluted

Movement: Dunhill (ETA Calibre 2066) 17-Jewel Manual-Wind Movement

Strap: After-Market, Black Leather

Inner Circumference: Approximately 22.0cm at widest

Buckle: Signed, Stainless Steel Buckle

Box: No

Papers: No

Gross Weight: 30.5 grams

No long-term tests have been performed and accuracy cannot be guaranteed. A full service is advised on all watches and pocket watches once purchased.

We are unable to confirm mechanical replacements or imperfections to the movement, case, dial, pendulum, separate base(s) or dome.

Watches with water-resistant cases may have been opened to examine movements; no warranties are given regarding their water resistance.

It is also important to note that we cannot guarantee the authenticity or originality of individual components, such as wheels, hands, crowns, crystals, screws, bracelets, and wrist bands, since subsequent repairs and restoration may have changed the original components. Also, we cannot guarantee the authenticity or originality of any engraving or re-engraving on watch cases, case backs, bracelets, straps or internal movements. **£400-600**



Fine Jewellery, Watches & Silver, 17th Dec, 2025 09:30

338

Tissot - A 9ct Gold Wristwatch

Reference: 1061 / 78400

Serial: 16492367

Year: Hallmarked Birmingham 1973

Bezel: Smooth

Case Material: 9ct Yellow Gold

Case Diameter: Approximately 14mm x 14mm

Dial: Cream, Silvered, Sunburst, Pointed Baton Hands

Numerals: Baton

Crown: Fluted

Movement: Tissot 17-Jewel Manual Wind Movement, numbered '16492367'

Strap: Integral Textured Mesh Strap

Inner Circumference: Approximately 17.0cm at smallest, 17.5cm at widest

Buckle: Signed, 9ct Yellow Gold Fold-Over Clasp with additional safety catch

Box: No. Accompanied by Unassociated Harrods Box

Papers: Certificate of Origin, World Service Booklet, Information Booklet and Original Purchase Receipt Only.

Gross Weight: Approximately 26.5 grams

No long-term tests have been performed and accuracy cannot be guaranteed. A full service is advised on all watches and pocket watches once purchased.

It is also important to note that we cannot guarantee the authenticity or originality of individual components, such as wheels, hands, crowns, crystals, screws, bracelets, and wrist bands, since subsequent repairs and restoration may have changed the original components. Also, we cannot guarantee the authenticity or originality of any engraving or re-engraving on watch cases, case backs, bracelets, straps or internal movements. **£500-700**



Fine Jewellery, Watches & Silver, 17th Dec, 2025 09:30

339

Bucherer - An '18K' Gold Dress Watch

Reference: 575

Bezel: Florentine Finish

Case Material: '18K'

Case Diameter: Approximately 33mm

Dial: Silvered, Sunburst, Pointed Baton Hands

Numerals: Baton

Crown: Fluted

Movement: Villeret Calibre 423 17-Jewel Manual Wind

Movement

Strap: Black Leather

Inner Circumference: Approximately 16.5cm at smallest,
19.5cm at widest

Buckle: Gold-Plated Buckle

Box: No

Papers: No

Gross Weight: Approximately 25.5 grams

No long-term tests have been performed and accuracy cannot be guaranteed. A full service is advised on all watches and pocket watches once purchased.

It is also important to note that we cannot guarantee the authenticity or originality of individual components, such as wheels, hands, crowns, crystals, screws, bracelets, and wrist bands, since subsequent repairs and restoration may have changed the original components. Also, we cannot guarantee the authenticity or originality of any engraving or re-engraving on watch cases, case backs, bracelets, straps or internal movements. **£600-800**



Fine Jewellery, Watches & Silver, 17th Dec, 2025 09:30

340 **Bueche-Girod - A 9ct Gold Dress Watch**

Year: Hallmarked London 1978
Bezel: Segmented Woven Texture
Case Material: 9ct Yellow Gold
Case Diameter: Approximately 24mm
Dial: Gold-Tone, Sunburst, Dauphine Hands
Numerals: Baton
Crown: Signed, Fluted
Movement: Bueche-Girod (ETA Calibre 2512-1) 17-Jewel
 Manual Wind Movement, adjusted in five positions
Strap: Integral Woven Mesh Strap
Inner Circumference: Approximately 17.0cm
Buckle: Signed, 9ct Gold Fold-Over Clasp
Box: Yes
Papers: No
Gross Weight: Approximately 49.5 grams
 No long-term tests have been performed and accuracy cannot be guaranteed. A full service is advised on all watches and pocket watches once purchased.
 It is also important to note that we cannot guarantee the authenticity or originality of individual components, such as wheels, hands, crowns, crystals, screws, bracelets, and wrist bands, since subsequent repairs and restoration may have changed the original components. Also, we cannot guarantee the authenticity or originality of any engraving or re-engraving on watch cases, case backs, bracelets, straps or internal movements. **£700-900**



341 **Movado - An '18Kt' Dress Watch**

Bezel: Smooth
Case Material: '18Kt'
Case Diameter: Approximately 16mm x 13mm
Dial: Silvered, Brushed, Pointed Baton Hands
Numerals: Baton
Crown: To Case Back, Fluted
Movement: Manual Wind
Strap: Integral Mesh Strap with Crosshatch Texture
Inner Circumference: Approximately 16.0cm
Buckle: Fold-Over Clasp with Crosshatch Texture
Box: No
Papers: No
Gross Weight: Approximately 37.0 grams
 Please note this watch has not been opened. The movement has not been checked and therefore cannot be guaranteed.
 No long-term tests have been performed and accuracy cannot be guaranteed. A full service is advised on all watches and pocket watches once purchased.
 It is also important to note that we cannot guarantee the authenticity or originality of individual components, such as wheels, hands, crowns, crystals, screws, bracelets, and wrist bands, since subsequent repairs and restoration may have changed the original components. Also, we cannot guarantee the authenticity or originality of any engraving or re-engraving on watch cases, case backs, bracelets, straps or internal movements. **£800-1,200**



Fine Jewellery, Watches & Silver, 17th Dec, 2025 09:30

342

Omega - An '18K' Diamond-Set Dress Watch

Serial: Indistinct

Bezel: Diamond-Set

Case Material: '18K' White Metal

Case Diameter: Approximately 14mm x 18mm

Dial: Silvered, Sunburst, Pointed Baton Hands

Numerals: Baton

Crown: Signed, Fluted

Movement: Omega Calibre 484 17-Jewel Manual Wind

Movement, numbered (indistinct)

Strap: Integral '18K' White Metal Mesh Strap, with Scrolled Engraved Texture

Inner Circumference: Approximately 17.0cm at smallest, 18.0cm at widest

Buckle: Fold-Over Clasp, with Scrolled Engraved Texture

Box: No

Papers: No

Gross Weight: Approximately 43.5 grams

No long-term tests have been performed and accuracy cannot be guaranteed. A full service is advised on all watches and pocket watches once purchased.

It is also important to note that we cannot guarantee the authenticity or originality of individual components, such as wheels, hands, crowns, crystals, screws, bracelets, and wrist bands, since subsequent repairs and restoration may have changed the original components. Also, we cannot guarantee the authenticity or originality of any engraving or re-engraving on watch cases, case backs, bracelets, straps or internal movements. **£1,500-2,000**



Fine Jewellery, Watches & Silver, 17th Dec, 2025 09:30

343

Omega - An 18ct Yellow Gold Dress Watch

Reference: 7049

Serial: 510877

Year: London Import Marks 1962

Bezel: Smooth

Case Material: 18ct Yellow Gold

Case Diameter: Approximately 18mm

Dial: Silvered, Brushed, Pointed Baton Hands

Numerals: Baton

Crown: Signed, Fluted

Movement: Omega Calibre 483 17-Jewel Manual Wind Movement, numbered '19458487'

Strap: Integral Mesh Strap, with Diagonal Striation Texture

Inner Circumference: Approximately 17.0cm

Buckle: Signed, 18ct Yellow Gold Textured Fold-Over Clasp

Box: No

Papers: No

Gross Weight: Approximately 32.5 grams

For your protection, every watch with an estimate over £1,500 is checked against the Watch Register. This is an independent company who hold the world's largest, most established, international database of lost, stolen, and fake watches, containing data compiled over 35 years - providing Dawsons' buyers with complete peace of mind.

No long-term tests have been performed and accuracy cannot be guaranteed. A full service is advised on all watches and pocket watches once purchased.

It is also important to note that we cannot guarantee the authenticity or originality of individual components, such as wheels, hands, crowns, crystals, screws, bracelets, and wrist bands, since subsequent repairs and restoration may have changed the original components. Also, we cannot guarantee the authenticity or originality of any engraving or re-engraving on watch cases, case backs, bracelets, straps or internal movements. **£1,500-2,000**



Fine Jewellery, Watches & Silver, 17th Dec, 2025 09:30

344

Omega - An '18K' Dress Watch

Reference: 7154

Serial: 671908

Bezel: Smooth, Faceted Crystal

Case Material: '18K'

Case Diameter: Approximately 14mm

Dial: Silvered, Sunburst, Pointed Baton Hands

Numerals: Baton

Crown: Signed, Fluted

Movement: Omega Calibre 650 17-Jewel Manual Wind

Movement, numbered '26083404'

Strap: Integral Signed '18k' Mesh Strap

Inner Circumference: Approximately 16.0cm

Buckle: Signed, '18K' Fold-Over Clasp

Box: No

Papers: No

Gross Weight: Approximately 23.0 grams

No long-term tests have been performed and accuracy cannot be guaranteed. A full service is advised on all watches and pocket watches once purchased.

It is also important to note that we cannot guarantee the authenticity or originality of individual components, such as wheels, hands, crowns, crystals, screws, bracelets, and wrist bands, since subsequent repairs and restoration may have changed the original components. Also, we cannot guarantee the authenticity or originality of any engraving or re-engraving on watch cases, case backs, bracelets, straps or internal movements. **£800-1,200**



Fine Jewellery, Watches & Silver, 17th Dec, 2025 09:30

345

Rolex - A 9ct Gold Trench-Style Wristwatch

Reference: 1081365

Serial: 2828

Year: London Import mark, dated 1919

Bezel: Smooth

Case Material: 9ct Gold (Outer surfaces rose-toned, inside of case yellow-toned)

Case Diameter: Approximately 27mm

Dial: Silvered (Significantly discoloured)

Numerals: Black Roman Numerals, Minute Track

Crown: Fluted

Movement: Rolex Manual Wind Movement

Strap: After-Market Brown Leather

Inner Circumference: Approximately 16.0cm at smallest, 18.5cm at widest

Buckle: After-Market Gold-Plated Buckle

Box: No

Papers: No

Gross Weight: Approximately 19.5 grams

No long-term tests have been performed and accuracy cannot be guaranteed. A full service is advised on all watches and pocket watches once purchased.

It is also important to note that we cannot guarantee the authenticity or originality of individual components, such as wheels, hands, crowns, crystals, screws, bracelets, and wrist bands, since subsequent repairs and restoration may have changed the original components. Also, we cannot guarantee the authenticity or originality of any engraving or re-engraving on watch cases, case backs, bracelets, straps or internal movements. **£200-300**



Fine Jewellery, Watches & Silver, 17th Dec, 2025 09:30

346

A 9ct Gold Dress Watch

Reference: 66340

Year: Hallmarked London 1860

Bezel: Smooth

Case Material: 9ct Yellow Gold (Inside of Case Back marked City Watch Case Co Ltd)

Case Diameter: Approximately 24mm

Dial: White Enamel

Numerals: Black Arabic Numerals, Red Arabic Numeral at twelve o'clock

Crown: Fluted

Movement: 15-Jewel Manual-Wind Movement

Strap: After-Market Brittanica-Link Strap marked '9ct'

Inner Circumference: Approximately 17.0cm

Buckle: Integral Box Clasp and additional safety clasp

Box: No

Papers: Original Warranty (Expired) Only.

Gross Weight: Approximately 19.5 grams

No long-term tests have been performed and accuracy cannot be guaranteed. A full service is advised on all watches and pocket watches once purchased.

It is also important to note that we cannot guarantee the authenticity or originality of individual components, such as wheels, hands, crowns, crystals, screws, bracelets, and wrist bands, since subsequent repairs and restoration may have changed the original components. Also, we cannot guarantee the authenticity or originality of any engraving or re-engraving on watch cases, case backs, bracelets, straps or internal movements. **£200-300**



Fine Jewellery, Watches & Silver, 17th Dec, 2025 09:30

347

Breitling - A Wings Automatic Wristwatch

Reference: B10050

Serial: 6119

Bezel: Uni-Directional

Year: Purchased 2000

Case Material: Stainless Steel

Case Diameter: Approximately 37mm

Dial: Cream, Central Hobnail Texture

Numerals: Baton, Arabic at twelve, six and nine o'clock, Minute Track

Crown: Fluted

Movement: Breitling 21 Jewel Automatic Movement (ETA Calibre 2892A8 38-Jewel Movement marked '02/A217')

Complication: Date Aperture at three o'clock

Strap: Breitling Stainless Steel Bar Link Strap

Inner Circumference: Approximately 18cm

Buckle: Signed, Stainless Steel Double Fold-Over Clasp

Box: Yes. Inner and Outer (Inner Box Hinge Broken)

Papers: International Warranty, Breitling Automatic II Booklet and Authorised Distributors Booklet Only.

Gross Weight: Approximately 153.5 grams

No long-term tests have been performed and accuracy cannot be guaranteed. A full service is advised on all watches and pocket watches once purchased.

It is also important to note that we cannot guarantee the authenticity or originality of individual components, such as wheels, hands, crowns, crystals, screws, bracelets, and wrist bands, since subsequent repairs and restoration may have changed the original components. Also, we cannot guarantee the authenticity or originality of any engraving or re-engraving on watch cases, case backs, bracelets, straps or internal movements. **£600-800**



Fine Jewellery, Watches & Silver, 17th Dec, 2025 09:30

348

Chopard - A Mille Miglia Gran Turismo XL Wristwatch

Reference: 16/8997

Serial: 1248826

Bezel: Smooth

Case Material: Stainless Steel

Case Diameter: Approximately 44mm

Dial: Black, Luminous Pointed Batons Hands

Numerals: Luminous Baton, Luminous Arabic at twelve and six o'clock, Minute Track

Crown: Signed, Fluted

Movement: Chopard Calibre 09/50 24-Jewel Automatic Movement, Adjusted to Five Positions, numbered '64924'

Complication: Date Aperture at with magnifier at three o'clock

Strap: Signed Black Rubber Strap

Inner Circumference: Approximately 19.0cm

Buckle: Signed, Stainless Steel Push-Button Fold-Over Clasp

Box: No

Papers: No

Gross Weight: Approximately 146.0 grams

No long-term tests have been performed and accuracy cannot be guaranteed. A full service is advised on all watches and pocket watches once purchased.

It is also important to note that we cannot guarantee the authenticity or originality of individual components, such as wheels, hands, crowns, crystals, screws, bracelets, and wrist bands, since subsequent repairs and restoration may have changed the original components. Also, we cannot guarantee the authenticity or originality of any engraving or re-engraving on watch cases, case backs, bracelets, straps or internal movements. **£1,000-2,000**



Fine Jewellery, Watches & Silver, 17th Dec, 2025 09:30

349

Breitling - An Avenger II Seawolf Chronometer

Reference: A17331

Serial: 1605344

Year: Purchased 1996

Bezel: Uni-Directional

Case Material: Stainless Steel

Case Diameter: Approximately 45mm

Dial: Yellow

Numerals: Arabic, Luminous Baton at six and nine o'clock, Luminous Triangle at twelve o'clock, Minute Track

Crown: Signed, Fluted

Movement: Automatic

Complication: Date Aperture at three o'clock

Strap: Signed, Black Rubber

Inner Circumference: Approximately 20.0cm

Buckle: Signed, Stainless Steel Push-Button Fold-Over Clasp

Box: Yes

Papers: Guarantee Card and Booklet Only.

Gross Weight: Approximately 192.0 grams

Please note this watch has not been opened. The movement has not been checked and therefore cannot be guaranteed. For your protection, every watch with an estimate over £1,500 is checked against the Watch Register. This is an independent company who hold the world's largest, most established, international database of lost, stolen, and fake watches, containing data compiled over 35 years - providing Dawsons' buyers with complete peace of mind.

No long-term tests have been performed and accuracy cannot be guaranteed. A full service is advised on all watches and pocket watches once purchased.

It is also important to note that we cannot guarantee the authenticity or originality of individual components, such as wheels, hands, crowns, crystals, screws, bracelets, and wrist bands, since subsequent repairs and restoration may have changed the original components. Also, we cannot guarantee the authenticity or originality of any engraving or re-engraving on watch cases, case backs, bracelets, straps or internal movements. **£1,500-2,000**



Fine Jewellery, Watches & Silver, 17th Dec, 2025 09:30

350

Bremont - An Arrow Wristwatch

Reference: Arrow R-S

Serial: 51411

Year: Purchased 2021

Bezel: Smooth

Case Material: Stainless Steel

Case Diameter: Approximately 42mm

Dial: Black, Luminous Baton Hands

Numerals: Arabic, Minute Track

Crown: Signed, Fluted, One Chronograph Pusher

Movement: BE-51AE 27-Jewel Automatic Movement

Complication: Chronograph Centre Seconds, Date Aperture at six o'clock, 30-Minute Subsidiary Dial at three o'clock, Seconds Subsidiary Dial at nine o'clock

Strap: Nato Grey Striped Strap

Inner Circumference: Approximately 16cm at smallest, 26cm at widest

Buckle: Signed Stainless Steel Buckle

Box: Travel Case and Blue Leather Pouch with Outer Box Only.

Papers: International Warranty Booklet, Warranty Registration Card, Chronometers Booklet, ISO 3159 Test Certificate Only.

Gross Weight: Approximately 121.0 grams

No long-term tests have been performed and accuracy cannot be guaranteed. A full service is advised on all watches and pocket watches once purchased.

It is also important to note that we cannot guarantee the authenticity or originality of individual components, such as wheels, hands, crowns, crystals, screws, bracelets, and wrist bands, since subsequent repairs and restoration may have changed the original components. Also, we cannot guarantee the authenticity or originality of any engraving or re-engraving on watch cases, case backs, bracelets, straps or internal movements. **£1,000-1,500**



Fine Jewellery, Watches & Silver, 17th Dec, 2025 09:30

- 351 **Bremont - A Rare Supermarine Royal Mews Platinum Jubilee Wristwatch**
Reference: S300
Serial: 37/50
Year: Purchased September 2021
Bezel: Uni-Directional
Case Material: Stainless Steel
Case Diameter: Approximately 40mm
Dial: Black, Pointed Hands, Dial stamped with Platinum Jubilee and Royal Insignia
Numerals: Baton, Arabic at twelve o'clock, Minute Track to Rehaut
Crown: Signed, Screw Down, Fluted
Movement: Automatic
Complication: Date Aperture at three o'clock
Strap: Signed, Brown Leather
Inner Circumference: Approximately 16.5cm at smallest, 20.0cm at widest
Buckle: Signed, Stainless Steel, Push-Button Double Fold-Over Clasp
Box: Yes. Pouch and Outer Box.
Papers: Yes. International Warranty Card, ISO 3159 Test Certificate, Chronometers International Warranty Booklet, Supermarine S300/301 Technical Notes Booklet, Order Receipt & Welcome Booklet Only.
Gross Weight: Approximately 107.5 grams
 For your protection, every watch with an estimate over £1,500 is checked against the Watch Register. This is an independent company who hold the world's largest, most established, international database of lost, stolen, and fake watches, containing data compiled over 35 years - providing Dawsons' buyers with complete peace of mind.
 No long-term tests have been performed and accuracy cannot be guaranteed. A full service is advised on all watches and pocket watches once purchased.
 It is also important to note that we cannot guarantee the authenticity or originality of individual components, such as wheels, hands, crowns, crystals, screws, bracelets, and wrist bands, since subsequent repairs and restoration may have changed the original components. Also, we cannot guarantee the authenticity or originality of any engraving or re-engraving on watch cases, case backs, bracelets, straps or internal movements. **£2,000-3,000**



Fine Jewellery, Watches & Silver, 17th Dec, 2025 09:30

352

Breitling - A Chronomat Wristwatch

Reference: 808/217012

Serial: 1132012

Year: circa 1960s

Bezel: Rotating (Deficient)

Case Material: Stainless Steel

Case Diameter: Approximately

Dial: White, Dauphine Hands (Warped), Rehaut Deficient

Numerals: Baton, Minute Track

Crown: Signed, Fluted, Two Chronograph Pushers

Movement: Breitling (Venus Base Calibre 175) 17-Jewel
Manual Wind Movement

Complication: 45-Minute Subsidiary Dial at three o'clock,
Seconds Subsidiary Dial at nine o'clock, Centre Chronograph
Seconds

Strap: After-Market Stainless Steel Mesh Strap

Inner Circumference: Approximately 19.0cm

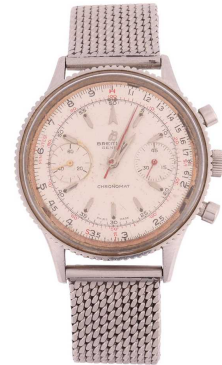
Buckle: After-Market Stainless Steel Fold-Over Clasp

Box: No

Papers: No

Gross Weight: Approximately 75.5 grams

Please note: Unless otherwise stated, lots have been tested
using an electronic tester. This is a surface test only and is not
a guarantee of metal purity. **£1,000-1,500**



Fine Jewellery, Watches & Silver, 17th Dec, 2025 09:30

- 353 **TAG Heuer - A Carrera Calibre 6 Heritage Wristwatch**
Reference: WAS2111
Serial: RAJ1966
Bezel: Smooth
Year: Purchased 2014
Case Material: Stainless Steel
Case Diameter: Approximately 38mm
Dial: Silvered, Scalloped, Sectioned, Blue Sword Hands
Numerals: Blue, Arabic, Minute Track to Rehaut
Crown: Signed, Fluted
Movement: TAG Heuer Calibre 6 (ETA Calibre 2895-2) 27-Jewel Automatic Movement, marked 'V8ZP1'
Complication: Seconds Subsidiary Dial and Date Aperture at six o'clock
Strap: Signed, Black Leather
Inner Circumference: Approximately 15.0cm
Buckle: Signed, Push-Button Fold-Over Clasp
Box: Yes
Papers: Guarantee Card, Instruction Booklet and Purchase Receipt Only.
Gross Weight: Approximately 76.0 grams
 No long-term tests have been performed and accuracy cannot be guaranteed. A full service is advised on all watches and pocket watches once purchased.
 It is also important to note that we cannot guarantee the authenticity or originality of individual components, such as wheels, hands, crowns, crystals, screws, bracelets, and wrist bands, since subsequent repairs and restoration may have changed the original components. Also, we cannot guarantee the authenticity or originality of any engraving or re-engraving on watch cases, case backs, bracelets, straps or internal movements. **£400-600**



Fine Jewellery, Watches & Silver, 17th Dec, 2025 09:30

354

Dietrich - An Organic Time Wristwatch

Reference: OT-3

Serial: 001014757

Year: Contemporary

Bezel: Smooth, Screw-Detail

Case Material: Brushed Steel

Case Diameter: Approximately 45mm x 45mm

Dial: Grey Skeleton Dial with Four Layers, Luminous Hands

Numerals: Baton, Arabic, Minute Track

Crown: Signed, Fluted

Movement: Miyota 21-Jewel Automatic Movement

Complication: Subsidiary Seconds Dial at four o'clock, 24-Hour Counter at ten o'clock

Strap: Black Nylon

Inner Circumference: Approximately 16.0cm at smallest, 22.0cm at widest

Buckle: Coated Stainless Steel Buckle

Box: Yes

Papers: Guarantee Card (Unsigned) and Information Booklet Only.

Gross Weight: Approximately 130.0 grams

No long-term tests have been performed and accuracy cannot be guaranteed. A full service is advised on all watches and pocket watches once purchased.

It is also important to note that we cannot guarantee the authenticity or originality of individual components, such as wheels, hands, crowns, crystals, screws, bracelets, and wrist bands, since subsequent repairs and restoration may have changed the original components. Also, we cannot guarantee the authenticity or originality of any engraving or re-engraving on watch cases, case backs, bracelets, straps or internal movements. **£300-500**



Fine Jewellery, Watches & Silver, 17th Dec, 2025 09:30

355

Jaeger-LeCoultre - A Chrome-Plated Wristwatch

Reference: 540359

Serial: 657453 (To Movement)

Bezel: Smooth

Case Material: Chrome-Plated Base Metal (Worn)

Case Diameter: Approximately 32mm

Dial: Silvered (Discoloured), Blued Luminous Lozenge Hands

Numerals: Arabic, Minute Track

Crown: Fluted

Movement: Jaeger-LeCoultre Calibre P469/C Manual Wind Movement, numbered '657453'

Complication: Seconds Subsidiary Dial at six o'clock

Strap: After-Market Black Leather

Inner Circumference: Approximately 17.0cm at smallest, 21.0cm at widest

Buckle: After-Market Gold-Plated Buckle

Box: No

Papers: No

Gross Weight: Approximately 32.5 grams

No long-term tests have been performed and accuracy cannot be guaranteed. A full service is advised on all watches and pocket watches once purchased.

It is also important to note that we cannot guarantee the authenticity or originality of individual components, such as wheels, hands, crowns, crystals, screws, bracelets, and wrist bands, since subsequent repairs and restoration may have changed the original components. Also, we cannot guarantee the authenticity or originality of any engraving or re-engraving on watch cases, case backs, bracelets, straps or internal movements. **£400-600**



Fine Jewellery, Watches & Silver, 17th Dec, 2025 09:30

356

Rolex - An Oyster Perpetual Datejust

Reference: 6605

Serial: 279349

Year: Early 1940s

Bezel: Fluted

Case Material: Bi-Metal

Case Diameter: Approximately 36mm

Dial: Black

Numerals: Baton, Minute Track, Rolex Coronet at twelve o'clock

Crown: Rolex Twinlock Crown

Movement: Automatic

Complication: Date Aperture with Cyclops Magnifier at three o'clock

Strap: Rolex Oyster Clasp, marked '558' and '78360'

Inner Circumference: Approximately 18cm

Buckle: Rolex Stainless Steel Oyster Fold-Over Clasp, marked 'L9' and '78360'

Box: No

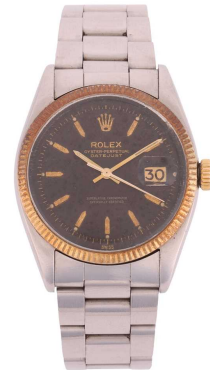
Papers: Rolex 1988 Guarantee Paper and Rolex 1989 Service Invoice Only.

Gross Weight: Approximately 96.5 grams

Please note this watch has not been opened. The movement has not been checked and therefore cannot be guaranteed. For your protection, every watch with an estimate over £1,500 is checked against the Watch Register. This is an independent company who hold the world's largest, most established, international database of lost, stolen, and fake watches, containing data compiled over 35 years - providing Dawsons' buyers with complete peace of mind.

No long-term tests have been performed and accuracy cannot be guaranteed. A full service is advised on all watches and pocket watches once purchased.

It is also important to note that we cannot guarantee the authenticity or originality of individual components, such as wheels, hands, crowns, crystals, screws, bracelets, and wrist bands, since subsequent repairs and restoration may have changed the original components. Also, we cannot guarantee the authenticity or originality of any engraving or re-engraving on watch cases, case backs, bracelets, straps or internal movements. **£2,000-3,000**



Fine Jewellery, Watches & Silver, 17th Dec, 2025 09:30

357

Rolex - An Electroplated Oyster Perpetual Date

Reference: 15505

Serial: 8692894

Year: 1984

Bezel: Smooth

Case Material: Electroplated Stainless Steel

Case Diameter: Approximately 44mm

Dial: Gold-Tone, Sunburst, Baton Hands

Numerals: Baton, Rolex Coronet at twelve o'clock, Minute Track

Crown: Rolex Twinlock

Movement: Automatic

Complication: Date Aperture with Cyclops Magnifier at three o'clock

Strap: Electroplated Stainless Steel Oyster Strap, numbered '457'

Inner Circumference: Approximately 17.0cm

Buckle: Signed, Electroplated Stainless Steel Fold-Over Clasp, marked '78351'

Box: Yes

Papers: Yes. Guarantee Paper, Rolex Oyster Booklet and Date Chart Only.

Gross Weight: Approximately 102.0 grams

Please note this watch has not been opened. The movement has not been checked and therefore cannot be guaranteed.

For your protection, every watch with an estimate over £1,500 is checked against the Watch Register. This is an independent company who hold the world's largest, most established, international database of lost, stolen, and fake watches, containing data compiled over 35 years - providing Dawsons' buyers with complete peace of mind.

No long-term tests have been performed and accuracy cannot be guaranteed. A full service is advised on all watches and pocket watches once purchased.

It is also important to note that we cannot guarantee the authenticity or originality of individual components, such as wheels, hands, crowns, crystals, screws, bracelets, and wrist bands, since subsequent repairs and restoration may have changed the original components. Also, we cannot guarantee the authenticity or originality of any engraving or re-engraving on watch cases, case backs, bracelets, straps or internal movements. **£2,000-3,000**



Fine Jewellery, Watches & Silver, 17th Dec, 2025 09:30

358

Longines - A 9ct Gold Dress Watch

Reference: 14045

Year: Hallmarked London 1960

Bezel: Smooth

Case Material: 9ct Yellow Gold

Case Diameter: Approximately 32mm

Dial: Silvered, Sunburst, Pointed Baton Hands

Numerals: Baton

Crown: Fluted

Movement: Longines Calibre 19.4 17-Jewel Manual Wind

Movement, numbered '12604644'

Complication: Seconds Subsidiary Dial at six o'clock

Strap: Integral Mesh Strap

Inner Circumference: Approximately 19.5cm

Buckle: Signed Fold-Over Clasp

Box: No

Papers: No

Gross Weight: Approximately 58.5 grams

No long-term tests have been performed and accuracy cannot be guaranteed. A full service is advised on all watches and pocket watches once purchased.

It is also important to note that we cannot guarantee the authenticity or originality of individual components, such as wheels, hands, crowns, crystals, screws, bracelets, and wrist bands, since subsequent repairs and restoration may have changed the original components. Also, we cannot guarantee the authenticity or originality of any engraving or re-engraving on watch cases, case backs, bracelets, straps or internal movements. **£1,000-1,500**



Fine Jewellery, Watches & Silver, 17th Dec, 2025 09:30

359

Longines - An '18K' Dress Watch

Reference: 5504.994

Serial: 15479879

Year: circa 1970s

Bezel: Smooth and Fluted

Case Material: 18K (Case stamped with Swiss Helvetia Head stamp indicating 18ct)

Case Diameter: Approximately 32mm x 30mm

Dial: Black, Pointed Baton Hands

Numerals: Gem-Set, Dotted Minute Track

Crown: Fluted, Blue Cabochon

Movement: Longines Calibre L 994.1 25-Jewel Automatic Movement, numbered '54510445'

Complication: Date Aperture at three o'clock

Strap: Integral Mesh-Link Strap with Planished Texture

Inner Circumference: Approximately 17.0cm at smallest, 17.5cm at widest

Buckle: Signed Fold-Over Buckle with Planished Texture, stamped '750'

Box: Goldsmiths Box Only.

Papers: No

Gross Weight: Approximately 88.5 grams

For your protection, every watch with an estimate over £1,500 is checked against the Watch Register. This is an independent company who hold the world's largest, most established, international database of lost, stolen, and fake watches, containing data compiled over 35 years - providing Dawsons' buyers with complete peace of mind.

No long-term tests have been performed and accuracy cannot be guaranteed. A full service is advised on all watches and pocket watches once purchased.

It is also important to note that we cannot guarantee the authenticity or originality of individual components, such as wheels, hands, crowns, crystals, screws, bracelets, and wrist bands, since subsequent repairs and restoration may have changed the original components. Also, we cannot guarantee the authenticity or originality of any engraving or re-engraving on watch cases, case backs, bracelets, straps or internal movements. **£2,500-3,500**



Fine Jewellery, Watches & Silver, 17th Dec, 2025 09:30

360

Corum - An '18K' Dress Watch

Bezel: Smooth

Case Material: '18K'

Case Diameter: Approximately 32mm

Dial: Gold-Tone, Sunburst, Crosshair, Pointed Baton Hands

Numerals: Baton

Crown: Fluted

Movement: Manual Wind

Strap: Integral Mesh Strap

Inner Circumference: Approximately 17.5cm

Buckle: 18ct Yellow Gold Florentine Finish Fold-Over Clasp

Box: Yes

Papers: No

Gross Weight: Approximately 57.0 grams

Please note this watch has not been opened. The movement has not been checked and therefore cannot be guaranteed. For your protection, every watch with an estimate over £1,500 is checked against the Watch Register. This is an independent company who hold the world's largest, most established, international database of lost, stolen, and fake watches, containing data compiled over 35 years - providing Dawsons' buyers with complete peace of mind.

No long-term tests have been performed and accuracy cannot be guaranteed. A full service is advised on all watches and pocket watches once purchased.

It is also important to note that we cannot guarantee the authenticity or originality of individual components, such as wheels, hands, crowns, crystals, screws, bracelets, and wrist bands, since subsequent repairs and restoration may have changed the original components. Also, we cannot guarantee the authenticity or originality of any engraving or re-engraving on watch cases, case backs, bracelets, straps or internal movements. **£1,500-2,000**



Fine Jewellery, Watches & Silver, 17th Dec, 2025 09:30

- 361 **Montblanc - A Heritage Spirit Moonphase Wristwatch**
Reference: 7321
Serial: PLBD3ZW1
Year: Contemporary
Bezel: Smooth
Case Material: Stainless Steel
Case Diameter: Approximately 40mm
Dial: Silvered, Sunburst, Dauphine Hands
Numerals: Baton, Roman at twelve o'clock
Crown: Signed, Fluted
Movement: Montblanc Calibre MB 2914 25-Jewel Automatic Movement
Complication: Moonphase and Date Wheel at six o'clock
Strap: Stainless Steel
Inner Circumference: Approximately 20.0cm
Buckle: Signed, Stainless Steel Push-Button Fold-Over Clasp
Box: Yes
Papers: Guarantee Certificate and Service Guide Only.
Gross Weight: Approximately 138.0 grams.
No long-term tests have been performed and accuracy cannot be guaranteed. A full service is advised on all watches and pocket watches once purchased.
It is also important to note that we cannot guarantee the authenticity or originality of individual components, such as wheels, hands, crowns, crystals, screws, bracelets, and wrist bands, since subsequent repairs and restoration may have changed the original components. Also, we cannot guarantee the authenticity or originality of any engraving or re-engraving on watch cases, case backs, bracelets, straps or internal movements. **£1,200-1,800**



Fine Jewellery, Watches & Silver, 17th Dec, 2025 09:30

362

Omega - A Constellation Quadra Wristwatch

Reference: 885.1201

Serial: 58255326

Bezel: Diamond-Set

Year: circa 2000

Case Material: Stainless Steel

Case Diameter: Approximately 30mm x 34mm

Dial: Cream Enamel

Numerals: Arabic at twelve, four and eight o'clock, Diamond at one, five, seven and eleven o'clock, Baton, Minute Track

Crown: Signed, Fluted, Two Chronograph Pushers

Movement: Omega Calibre 5200 23-Jewel Quartz Movement

Complication: Ten-Hour subsidiary dial at two o'clock, Seconds subsidiary dial at six o'clock, 30-Minute subsidiary dial at ten o'clock

Strap: Signed Brown Leather

Inner Circumference: Approximately 18cm at widest

Buckle: Signed, Stainless Steel Push-Button Fold-Over Clasp

Box: No

Papers: No

Gross Weight: Approximately 63.0 grams

No long-term tests have been performed and accuracy cannot be guaranteed. A full service is advised on all watches and pocket watches once purchased.

It is also important to note that we cannot guarantee the authenticity or originality of individual components, such as wheels, hands, crowns, crystals, screws, bracelets, and wrist bands, since subsequent repairs and restoration may have changed the original components. Also, we cannot guarantee the authenticity or originality of any engraving or re-engraving on watch cases, case backs, bracelets, straps or internal movements. **£400-600**



Fine Jewellery, Watches & Silver, 17th Dec, 2025 09:30

363 Omega - A Gentleman's Art Deco Wristwatch

Year: circa 1935

Bezel: Smooth

Case Material: Yellow Metal (Case marked with Swiss Squirrel mark indicating 14ct, stamped in Geneva)

Case Diameter: Approximately 20mm x 30mm

Dial: Silvered, Blued Pointed Baton Hands (Luminescence No Longer Active)

Numerals: Baton, Arabic at Twelve, Three, Nine o'clock, Minute Track

Crown: Fluted

Movement: Manual Wind

Complication: Seconds Subsidiary Dial at six o'clock

Strap: After-Market Brown Leather Strap

Inner Circumference: Approximately 17.0cm at smallest, 21.0cm at widest

Buckle: After-Market Gold-Plated Buckle

Box: No

Papers: No

Gross Weight: Approximately 28.0 grams

Please note this watch has not been opened. The movement has not been checked and therefore cannot be guaranteed. No long-term tests have been performed and accuracy cannot be guaranteed. A full service is advised on all watches and pocket watches once purchased.

It is also important to note that we cannot guarantee the authenticity or originality of individual components, such as wheels, hands, crowns, crystals, screws, bracelets, and wrist bands, since subsequent repairs and restoration may have changed the original components. Also, we cannot guarantee the authenticity or originality of any engraving or re-engraving on watch cases, case backs, bracelets, straps or internal movements. **£300-500**



Fine Jewellery, Watches & Silver, 17th Dec, 2025 09:30

364

Omega - A Seamaster Wristwatch

Reference: 515.001 / 535.001

Serial: 23451418 (To Movement)

Bezel: Smooth

Case Material: Stainless Steel

Case Diameter: Approximately 22mm

Dial: Silvered, Brushed, Pointed Baton Hands

Numerals: Baton, Minute Track

Crown: Signed, Fluted

Movement: Omega Calibre 630 17-Jewel Manual Wind Movement, numbered '23451418', Adjusted to Two Positions

Strap: After-Market Black Leather

Inner Circumference: Approximately 15.0cm at smallest, 18.5cm at widest

Buckle: After-Market Chrome-Plated Buckle

Box: Yes

Papers: No

Gross Weight: Approximately 13.5 grams

No long-term tests have been performed and accuracy cannot be guaranteed. A full service is advised on all watches and pocket watches once purchased.

It is also important to note that we cannot guarantee the authenticity or originality of individual components, such as wheels, hands, crowns, crystals, screws, bracelets, and wrist bands, since subsequent repairs and restoration may have changed the original components. Also, we cannot guarantee the authenticity or originality of any engraving or re-engraving on watch cases, case backs, bracelets, straps or internal movements. **£200-300**



Fine Jewellery, Watches & Silver, 17th Dec, 2025 09:30

365

Bulova - An Accutron Wristwatch

Reference: 3179

Serial: H897135

Year: circa 1970

Bezel: Smooth, Electroplated

Case Material: Stainless Steel, Gold Electroplated Bezel,
Rolled Gold Case Back

Case Diameter: Approximately 34mm x 34mm

Dial: Gold-Tone, Brushed

Numerals: Baton, Minute Track

Crown: Signed, Fluted

Movement: Bulova Calibre 2182 13-Jewel Electromechanical
Movement

Complication: Day & Date Aperture at three o'clock

Strap: After-Market Black Leather Strap

Inner Circumference: Approximately 21.0cm at widest

Buckle: Signed, Gold-Plated Buckle

Box: Yes

Papers: No

Gross Weight: Approximately 34.5 grams

No long-term tests have been performed and accuracy cannot be guaranteed. A full service is advised on all watches and pocket watches once purchased.

It is also important to note that we cannot guarantee the authenticity or originality of individual components, such as wheels, hands, crowns, crystals, screws, bracelets, and wrist bands, since subsequent repairs and restoration may have changed the original components. Also, we cannot guarantee the authenticity or originality of any engraving or re-engraving on watch cases, case backs, bracelets, straps or internal movements. **£150-250**



Fine Jewellery, Watches & Silver, 17th Dec, 2025 09:30

366

Smiths - A 9ct Yellow Gold Wristwatch

Reference: 84226

Serial: C447205 (To Movement)

Year: Hallmarked Edinburgh 1957

Bezel: Smooth

Case Material: 9ct Yellow Gold

Case Diameter: Approximately 32mm

Dial: Silvered, Cream

Numerals: Arabic Even Numerals, Baton Odd Numerals,
Minute Track

Crown: Fluted

Movement: 15-Jewel Manual-Wind Movement, numbered
'C447205'

Complication: Seconds Subsidiary Dial at six o'clock

Strap: After-Market Rolled-Gold Expandable Strap

Inner Circumference: Approximately 15.0cm (Not Expanded)

Buckle: None

Box: No

Papers: No

Gross Weight: Approximately 49.0 grams

No long-term tests have been performed and accuracy cannot be guaranteed. A full service is advised on all watches and pocket watches once purchased.

It is also important to note that we cannot guarantee the authenticity or originality of individual components, such as wheels, hands, crowns, crystals, screws, bracelets, and wrist bands, since subsequent repairs and restoration may have changed the original components. Also, we cannot guarantee the authenticity or originality of any engraving or re-engraving on watch cases, case backs, bracelets, straps or internal movements. **£150-250**



Fine Jewellery, Watches & Silver, 17th Dec, 2025 09:30

367

Rovina - A Stainless Steel Wristwatch

Reference: 51110G1B

Bezel: Smooth

Case Material: Stainless Steel

Case Diameter: Approximately 40mm

Dial: Grey, Basket-Weave Texture, Luminous Pointed Hands

Numerals: Arabic

Crown: Fluted

Movement: TT 73350B Quartz Movement

Complication: Date Aperture at three o'clock, Seconds

Subsidiary Dial at six o'clock, Additional Aperture at Twelve o'clock

Strap: Oyster-Style Stainless Steel Strap

Inner Circumference: Approximately 20.0cm

Buckle: Stainless Steel Push-Button Double Fold-Over Clasp

Box: Yes

Papers: No

Gross Weight: Approximately 187.0 grams

No long-term tests have been performed and accuracy cannot be guaranteed. A full service is advised on all watches and pocket watches once purchased.

It is also important to note that we cannot guarantee the authenticity or originality of individual components, such as wheels, hands, crowns, crystals, screws, bracelets, and wrist bands, since subsequent repairs and restoration may have changed the original components. Also, we cannot guarantee the authenticity or originality of any engraving or re-engraving on watch cases, case backs, bracelets, straps or internal movements. **£150-250**



Fine Jewellery, Watches & Silver, 17th Dec, 2025 09:30

368 Asprey - A Dress Watch

Year: circa 1960

Bezel: Smooth

Case Material: Surface Testing as 9ct

Case Diameter: Approximately 34mm

Dial: Cream, Linen Texture

Numerals: Baton

Crown: Fluted

Movement: Automatic

Strap: Brown Leather Strap

Inner Circumference: Approximately 17.0cm at smallest,
20.5cm at widest

Buckle: Gold-Plated Buckle

Box: No

Papers: No

Gross Weight: Approximately 33.0 grams

Please note this watch has not been opened. The movement has not been checked and therefore cannot be guaranteed. No long-term tests have been performed and accuracy cannot be guaranteed. A full service is advised on all watches and pocket watches once purchased.

It is also important to note that we cannot guarantee the authenticity or originality of individual components, such as wheels, hands, crowns, crystals, screws, bracelets, and wrist bands, since subsequent repairs and restoration may have changed the original components. Also, we cannot guarantee the authenticity or originality of any engraving or re-engraving on watch cases, case backs, bracelets, straps or internal movements. **£200-300**



Fine Jewellery, Watches & Silver, 17th Dec, 2025 09:30

369

Cartier

Must de Cartier Vendome

Reference: 590003

Serial: 035149

Bezel: Smooth

Year: circa 2003

Case Material: Gold-Plated

Case Diameter: Approximately 30mm

Dial: Cream Enamel, Signed at seven o'clock, Blue Sword Hands

Numerals: Black Roman Numerals, Minute Track

Crown: Fluted (Blue Cabochon Deficient)

Movement: Cartier Calibre 81 Nine-Jewel Quartz Movement

Strap: Brown Leather

Inner Circumference: Approximately 21.5cm at widest

Buckle: Gold-Plated

Box: No

Papers: No

Gross Weight: Approximately 26.0 grams

No long-term tests have been performed and accuracy cannot be guaranteed. A full service is advised on all watches and pocket watches once purchased.

The online condition report may not mention mechanical replacements or imperfections to the movement, case, dial, pendulum, separate base(s) or dome.

Watches with water-resistant cases may have been opened to examine movements, but no warranties are given regarding their water resistance.

It is also important to note that we cannot guarantee the authenticity or originality of individual components, such as wheels, hands, crowns, crystals, screws, bracelets, and wrist bands, since subsequent repairs and restoration may have changed the original components. Also, we cannot guarantee the authenticity or originality of any engraving or re-engraving on watch cases, case backs, bracelets, straps or internal movements. **£300-500**



Fine Jewellery, Watches & Silver, 17th Dec, 2025 09:30

370

Omega - A Constellation Wristwatch

Reference: 396.1070

Serial: 396.1080 / 09586905

Bezel: Smooth, Black Enamelled Roman Numerals

Case Material: Stainless Steel

Case Diameter: Approximately 32mm

Dial: Cream, Silvered, Blued Baton Hands with White Insert

Numerals: Dot, Minute Track

Crown: Signed, Fluted

Movement: Omega Calibre 1441 (ETA Calibre 255.561) Six-Jewel Quartz Movement

Complication: Date Aperture at three o'clock

Strap: Integral Stainless Steel Strap

Inner Circumference: Approximately 18.0cm

Buckle: Signed, Stainless Steel Push-Button Fold-Over Clasp, marked '1448/431'

Box: No

Papers: No

Gross Weight: Approximately 69.0 grams

No long-term tests have been performed and accuracy cannot be guaranteed. A full service is advised on all watches and pocket watches once purchased.

It is also important to note that we cannot guarantee the authenticity or originality of individual components, such as wheels, hands, crowns, crystals, screws, bracelets, and wrist bands, since subsequent repairs and restoration may have changed the original components. Also, we cannot guarantee the authenticity or originality of any engraving or re-engraving on watch cases, case backs, bracelets, straps or internal movements. **£300-500**



Fine Jewellery, Watches & Silver, 17th Dec, 2025 09:30

371

Omega - A 9ct Yellow Gold Dress Watch

Reference: 165/6-5003

Serial: 447820

Year: Hallmarked Birmingham 1966

Bezel: Smooth

Case Material: 9ct Yellow Gold

Case Diameter: Approximately 34mm

Dial: Champagne, Sunburst, Dauphine Hands

Numerals: Baton, Minute Track

Crown: Signed, Fluted

Movement: Omega Calibre 561 24-Jewel Automatic Movement, numbered '21262996' and adjusted to five positions and temperature

Complication: Date Aperture at three o'clock

Strap: After-Market Black Leather Strap

Inner Circumference: Approximately 17.0cm at smallest, 20.5cm at widest

Buckle: After-Market Gold-Plated Buckle

Box: No

Papers: No

Gross Weight: Approximately 40.5 grams

No long-term tests have been performed and accuracy cannot be guaranteed. A full service is advised on all watches and pocket watches once purchased.

It is also important to note that we cannot guarantee the authenticity or originality of individual components, such as wheels, hands, crowns, crystals, screws, bracelets, and wrist bands, since subsequent repairs and restoration may have changed the original components. Also, we cannot guarantee the authenticity or originality of any engraving or re-engraving on watch cases, case backs, bracelets, straps or internal movements. **£300-500**



Fine Jewellery, Watches & Silver, 17th Dec, 2025 09:30

372

Omega - A Lady's 9ct Gold Dress Watch

Reference: 52964

Serial: 365191

Year: Hallmarked Birmingham 1950

Bezel: Smooth

Case Material: 9ct Yellow Gold

Case Diameter: Approximately 15mm x 21mm

Dial: Silvered, Leaf Hands

Numerals: Arabic, Baton at Twelve, Three, Six & Nine o'clock

Crown: Fluted

Movement: Manual Wind

Strap: Black Cord & Leather Strap

Inner Circumference: Approximately 15.5cm at smallest, 18.5cm at widest

Buckle: Gold-Plated Buckle

Box: No

Papers: No

Gross Weight: Approximately 13.5 grams

Please note this watch has not been opened. The movement has not been checked and therefore cannot be guaranteed. No long-term tests have been performed and accuracy cannot be guaranteed. A full service is advised on all watches and pocket watches once purchased.

It is also important to note that we cannot guarantee the authenticity or originality of individual components, such as wheels, hands, crowns, crystals, screws, bracelets, and wrist bands, since subsequent repairs and restoration may have changed the original components. Also, we cannot guarantee the authenticity or originality of any engraving or re-engraving on watch cases, case backs, bracelets, straps or internal movements. **£150-250**



Fine Jewellery, Watches & Silver, 17th Dec, 2025 09:30

- 373 **Omega - An 18ct Gold Dress watch on a 9ct Gold Strap**
Reference: 511.122
Serial: 20833917 (To Movement)
Bezel: Smooth
Case Material: 18ct Yellow Gold
Case Diameter: Approximately 18mm
Dial: Champagne, Sunburst
Numerals: Baton
Crown: Signed, Fluted
Movement: Omega Calibre 620 17-Jewel Manual Wind
Movement, adjusted to two positions and numbered 20833917
Strap: 9ct Brick-Link Strap with Linear Texture
Inner Circumference: Approximately 15.0cm
Buckle: 9ct Fold-Over Clasp
Box: No
Papers: No
Gross Weight: Approximately 22.0 grams
No long-term tests have been performed and accuracy cannot be guaranteed. A full service is advised on all watches and pocket watches once purchased.
It is also important to note that we cannot guarantee the authenticity or originality of individual components, such as wheels, hands, crowns, crystals, screws, bracelets, and wrist bands, since subsequent repairs and restoration may have changed the original components. Also, we cannot guarantee the authenticity or originality of any engraving or re-engraving on watch cases, case backs, bracelets, straps or internal movements. **£300-500**



Fine Jewellery, Watches & Silver, 17th Dec, 2025 09:30

374

Universal Geneve - An '18K' Dress Watch

Reference: 109.225

Serial: 1126288

Bezel: Smooth

Case Material: '18K' (Case stamped with Swiss Helvetia Head stamp indicating 18ct)

Case Diameter: Approximately 28mm x 28mm

Dial: Gold-Tone, Silvered, Pointed Baton Hands

Numerals: Baton, Arabic Even Numerals, Minute Track

Crown: Fluted

Movement: Universal Geneve Calibre 264 Jewelled Manual Wind Movement, numbered '187892'

Complication: Seconds Subsidiary Dial at six o'clock

Strap: After-Market Brown Leather Strap

Inner Circumference: Approximately 17.0cm at smallest, 20.5cm at widest

Buckle: After-Market Gold-Plated Buckle (Deficient - Will require replacement)

Box: No

Papers: No

Gross Weight: Approximately 37.5 grams

No long-term tests have been performed and accuracy cannot be guaranteed. A full service is advised on all watches and pocket watches once purchased.

It is also important to note that we cannot guarantee the authenticity or originality of individual components, such as wheels, hands, crowns, crystals, screws, bracelets, and wrist bands, since subsequent repairs and restoration may have changed the original components. Also, we cannot guarantee the authenticity or originality of any engraving or re-engraving on watch cases, case backs, bracelets, straps or internal movements. **£400-600**



Fine Jewellery, Watches & Silver, 17th Dec, 2025 09:30

375

Bueche Girod - A 9ct Gold Dress Watch

Year: Hallmarked 1976

Bezel: Smooth

Case Material: 9ct Yellow Gold

Case Diameter: Approximately 25mm x 25mm

Dial: Gold-Tone Floral Texture, Baton Hands

Numerals: Baton

Crown: Signed, Fluted

Movement: Bueche Girod (Peseux Calibre 7001) 17-Jewel

Manual Wind Movement, adjusted in five positions

Strap: After-Market Black Leather

Inner Circumference: Approximately 15.0cm at smallest,
18.5cm at widest

Buckle: After-Market Gold-Plated Buckle

Box: No

Papers: No

Gross Weight: Approximately 25.0 grams

No long-term tests have been performed and accuracy cannot be guaranteed. A full service is advised on all watches and pocket watches once purchased.

It is also important to note that we cannot guarantee the authenticity or originality of individual components, such as wheels, hands, crowns, crystals, screws, bracelets, and wrist bands, since subsequent repairs and restoration may have changed the original components. Also, we cannot guarantee the authenticity or originality of any engraving or re-engraving on watch cases, case backs, bracelets, straps or internal movements. **£300-500**



Fine Jewellery, Watches & Silver, 17th Dec, 2025 09:30

376

Bulova - An Accutron Wristwatch

Reference: 214

Serial: B87902

Bezel: Smooth, Gold-Filled

Year: circa 1970

Case Material: Stainless Steel, Gold-Filled Bezel

Case Diameter: Approximately 35mm

Dial: Silvered, Sunburst

Numerals: Roman, Minute Track

Crown: To Case Back

Movement: Quartz

Strap: After Market Brown Leather

Inner Circumference: Approximately 21.0cm at widest

Buckle: Gold-Plated Buckle

Box: No

Papers: No

Gross Weight: Approximately 39.5 grams

No long-term tests have been performed and accuracy cannot be guaranteed. A full service is advised on all watches and pocket watches once purchased.

It is also important to note that we cannot guarantee the authenticity or originality of individual components, such as wheels, hands, crowns, crystals, screws, bracelets, and wrist bands, since subsequent repairs and restoration may have changed the original components. Also, we cannot guarantee the authenticity or originality of any engraving or re-engraving on watch cases, case backs, bracelets, straps or internal movements. **£150-250**



Fine Jewellery, Watches & Silver, 17th Dec, 2025 09:30

377

Ebel - A Pair of 'His & Hers' 1911 Wristwatches

Reference: Gentleman's: 187902, Lady's: 188901

Serial: Gentleman's: 74638079, Lady's: 72629295

Bezel: Smooth, Bi-Metal, Screw Detail

Case Material: Stainless Steel

Case Diameter: Gentleman's: Approximately 32mm, Lady's: Approximately 24mm

Dial: Gentleman's: Cream, Lady's: Mother-of-Pearl

Numerals: Gold-Tone Roman Numerals, Minute Track

Crown: Fluted

Movement: 7-Jewel Quartz Movement

Complication: Date Aperture at three o'clock

Strap: Bi-Metal

Inner Circumference: Gentleman's: Approximately 16.0cm, Lady's: Approximately 15.0cm

Buckle: Signed, Stainless Steel Fold-Over Clasp

Box: Yes

Papers: No. 1911 Information Booklet Only.

Gross Weight: Gentleman's: Approximately 81.5 grams, Lady's: Approximately 48.0 grams.

No long-term tests have been performed and accuracy cannot be guaranteed. A full service is advised on all watches and pocket watches once purchased.

It is also important to note that we cannot guarantee the authenticity or originality of individual components, such as wheels, hands, crowns, crystals, screws, bracelets, and wrist bands, since subsequent repairs and restoration may have changed the original components. Also, we cannot guarantee the authenticity or originality of any engraving or re-engraving on watch cases, case backs, bracelets, straps or internal movements. **£350-550**



Fine Jewellery, Watches & Silver, 17th Dec, 2025 09:30

378

Longines - A Lady's Elegant Wristwatch

Reference: L4.309.5 (Case Back marked internally '9289/R592-595')

Serial: 47257063

Bezel: Diamond-Set

Case Material: Bi-Metal, Exhibition Case Back

Case Diameter: Approximately 25mm

Dial: Mother of Pearl, Pointed Baton Hands

Numerals: Diamond

Crown: Signed, Fluted

Movement: Longines L592.2 (ETA Calibre A20.L01) 22-Jewel Automatic Movement, marked 'XV37'

Complication: Date Aperture at three o'clock

Strap: Bi-Metal Brick-Link Strap

Inner Circumference: Approximately 16.0cm

Buckle: Signed, Stainless Steel Push-Button Double Fold-Over Clasp, marked 'L600140855 W' and 'GC200'

Box: No

Papers: No

Gross Weight: Approximately 58.5 grams

No long-term tests have been performed and accuracy cannot be guaranteed. A full service is advised on all watches and pocket watches once purchased.

It is also important to note that we cannot guarantee the authenticity or originality of individual components, such as wheels, hands, crowns, crystals, screws, bracelets, and wrist bands, since subsequent repairs and restoration may have changed the original components. Also, we cannot guarantee the authenticity or originality of any engraving or re-engraving on watch cases, case backs, bracelets, straps or internal movements. **£500-700**



Fine Jewellery, Watches & Silver, 17th Dec, 2025 09:30

379

Rolex - A Lady's Oyster Perpetual

Reference: 67180

Serial: 8420672

Year: Purchased 1991

Bezel: Smooth

Case Material: Stainless Steel

Case Diameter: Approximately 24mm

Dial: Black, Baton Hands

Numerals: Baton, Rolex Coronet at twelve o'clock, Minute Track

Crown: Rolex Twinlock

Movement: Automatic

Strap: Stainless Steel Oyster Strap, marked '566' and '78340'

Inner Circumference: Approximately 17.0cm

Buckle: Signed, Stainless Steel Fold-Over Clasp, marked '78340'

Box: Yes (Broken)

Papers: Yes. Guarantee Paper, Translation Leaflet and Date Chart Card Only.

Gross Weight: Approximately 50.5 grams

Please note this watch has not been opened. The movement has not been checked and therefore cannot be guaranteed.

No long-term tests have been performed and accuracy cannot be guaranteed. A full service is advised on all watches and pocket watches once purchased.

It is also important to note that we cannot guarantee the authenticity or originality of individual components, such as wheels, hands, crowns, crystals, screws, bracelets, and wrist bands, since subsequent repairs and restoration may have changed the original components. Also, we cannot guarantee the authenticity or originality of any engraving or re-engraving on watch cases, case backs, bracelets, straps or internal movements. **£1,000-1,500**



Fine Jewellery, Watches & Silver, 17th Dec, 2025 09:30

380

Jaeger-LeCoultre - A Geomatic Wristwatch

Reference: E399

Serial: 1858555 (To Movement)

Bezel: Smooth

Case Material: Stainless Steel (Case Back Detached)

Case Diameter: Approximately 36mm

Dial: Silvered, Sunburst, Pointed Baton Hands

Numerals: Baton, Minute Track

Crown: Signed, Fluted

Movement: Jaeger-LeCoultre Calibre K.881.623-Jewel Automatic Movement, numbered '1858555', Five Positions and Adjusted to Temperature

Complication: Date Aperture at three o'clock

Strap: After-Market Black Leather Strap

Inner Circumference: Approximately 17.5cm at smallest, 22.5cm at widest

Buckle: Signed, Stainless Steel Buckle

Box: No

Papers: No

Gross Weight: Approximately 47.0 grams

For your protection, every watch with an estimate over £1,500 is checked against the Watch Register. This is an independent company who hold the world's largest, most established, international database of lost, stolen, and fake watches, containing data compiled over 35 years - providing Dawsons' buyers with complete peace of mind.

No long-term tests have been performed and accuracy cannot be guaranteed. A full service is advised on all watches and pocket watches once purchased.

It is also important to note that we cannot guarantee the authenticity or originality of individual components, such as wheels, hands, crowns, crystals, screws, bracelets, and wrist bands, since subsequent repairs and restoration may have changed the original components. Also, we cannot guarantee the authenticity or originality of any engraving or re-engraving on watch cases, case backs, bracelets, straps or internal movements. **£2,000-2,500**



Fine Jewellery, Watches & Silver, 17th Dec, 2025 09:30

381

Jaeger-LeCoultre - A Master Hometime Wristwatch

Reference: 174.8.05.S

Serial: 2504185

Bezel: Smooth

Case Material: Stainless Steel

Case Diameter: Approximately 40mm

Dial: Silvered

Numerals: Baton, Arabic at nine o'clock, Minute Track

Crown: Signed, Fluted

Movement: Jaeger-LeCoultre Calibre 22C 29-Jewel Automatic Movement, numbered '975H'

Complication: Date Aperture at three o'clock, 24-Hour Subsidiary Dial at twelve o'clock, Seconds Subsidiary Dial at six o'clock

Strap: After-Market Brown Alligator Leather Strap

Inner Circumference: Approximately 19.0cm

Buckle: Signed, Stainless Steel Double Fold-Over Clasp

Box: Yes

Papers: Guarantee Certificate, Timepiece Registration Card and Master Hometime Booklet Only.

Gross Weight: Approximately 85.0 grams

Please Note: This lot contains a restricted species and therefore may be subject to additional shipping restrictions or regulations. Buyers are solely responsible for adhering to all regulations regarding the import/export of this lot prior to bidding. Buyers must obtain all necessary licences at their own expense. Inability to import/export this lot, or seizure by a government agency, does not justify delayed payment or cancellation of sale.

For your protection, every watch with an estimate over £1,500 is checked against the Watch Register. This is an independent company who hold the world's largest, most established, international database of lost, stolen, and fake watches, containing data compiled over 35 years - providing Dawsons' buyers with complete peace of mind.

No long-term tests have been performed and accuracy cannot be guaranteed. A full service is advised on all watches and pocket watches once purchased.

It is also important to note that we cannot guarantee the authenticity or originality of individual components, such as wheels, hands, crowns, crystals, screws, bracelets, and wrist bands, since subsequent repairs and restoration may have changed the original components. Also, we cannot guarantee the authenticity or originality of any engraving or re-engraving on watch cases, case backs, bracelets, straps or internal movements. **£2,000-3,000**



Fine Jewellery, Watches & Silver, 17th Dec, 2025 09:30

382

Cartier - An '18K' Tank Americaine Wristwatch

Reference: 1710

Serial: CC83060

Bezel: Smooth

Case Material: '18K'

Case Diameter: Approximately 18mm x 26mm

Dial: White, Signed at seven o'clock, Blued Sword Hands

Numerals: Black Roman Numerals, Minute Track

Crown: Blue Faceted

Movement: Cartier Calibre 157 Four-Jewel Movement

Strap: '18K' Five-Link Strap

Inner Circumference: Approximately 15.0cm

Buckle: Signed, '18K' Double Fold-Over Clasp

Box: Yes

Papers: No

Gross Weight: Approximately 78.0 grams

For your protection, every watch with an estimate over £1,500 is checked against the Watch Register. This is an independent company who hold the world's largest, most established, international database of lost, stolen, and fake watches, containing data compiled over 35 years - providing Dawsons' buyers with complete peace of mind.

No long-term tests have been performed and accuracy cannot be guaranteed. A full service is advised on all watches and pocket watches once purchased.

It is also important to note that we cannot guarantee the authenticity or originality of individual components, such as wheels, hands, crowns, crystals, screws, bracelets, and wrist bands, since subsequent repairs and restoration may have changed the original components. Also, we cannot guarantee the authenticity or originality of any engraving or re-engraving on watch cases, case backs, bracelets, straps or internal movements. **£6,000-8,000**



Fine Jewellery, Watches & Silver, 17th Dec, 2025 09:30

383 Patek Philippe - A Fine 18ct Yellow Gold Gondolo Wristwatch

Reference: 4824/1

Serial: 1969806/4068734

Year: Purchased 2000

Bezel: Smooth, Stepped

Case Material: 18ct Yellow Gold

Case Diameter: Approximately 22mm x 30mm

Dial: White, Black Leaf Hands

Numerals: Black Arabic Numerals, Minute Track

Crown: Signed, Fluted

Movement: Patek Philippe Calibre E.15 Six-Jewel Quartz

Movement, numbered '1969806'

Strap: Brick-Link Strap

Inner Circumference: Approximately 17.0cm

Buckle: Signed 18ct Yellow Gold Fold-Over Clasp

Box: Yes (Distressed)

Papers: Yes. Certificate of Origin, Movements Booklet and Distributors Booklet Only in Patek Philippe Pouch and Sleeve.

Gross Weight: Approximately 92.5 grams

The model name 'Gondolo' was termed as a result of a unique partnership between Patek Philippe and Rio de Janeiro retailer Gondolo & Labouriau during the early 1900s. Beginning with pocket watches, between 1902 and 1930, Patek Philippe produced a small, prestigious selection for Gondolo & Labouriau, termed the 'Chronometro Gondolo'. The Gondolo name was revived in 1993, inspired by the early 20th-century models.

For your protection, every watch with an estimate over £1,500 is checked against the Watch Register. This is an independent company who hold the world's largest, most established, international database of lost, stolen, and fake watches, containing data compiled over 35 years - providing Dawsons' buyers with complete peace of mind.

No long-term tests have been performed and accuracy cannot be guaranteed. A full service is advised on all watches and pocket watches once purchased.

It is also important to note that we cannot guarantee the authenticity or originality of individual components, such as wheels, hands, crowns, crystals, screws, bracelets, and wrist bands, since subsequent repairs and restoration may have changed the original components. Also, we cannot guarantee the authenticity or originality of any engraving or re-engraving on watch cases, case backs, bracelets, straps or internal movements. **£7,000-9,000**



Fine Jewellery, Watches & Silver, 17th Dec, 2025 09:30

384

Patek Philippe - An '18K' Calatrava Wristwatch

Reference: 2545 / 308091

Serial: 726383 (To Movement)

Bezel: Smooth

Case Material: '18K'

Case Diameter: Approximately 30mm

Dial: Silvered, Dauphine Hands

Numerals: Baton, Minute Track

Crown: Signed, Fluted

Movement: Patek Philippe Calibre 12-400 18-Jewel Manual Wind Movement, numbered '726383', adjusted to heat, cold isochronism and five positions.

Complication: Seconds Subsidiary Dial at six o'clock

Strap: After-Market Brick-Link Strap, surface testing as 18ct

Inner Circumference: Approximately 17.0cm at smallest, 18.0cm at widest

Buckle: After-Market Fold-Over Clasp, surface testing as 18ct

Box: No

Papers: No

Gross Weight: Approximately 94.0 grams

For your protection, every watch with an estimate over £1,500 is checked against the Watch Register. This is an independent company who hold the world's largest, most established, international database of lost, stolen, and fake watches, containing data compiled over 35 years - providing Dawsons' buyers with complete peace of mind.

No long-term tests have been performed and accuracy cannot be guaranteed. A full service is advised on all watches and pocket watches once purchased.

It is also important to note that we cannot guarantee the authenticity or originality of individual components, such as wheels, hands, crowns, crystals, screws, bracelets, and wrist bands, since subsequent repairs and restoration may have changed the original components. Also, we cannot guarantee the authenticity or originality of any engraving or re-engraving on watch cases, case backs, bracelets, straps or internal movements. **£4,000-6,000**



Fine Jewellery, Watches & Silver, 17th Dec, 2025 09:30

385 IWC - A B-UHR Pilot's Navigation Watch

Reference: FL23883

Serial: 1034044

Year: circa 1940s

Bezel: Smooth

Case Material: Stainless Steel

Case Diameter: Approximately 55mm

Dial: Black, Radium-filled Sword Hands

Numerals: Arabic, Minute Track

Crown: Fluted (Potential Replacement)

Movement: IWC, numbered '1014704'

Strap: Deficient

Gross Weight: Approximately 148.5 grams

For your protection, every watch with an estimate over £1,500 is checked against the Watch Register. This is an independent company who hold the world's largest, most established, international database of lost, stolen, and fake watches, containing data compiled over 35 years - providing Dawsons' buyers with complete peace of mind.

No long-term tests have been performed and accuracy cannot be guaranteed. A full service is advised on all watches and pocket watches once purchased.

It is also important to note that we cannot guarantee the authenticity or originality of individual components, such as wheels, hands, crowns, crystals, screws, bracelets, and wrist bands, since subsequent repairs and restoration may have changed the original components. Also, we cannot guarantee the authenticity or originality of any engraving or re-engraving on watch cases, case backs, bracelets, straps or internal movements. **£4,000-6,000**



Fine Jewellery, Watches & Silver, 17th Dec, 2025 09:30

386 **A Lange & Sohne, Glashütte - A Quarter Repeater Full Hunter Pocket Watch**

Serial: 59308 (To Movement)

Case Material: '585' (Case back marked internally with Swiss Squirrel Mark indicating 14ct Gold, in use between 1880 - 1934)

Case Diameter: Approximately 55mm

Dial: White Enamel, Fleur-de-Lys Hands

Numerals: Black, Arabic, Minute Track

Movement: Signed 'Glashütte', Keyless Wound Movement, numbered '59308'

Complication: Seconds subsidiary dial at six o'clock, Quarter Repeater Thumbpiece at six o'clock

Box: No

Papers: No

Gross Weight: Approximately 123.5 grams

No long-term tests have been performed and accuracy cannot be guaranteed. A full service is advised on all watches and pocket watches once purchased.

It is also important to note that we cannot guarantee the authenticity or originality of individual components, such as wheels, hands, crowns, crystals, screws, bracelets, and wrist bands, since subsequent repairs and restoration may have changed the original components. Also, we cannot guarantee the authenticity or originality of any engraving or re-engraving on watch cases, case backs, bracelets, straps or internal movements. **£1,500-2,500**



Fine Jewellery, Watches & Silver, 17th Dec, 2025 09:30

387 Tiffany & Co - A Rare and Fine Skeletonised Pocket Watch

Year: circa 1985

Serial: 3009 (To Movement)

Case Material: '750' (Stamped with Swiss Helvetia Head indicating 18ct) (Bow marked with 'W.W.' within a Lozenge Cartouche)

Case Diameter: Approximately 40mm

Dial: Skeletonised, Pointed Baton Hands

Crown: Cabochon-set

Movement: Tiffany & Co Keyless Gilt-Finished Jewelled pallet Lever Adjusted Movement, marked 'N.3009'. Visible between two crystals. The movement highly detailed with foliate engraving.

Box: No

Papers: No

Gross Weight: 29.0 grams

No long-term tests have been performed and accuracy cannot be guaranteed. A full service is advised on all watches and pocket watches once purchased.

We are unable to confirm mechanical replacements or imperfections to the movement, case, dial, pendulum, separate base(s) or dome.

Watches with water-resistant cases may have been opened to examine movements; no warranties are given regarding their water resistance.

It is also important to note that we cannot guarantee the authenticity or originality of individual components, such as wheels, hands, crowns, crystals, screws, bracelets, and wrist bands, since subsequent repairs and restoration may have changed the original components. Also, we cannot guarantee the authenticity or originality of any engraving or re-engraving on watch cases, case backs, bracelets, straps or internal movements. **£5,000-7,000**



Fine Jewellery, Watches & Silver, 17th Dec, 2025 09:30

- 388 **A 9ct Rose Gold 'Syren' (Record and Revue) Half-Hunter Pocket Watch**
Reference: 9573
Year: Hallmarked Chester 1920
Case Material: 9ct Rose Gold
Case Diameter: Approximately 50mm
Dial: White, Blued Poire Hands
Numerals: Black Roman Numerals, Minute Track
Movement: Keyless Lever Movement
Complication: Seconds Subsidiary Dial at six o'clock
Accompanied By: 9ct Rose Gold Curb-Link Albert Chain measuring 42cm in length, with vacant sporting fob, T Bar and Double Spring Clip.
Gross Weight: Pocket Watch: 97.8 grams, Chain, Fob & T Bar: 36.9 grams



No long-term tests have been performed and accuracy cannot be guaranteed. A full service is advised on all watches and pocket watches once purchased.

It is also important to note that we cannot guarantee the authenticity or originality of individual components, such as wheels, hands, crowns, crystals, screws, bracelets, and wrist bands, since subsequent repairs and restoration may have changed the original components. Also, we cannot guarantee the authenticity or originality of any engraving or re-engraving on watch cases, case backs, bracelets, straps or internal movements. **£1,500-2,500**

- 389 **A Lady's '18K' Full-Hunter Pocket Watch**
Serial: 32795
Case Material: '18K' Yellow Metal, Engraved with Foliate Design
Case Diameter: Approximately 34mm
Dial: Gold-Tone, Foliate Engraving to Centre, Hour Hand Deficient
Numerals: Black Roman Numerals, Minute Track
Movement: Key-Wound
Box: No
Papers: No



Gross Weight: 32.0 grams (Excluding Key)
No long-term tests have been performed and accuracy cannot be guaranteed. A full service is advised on all watches and pocket watches once purchased.

It is also important to note that we cannot guarantee the authenticity or originality of individual components, such as wheels, hands, crowns, crystals, screws, bracelets, and wrist bands, since subsequent repairs and restoration may have changed the original components. Also, we cannot guarantee the authenticity or originality of any engraving or re-engraving on watch cases, case backs, bracelets, straps or internal movements. **£400-600**

Fine Jewellery, Watches & Silver, 17th Dec, 2025 09:30

390 A 12ct Yellow Gold Half-Hunter Pocket Watch

Reference: 242211

Year: London Import Marks dated 1914

Case: Smooth, with Pink Guilloche Enamel Chapter Ring and Blue Enamel Roman Numerals

Case Material: 12ct Yellow Gold

Case Diameter: Approximately 30mm

Dial: White, Blued Poire Hands

Numerals: Black Roman Numerals, Minute Track

Movement: Keyless

Gross Weight: Approximately 24.0 grams

No long-term tests have been performed and accuracy cannot be guaranteed. A full service is advised on all watches and pocket watches once purchased.

It is also important to note that we cannot guarantee the authenticity or originality of individual components, such as wheels, hands, crowns, crystals, screws, bracelets, and wrist bands, since subsequent repairs and restoration may have changed the original components. Also, we cannot guarantee the authenticity or originality of any engraving or re-engraving on watch cases, case backs, bracelets, straps or internal movements. **£300-500**



391 Vertex for Asprey - A 9ct Gold Half-Hunter Pocket Watch

Reference: 6221

Serial: 696221

Year: 1947

Case Material: 9ct Yellow Gold (Enamel Roman numeral track on case front, engraved on cuvet with 'W.R. Plumridge, an appreciation of over 30 years service with the Fairey Aviation Co Ltd, Dec 22 1949')

Case Diameter: Approximately 50mm

Dial: White Enamel, Gilt Poire Hands

Numerals: Roman Numerals, Arabic on Seconds Subsidiary Dial

Crown: Fluted (with attached bow)

Movement: Vertex Swiss Made 15-Jewel Manual Wind Movement, marked '31'

Complication: Seconds Subsidiary Dial at six o'clock

Box: No

Papers: No

Gross Weight: 96.5 grams

No long-term tests have been performed and accuracy cannot be guaranteed. A full service is advised on all watches and pocket watches once purchased.

It is also important to note that we cannot guarantee the authenticity or originality of individual components, such as wheels, hands, crowns, crystals, screws, bracelets, and wrist bands, since subsequent repairs and restoration may have changed the original components. Also, we cannot guarantee the authenticity or originality of any engraving or re-engraving on watch cases, case backs, bracelets, straps or internal movements. **£600-800**



Fine Jewellery, Watches & Silver, 17th Dec, 2025 09:30

- 392 **Omega - An '18K' Open Face Pocket Watch**
Reference: 691.9105
Serial: 6227241
Year: circa 1925
Case Material: '18K' (Case Back marked internally with Swiss Helvetia Head stamp indicating 18ct)
Case Diameter: Approximately 46mm
Dial: Gold-Tone, Brushed, Blued Breguet Hands
Numerals: Blue Enamel Arabic Numerals, Minute Track
Movement: Omega Manual Wind Movement, numbered '6227241'
Complication: Seconds Subsidiary Dial at six o'clock
Box: No
Papers: No
Accompanied By: Hexagonal Snake Chain surface testing as base metal
Gross Weight: Pocket Watch approximately 52.5 grams, Chain approximately 11.0 grams
No long-term tests have been performed and accuracy cannot be guaranteed. A full service is advised on all watches and pocket watches once purchased.
It is also important to note that we cannot guarantee the authenticity or originality of individual components, such as wheels, hands, crowns, crystals, screws, bracelets, and wrist bands, since subsequent repairs and restoration may have changed the original components. Also, we cannot guarantee the authenticity or originality of any engraving or re-engraving on watch cases, case backs, bracelets, straps or internal movements. **£700-900**



- 393 **An Unusual Franco-Turkish Double-Sided Fob Watch**
Year: circa Late 19th Century
Case Material: Gilt Metal and Champlevé Enamel Detail
Case Diameter: Approximately 55mm
Dial: Gold-Tone with Floral Engraving to the centre; White with Gold-Tone Floral Detail
Numerals: Red Ottoman Numerals; Black Roman Numerals
Complication: Subsidiary Seconds Dial at six o'clock to one dial
Gross Weight: Approximately 150.0 grams
No long-term tests have been performed and accuracy cannot be guaranteed. A full service is advised on all watches and pocket watches once purchased.
It is also important to note that we cannot guarantee the authenticity or originality of individual components, such as wheels, hands, crowns, crystals, screws, bracelets, and wrist bands, since subsequent repairs and restoration may have changed the original components. Also, we cannot guarantee the authenticity or originality of any engraving or re-engraving on watch cases, case backs, bracelets, straps or internal movements. **£200-300**



Fine Jewellery, Watches & Silver, 17th Dec, 2025 09:30

- 394 Joseph Cheret. A pewter chamberstick, with figural mask carrying handle and oval-shaped dish, the nozzle supported by a cast cherub. 15.5cm high x 18cm wide. Signed and numbered; 'Joseph Cheret' and with a foundry mark 'Soleau Paris 1894.' **£300-500**



- 395 A George III silver baluster tankard, London 1768, probably by William Tuite, with later embossed flowering censer decoration, the leaf-capped handle supported on a similarly decorated spreading disk foot. housed in a tooled Morocco leather travel case. 10.6, 331.6 grams, 11.7 cm overall height. **£500-700**



- 396 A small group of silver, including a heavy silver Tastevin inset with a Commemorative silver coin after J. Mauger with a curly-headed bust of Louis XIV, the scroll handle with cast detail of a fleur-de-lis, the body decorated with a fox craning to reach a fruiting vine (Sour Grapes), probably 19th century, together with other small items of silver, 53.45 oz/1662.8 grams combined gross weight of silver **£400-600**



- 397 A small agglomeration of silver and gilt metal items, including a large George I-style bun pepper shaped sugar caster, London 1934 by Mappin & Webb, together with other silver items, including a clothes brush, table taper box, gilt metal and enamel "Harlequin" demitasse spoons, cigarette box, 12.37 oz, 384 grams combined gross weight of the taper box and caster **£200-300**



- 398 A pair of 20th-century (951) white metal hollow fighting cocks with engraved plumage, marked "951", 9 cm long, and a "Sterling" silver faced oval table mirror with embossed scrolls and wooden base, 19 cm long, 43.0 grams of weighable silver, just the fighting cocks. **£200-300**



Fine Jewellery, Watches & Silver, 17th Dec, 2025 09:30

- 399 A David Anderson of Norway white metal three-piece Christening set of knife, fork and spoon cast with fox, bear and rabbit, a pair of early 20th century cast silver appostle (St.James) spoons, a cased "Doric" fork and spoon set, and a Victorian cased silver three-piece Christening set. 6.70/ 210 grams combined weight of weighable silver, excluding the Anderson set and the loaded knife in the Christening set **£300-500**



- 400 A small agglomeration of silver items; including a Tiffany & Co. of New York, folding triptych photograph frame, 13 cm long open, two heavy silver cigarette cases and a silver presentation cigarette box bearing a plaque inscribed from TAC Wolde-Selassie and bearing a silver "Lion of Judah" boss to the interior.(5) 13.0 ozt/ 404 grams. **£200-300**



- 401 A set of four Swedish white metal punch cups designed by Karl Axel Karlsson; the slightly tapering hand hammered cups, with full Swedish silver marks for 1989 and Karlsson's maker's mark, 5cm high. Together with a set of six cocktail sticks, 1988, by the same maker. Gross weight 237grams, 7.6ozt **£200-300**



- 402 Two silver vinaigrettes; to include a cartouche-shaped vinaigrette, Birmingham 1843 by Nathaniel Mills, with hinged inner grille and engine turned exterior, 3.5 cm long, together with a probably Birmingham silver "Hunting Horn" vinaigrette by Levi & Salaman, 1.6 ozt, 50 grams combined. (2) **£200-300**



- 403 A silver-topped and ebonised undertakers' processional staff, Sheffield 2000, by Perry Glossop & Co, the pommel with engraved decoration the ebonised shaft terminating in a deep silver ferrule with brass saving tip. 125 cm long **£80-120**



Fine Jewellery, Watches & Silver, 17th Dec, 2025 09:30

- 404 An Ottoman/Albanian filigree white metal Kollan lady's belt with a tasselled bow-shaped clasp, each link shaped from individual filigree panels, probably late 19th century, see the example held in the collection of the British Museum for a comparative clasp, 96 cm long; together with items of gentlemen's accoutrements, including a Tiffany & Co. heavy silver shoe horn, a novelty "Eley 12 gauge hip flask, a single cigar sleeve for a large Montecristo sized cigar (18 cm long x 2.4 cm wide) a milk churn shaped pepper mill and a planished silver life boat. 29.45 oz/ 916.3 grams combined weight of weighable silver excluding pepper mill. **£300-500**
- 405 A small collection of silver items, including a pair of cast silver "Jacks" knife dogs, Sheffield 1907(?) by Walker and Hall, together with other small silver of similar vintage. 12.65 oz/ 393.7 grams collective gross weight of silver. **£200-300**



- 406 An 18th-century silver "Rat's Tail" mote spoon with long spiked slip, a smaller and slightly later example with a barbed slip and one other and two further spoons. 1.74 oz/ 54.6 grams combined gross weight of silver. **£200-300**



- 407 A pair of Victorian silver Corinthian column table candlesticks, with loaded bases, London 1873 by Hodd & Hodd, 16 cm overall height, together with a pair of Deakins silver tube epergnes (loaded bases), a heavy white metal double-ended gravy boat on oval tray (only the tray is marked as silver), 10.7 oz/ 332 grams, the weight of the base of the gravy boat alone as the other items are either loaded or unmarked. **£200-300**



- 408 A group of silver and white metal beakers, cups and goblets, including a heavy gauge modern beaker of plain form, 27.9 oz/ 869 grams combined weight of white metal and marked silver items. **£300-400**



Fine Jewellery, Watches & Silver, 17th Dec, 2025 09:30

- 409 A set of twelve "Mid Century Vintage" Danish white metal "Acornesque" demitasse spoons, by Grann & Laglye together with a matching caddy spoon by the same hands. Together with other mixed flatware. 11. ozt/ 346 grams combined gross weight of silver. **£250-350**



- 410 A collection of Indian (colonial style) silverware including an ebony handled tall cup, teapot, fruit bowl, ashtray, heavy gravy boat and a silver-plated spherical cream jug. 53.00 ozt/ 1651.5 grams weighable. **£600-800**



- 411 An early 20th century silver salver; circular with Chippendale border, on three scroll feet. Sheffield 1922 by Lee & Wigfull. 37cm diam. 36.5ozt. **£800-1,200**



- 412 A pair of George III silver Corinthian column table candlesticks, Sheffield 1777, possibly an early work of Thomas Watson & Co, with removable nozzles and pierced capitols on fluted shafts and concave neoclassical embossed bases with oval armorial boss (Loaded), 29 cm overall height. **£500-700**



- 413 An Irish 18th-century silver apostle spoon, Dublin 1758, by the prolific Irish spoonmaker Alexander Richards, the finial modelled as St. John the Evangelist holding a chalice, above a fig tending to an ovoid-shaped bowl. 2.15 ozt/ 66.9 grams, 204 mm long. **£600-800**



Fine Jewellery, Watches & Silver, 17th Dec, 2025 09:30

- 414 A George I Britannia standard silver loving cup and cover, London 1718, William Fawdrey bearing "Leopard's Erased" mark, the ogee moulded cover with tiered finial above a body of stiff cut card plantain leaves and lappets, and engraved with quartered armorial bearings, fitted with a pair of bold auricular leaf-capped handles, seated upon an ogee moulded domed foot. 41.7 ozt/1297.4 grams, 29 cm high.

William Fawdrey originated in Enstone(Nr Chipping Norton, Oxfordshire) from Yeoman stock. He later became a recognised and accepted master silversmith within the city of London. **£1,500-2,500**



- 415 A William IV four-piece silver tea service of compressed melon form, London 1836, maker JH DE not found, the set comprises two handled sugar, teapot, milk jug and hot water, chased with punched matted and sunflowers, raised on skirted bases with scroll feet. 85.37 ozt/ 2656.7 grams combined gross weight, 28 cm overall height of hot water pot. IVORY EXEMPTION

CERTIFICATE NUMBER: 7AXTXESP
(Qty: 4) **£2,000-3,000**



- 416 A George III silver tea urn and cover, London 1776, by William Holmes, in the manner of Robert Adams, with high-domed cover terminating in a heavy cast silver pineapple finial, the urn-shaped body engraved with the armorial bearings of Fletcher/Twemlow of Betley, and fitted with a pair of leafy vine upswept handles and beaded bands, above an ivory spigot tap, supported on a concave pedestal column and square base fitted four bun feet. 96.13 ozt/ 2990.2 grams, 49 cm overall height. IVORY EXEMPTION CERTIFICATE NUMBER:

F3U9TDBA

William Holmes was a very well-known and respected master silversmith, responsible for grand silver in the predominantly Neoclassical taste. His most notable commission may have been his well-documented and renowned dinner service for Holkham Hall (Norfolk), for Thomas William Coke in 1775.

£2,000-3,000



- 417 A matched part canteen of mostly "Fiddle Pattern" silver flatware, mixed makes and dates, comprising eight table (soup) spoons, eleven table forks, four dessert forks and other oddments of silver flatware, 70.73 ozt/ 2.2 kg combined gross weight of weighable silver. **£1,000-1,500**



Fine Jewellery, Watches & Silver, 17th Dec, 2025 09:30

- 418 A heavy-gauge silver three-piece teaset, London 1907 by Holland Aldwinckle & Slater of baluster form with rococo decoration and flame finials, 56.17 ozt /1747 grams/ combined gross weight. 27 cm wide the teapot. **£800-1,200**



- 419 An Edwardian pierced silver circular fruit basket, Sheffield 1909 by James Dixons & Sons, with cast and applied gadrooned rim above a pierced trellis band, supported on three shaped legs, 25.5 cm diameter, together with a die-stamped silver fruit stand on a spreading foot, 30.35 ozt/ 943.5 grams combined gross weight. **£300-500**



- 420 An early 20th century, lozenge form (800) white metal fruit bowl/dish, probably German C1900, with pierced and embossed rim, the sole with repoussé cherubs. 19.9 ozt/ 620 grams, 41.5 cm long x 28 cm wide. **£300-500**



- 421 A Silver Arts & Crafts pedestal quaich-style dish, two angled side handles, the stem with circular bosses and double beaded borders throughout. 31cm x 9cm. 474grams, 15.2ozt **£200-300**



- 422 A small collection of four 18th-century silver double-ended marrow spoons, London 1725 by Paul Hanet, 25.4 cm long, together with three similar marrow spoons of differing dates and makers, but all 18th century. 151.0 grams / 4.85ozt (4) Paul Hanet was one of the most prominent Huguenot spoon makers of the early 18th century. Although his working life appears to be relatively short, he made up for the time with his prolific output. He was born in 1677, but may have died in 1733, as no items post-dating this date have been recorded (At the point of publication) **£300-500**



Fine Jewellery, Watches & Silver, 17th Dec, 2025 09:30

- 423 A small agglomeration of silver boxes and trinkets, including a small heart-shaped panel in veneration of Saint Olga of Kiev, pill boxes, a cigarette box and other items. 17.5 ozt/ 546 grams, the combined gross weight of weighable silver **£150-200**



- 424 An agglomeration of small, mostly 20th-century and later silver pill/gift boxes, and a small votive panel decorated with the figure of The Holy Mother, a guillotine cigar cutter and other items. 15.25 ozt 474.5 grams **£150-200**



- 425 A group of silver items comprising a silver page turner handle (ivory blade, removed), matchstick holder, table-top cigar cutter, pierced silver string box, dome-topped Eastern betel leaf (?) box with pierced detail, telescopic "swizzle stick" and telescopic cocaine/snuff spoon, bronze desk seal with "M" matrix; and a set of silver-plated cocktail sticks in cocktail shaker holder. Total weighable 510.5 grams (16.41 ozt). **£300-500**



- 426 A German Art Deco (800) white metal three-piece "Etruscan" teaset, second quarter of the 20th century, of inverted urn form with raised silver gilt diamond bands, each fitted with high arched leaf-capped handles on beaded spreading disk feet. 29.25 ozt/910 grams combined weight, 23 cm height of the teapot. **£400-600**



- 427 Georg Jensen silver gilt and enamel spoon in a presentation case, a pair of Georg Jensen fiddle and thread spoon and fork and a cased sterling and guilloche enamel demitasse spoons (cased) 200 grams (6.43 ozt) combined gross weight. **£150-250**



Fine Jewellery, Watches & Silver, 17th Dec, 2025 09:30

- 428 A Georg Jensen 'Legacy' stainless steel segmental circular bowl with slightly inverted rim, bearing branding to the base. 10 cm diameter. **£150-250**



- 429 A Swedish silver candlestick, circular, hand hammered with slightly depressed centre and a cylindrical candle aperture. Fully marked with Swedish silver marks and Karlsson maker's mark. 9cm high x 12cm, 286.15 grams (9.2ozt). **£300-500**



- 430 Four Swedish silver dessert spoons designed by Einar Telander; with ovoid bowls and curved handles, hand hammered throughout. Full Swedish marks for 1988, maker's mark for Karl Axel Karlsson and facsimile signature for designer Einar Telander. 18cm length. 229g, 7.4ozt. **£200-300**



- 431 A three piece silver coffee set by Karl Karlsson; the set comprising a coffee pot, sugar basin and cream jug was designed by Einar Telander and made by Karlsson. Of hammered waisted cylindrical design, the wooden handles are anecdotally made from salvage from a ship wreck. Full Swedish marks, dated 1980, with Karlsson's maker's mark and a facsimile signature for Einar Telander. Coffee pot, 18cm high. Gross weight 1898.9 grams, 61 ozt



Accompanied by paperwork including a certificate of authenticity signed by Karlsson.
The following four lots were made by the uncle of the present owner. Swedish silversmith Karl-Axel Karlsson, who died in 2016 often worked with the silversmith and goldsmith Einar Telander who designed this teaset. Some of Telander's designs, executed by Karlsson are held in the National Museum of Stockholm. Karlsson also designed in his own right and is known for his designs for church silver, including candlesticks and a font. **£2,000-3,000**

Fine Jewellery, Watches & Silver, 17th Dec, 2025 09:30

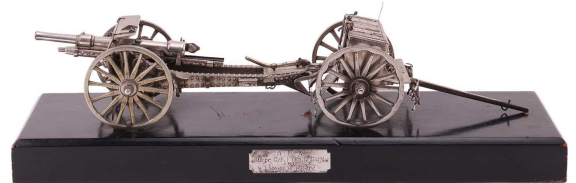
- 432 Georg Jensen - a Danish sterling silver Continental (Antik) pattern table service of flatware, circa 1940 to present, comprising; 12 table forks, 12 dessert forks, 12 table spoons, 12 dessert spoons, 12 teaspoons, 12 oyster forks, 12 coffee spoons, 6 pickle forks, a sauce ladle, a large serving spoon, a medium serving spoon, and a single serving spoon stamped .830 by Carl F. Hansen for George Jensen, 3753g weighable silver (121 ozt), together with the following with silver handles and steel blades; 12 table knives, 12 dessert knives, a cake slice, and a bottle opener; and a pair of salad servers by Georg Jensen and Wendel. Antik or Continental was the first silver flatware pattern designed by Georg Jensen in 1906. **£4,500-6,000**



- 433 A millennium silver rat tail canteen for six in a fitted mahogany and satinwood box; comprising three table spoons, six larger dessert spoons, six smaller dessert spoons, six table forks, six silver dessert forks, six silver teaspoons, six pairs of silver handled dessert eaters, silver silver handled pistol grip rable knives, and six silver handled dessert knives. London 2000 by A Haviland-Nye. Gross weight weighable 2079 grams, 66.6ozt. All in a late 18th century style mahogany box with satinwood banding. **£2,200-2,800**



- 434 Captain G.B. Clilverd (Graham Barry Clilverd, 1883-1978)
Of Military History Interest: An incredibly detailed and intricate silver-plated scale model of a **British, Royal Field Artillery, Mk IV 18pdr field gun and limber**, the gun with functioning recoil dampers and breech on a carriage constructed with many moving parts and hand-made and set rivetted construction, the limber containing removable shells and applied field tools, and tack, mounted on an ebonised plinth with inscribed plaque. 56 cm overall length.
This model and another by Captain G.B. Clilverd were mentioned in the obituary of this remarkable man; the details can be seen in the footnote section, a multi-disciplined artist renowned for his engravings, some of which found favour in the Royal households.
Obituary goes here



Captain G. B. Clilverd

When Graham Barry Clilverd died on the 21st of April, 1978, at the age of 95, he was the oldest recorded member of the original Inns of Court O.T.C. and he will be especially remembered by the present members of the Inns of Court & City Yeomanry as being the artist who designed the new buttons, cap badges and collar dogs when the Roughriders and the Inns of Court amalgamated.

Graham was a man of tremendous personality and had the great gift of being a contemporary of the person he was with whether the difference in ages was twenty or sixty years. Born with crippled feet, his legs were in irons till he was 15. He joined the Architects' Department of The Prudential at 17 but when war broke out in August, 1914, he tried every possible ruse to get into the army but was turned down at each recruiting station on account of his feet. Eventually he was in

Fine Jewellery, Watches & Silver, 17th Dec, 2025 09:30

10 Stone Buildings and a sympathetic M.O. – one Oxley – passed him and he was posted to B Sqn at Berkhamsted. In January 1915 he had a bad fall from his horse and was in hospital for several months. Discharged, he was commissioned in the Royal Field Artillery and posted to the Western Front. His amazing ability to draw came out during his stints at Bty O.P. officer. His panoramas were so exact and his ranges and perspectives so good that his C.O. took especial notice of them and in 1916 he sent Graham on a camouflage course. He was then in his element, taking the subject very seriously and was seconded to the Sappers as DIY Camouflage Officer. Being particularly adept at deception he would sketch a shell-torn tree in No Mans Land in exact detail, and then make a mock-up in steel plate and materials, insert a sniper's platform and he and his squad would substitute the phoney tree for the real at night. In November 1918 he was posted to the School of Camouflage in Hyde Park where he remained till demobbed in 1919. During this period he wrote the official army handbook on camouflage. One of his fellow officers was a Major Kleine, who suggested that Graham should try etching. With no lessons from anyone he started on zinc and then progressed to copper and his first hung in The Royal Academy in 1926. He returned to The Prudential and did his etchings and sketches in his spare time. He had a number of exhibitions in England and America but mostly sold his work through one gallery and was hung fairly regularly with the R.A. till 1948.

He was also extremely good with his hands and two of his best works were a scale model in silver of a galleon in full sail and a Mk IV 18 pdr field gun and limber also in silver. The work was so exact that the traversing and elevating gears worked as did the breech block and the silver shells fitted precisely.

In 1938 he was appointed Civilian Camouflage Adviser to the Civil Engineer-in-Chief at the Admiralty, being responsible for all shore establishments in Britain. He did not use aerial photographs but preferred to get himself flown over the V.P. while he made rapid sketches on a pad with marginal notes of colours and oddities and from these he would draw out an exact scale plan. He remained with the Admiralty till 1949 and during this time he made the model of the Moncell Fort which is now in the Imperial War Museum.

At the age of 66 he decided to try colour printing and again, with no tuition, he began to turn out some very fine work. Probably the most famous of these colour etchings is "Dawn Wind". The Queen Mother bought one copy and then bought the remaining three copies of the limited edition. He was also commissioned to sketch all the teaching hospitals in Britain, which took him a number of years. He continued to work till he was 83 when he had to move house and lost his studio. Even so he developed a talent for watercolours, mostly flower pieces. These he presented to his friends, refusing to sell them. **£800-1,200**

- 435 Captain G.B. Clilverd (Graham Barry Clilverd, 1883-1978)
Of Maritime Interest: an incredibly detailed and intricate silver (unmarked) and hard enamel scale model of a full-masted English Galeon of 1450-1500, fully rigged in hand-made silver



Buyers Premium 27.5% + VAT. Fully illustrated catalogue at dawsonsauctions.co.uk.

Fine Jewellery, Watches & Silver, 17th Dec, 2025 09:30

rigging to the billowing sails above a deck with canon and a further gun deck below, mounted upon its own dedicated ebonised oak stand bearing a silver plaque with title. 51 cm long, 48 cm high (the actual model)

This model and another by Captain G.B. Clilverd were mentioned in the obituary of this remarkable man; the details can be seen in the footnote section, a multi-disciplined artist renowned for his engravings, some of which found favour in the Royal households.

Obituary goes [here](#)



Captain G. B. Clilverd

When Graham Barry Clilverd died on the 21st of April, 1978, at the age of 95, he was the oldest recorded member of the original Inns of Court O.T.C. and he will be especially remembered by the present members of the Inns of Court & City Yeomanry as being the artist who designed the new buttons, cap badges and collar dogs when the Roughriders and the Inns of Court amalgamated.

Graham was a man of tremendous personality and had the great gift of being a contemporary of the person he was with whether the difference in ages was twenty or sixty years. Born with crippled feet, his legs were in irons till he was 15. He joined the Architects' Department of The Prudential at 17 but when war broke out in August, 1914, he tried every possible ruse to get into the army but was turned down at each recruiting station on account of his feet. Eventually he was in 10 Stone Buildings and a sympathetic M.O. – one Oxley – passed him and he was posted to B Sqn at Berkhamsted. In January 1915 he had a bad fall from his horse and was in hospital for several months. Discharged, he was commissioned in the Royal Field Artillery and posted to the Western Front. His amazing ability to draw came out during his stints at Bty O.P. officer. His panoramas were so exact and his ranges and perspectives so good that his C.O. took especial notice of them and in 1916 he sent Graham on a camouflage course. He was then in his element, taking the subject very seriously and was seconded to the Sappers as DIY Camouflage Officer. Being particularly adept at deception he would sketch a shell-torn tree in No Mans Land in exact detail, and then make a mock-up in steel plate and materials, insert a sniper's platform and he and his squad would substitute the phoney tree for the real at night. In November 1918 he was posted to the School of Camouflage in Hyde Park where he remained till demobbed in 1919. During this period he wrote the official army handbook on camouflage. One of his fellow officers was a Major Kleine, who suggested that Graham should try etching. With no lessons from anyone he started on zinc and then progressed to copper and his first hung in The Royal Academy in 1926. He returned to The Prudential and did his etchings and sketches in his spare time. He had a number of exhibitions in England and America but mostly sold his work through one gallery and was hung fairly regularly with the R.A. till 1948.

He was also extremely good with his hands and two of his best works were a scale model in silver of a galleon in full sail and a

Fine Jewellery, Watches & Silver, 17th Dec, 2025 09:30

Mk IV 18 pdr field gun and limber also in silver. The work was so exact that the traversing and elevating gears worked as did the breech block and the silver shells fitted precisely.

In 1938 he was appointed Civilian Camouflage Adviser to the Civil Engineer-in-Chief at the Admiralty, being responsible for all shore establishments in Britain. He did not use aerial photographs but preferred to get himself flown over the V.P. while he made rapid sketches on a pad with marginal notes of colours and oddities and from these he would draw out an exact scale plan. He remained with the Admiralty till 1949 and during this time he made the model of the Moncell Fort which is now in the Imperial War Museum.

At the age of 66 he decided to try colour printing and again, with no tuition, he began to turn out some very fine work. Probably the most famous of these colour etchings is "Dawn Wind". The Queen Mother bought one copy and then bought the remaining three copies of the limited edition. He was also commissioned to sketch all the teaching hospitals in Britain, which took him a number of years. He continued to work till he was 83 when he had to move house and lost his studio. Even so he developed a talent for watercolours, mostly flower pieces. These he presented to his friends, refusing to sell them. **£3,000-5,000**